



[Go to Product page](#)

Datasheet for ABIN6938840

ERBB3 Protein (AA 20-643) (Fc Tag)

2 Images

Overview

Quantity:	100 µg
Target:	ERBB3
Protein Characteristics:	AA 20-643
Origin:	Human
Source:	HEK-293 Cells
Protein Type:	Recombinant
Biological Activity:	Active
Purification tag / Conjugate:	This ERBB3 protein is labelled with Fc Tag.

Product Details

Purity:	>90 % as determined by SDS-PAGE.
Endotoxin Level:	Less than 0.1 EU per µg by the LAL method.

Target Details

Target:	ERBB3
Alternative Name:	ErbB3 (ERBB3 Products)
Background:	ErbB3, also known as Her3 (human epidermal growth factor receptor 3), is a member of the epidermal growth factor receptor (EGFR) family of receptor tyrosine kinases. This membrane-bound glycoprotein has a neuregulin binding domain but has not an active kinase domain. It therefore can bind the ligand but cannot mediate the intracellular signal transduction through protein phosphorylation. However, it does form heterodimers with ErbB2 or other EGFR

Target Details

members responsible for tyrosine phosphorylation to give a receptor complex and initiate the related pathway, which lead to cell proliferation or differentiation. Overexpression of this protein has been reported in numerous cancers, including prostate, bladder, and breast tumors. This protein has different isoforms derived from alternative splicing variants, and among which, the secreted isoform lacking the intermembrane region modulates the activity of membrane-bound form.

Molecular Weight: 95.5 kDa

NCBI Accession: [NP_001973](#)

Pathways: [RTK Signaling](#), [Fc-epsilon Receptor Signaling Pathway](#), [EGFR Signaling Pathway](#), [Neurotrophin Signaling Pathway](#)

Application Details

Restrictions: For Research Use only

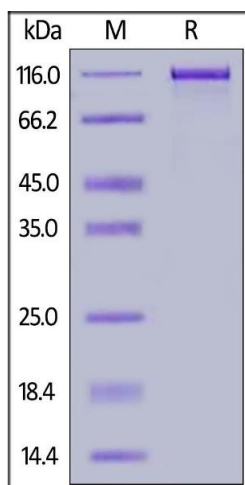
Handling

Format: Lyophilized

Buffer: Tris with Glycine, Arginine and NaCl, pH 7.5

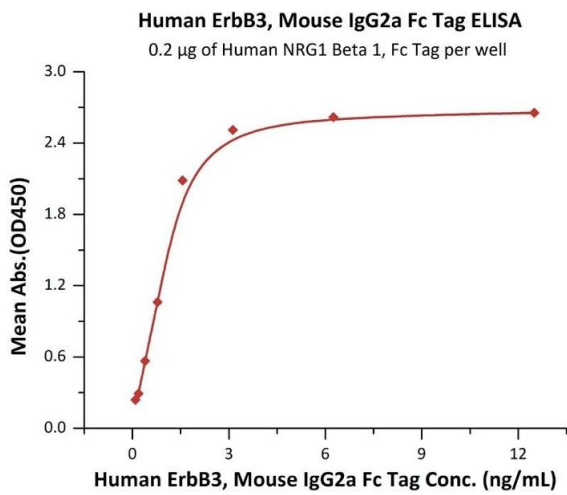
Storage: -20 °C

Images



SDS-PAGE

Image 1. Human ErbB3, Mouse IgG2a Fc Tag on under reducing (R) condition. The gel was stained overnight with Coomassie Blue. The purity of the protein is greater than 90 % .



ELISA

Image 2. Immobilized Human NRG1 Beta 1, Fc Tag (ABIN6973185) at 2 µg/mL (100 µL/well) can bind Human ErbB3, Mouse IgG2a Fc Tag (ABIN6933653, ABIN6938840) with a linear range of 0.1-2 ng/mL (QC tested).