

Datasheet for ABIN6938863
C5A Protein (AA 679-751) (Fc Tag)[Go to Product page](#)

2 Images

Overview

Quantity:	100 µg
Target:	C5A (C5a)
Protein Characteristics:	AA 679-751
Origin:	Human
Source:	HEK-293 Cells
Protein Type:	Recombinant
Biological Activity:	Active
Purification tag / Conjugate:	This C5A protein is labelled with Fc Tag.

Product Details

Purity:	>90 % as determined by SDS-PAGE.
Endotoxin Level:	Less than 1.0 EU per µg by the LAL method.

Target Details

Target:	C5A (C5a)
Alternative Name:	Complement Component C5a (C5a Products)
Background:	Complement Component C5a (C5a) is also known as C5, and is a protein fragment released from complement component C5, is a potent chemotactic factor for human peripheral blood neutrophils and monocytes, and is believed to play an important role in a number of inflammatory conditions. There are several functions in the below: C5a is an anaphylatoxin, causing the release of histamine from mast cells, C5a is effective leukocyte chemoattractants,

Target Details

causing the accumulation of white blood cells, especially neutrophil granulocytes, at sites of complement activation, C5a activates white blood cells by increasing avidity for white blood cell integrins and upregulating the Lipoxygenase pathway for arachidonic acid metabolism, C5a is a powerful inflammatory mediator, and seems to be a key factor in the development of pathology of many inflammatory diseases involving the complement system, C5a modulates balance between activating versus inhibitory IgG Fc receptors on leukocytes, thereby enhancing autoimmune response.

Molecular Weight:	34.6 kDa
NCBI Accession:	XP_015292262
Pathways:	Complement System , Carbohydrate Homeostasis

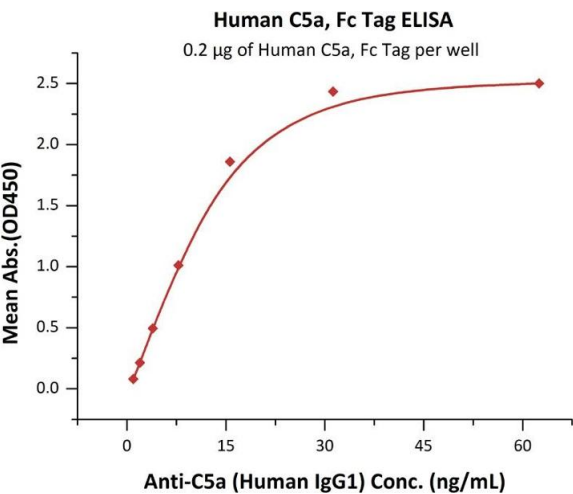
Application Details

Restrictions:	For Research Use only
---------------	-----------------------

Handling

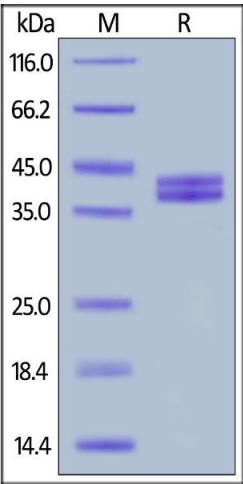
Format:	Lyophilized
Buffer:	Tris with Glycine, Arginine and NaCl, pH 7.5
Storage:	-20 °C

Images



ELISA

Image 1. Immobilized Human C5a, Fc Tag (ABIN6810055,ABIN6938863) at 2 µg/mL (100 µL/well) can bind Anti-C5a (Human IgG1) with a linear range of 2-16 ng/mL (QC tested).



SDS-PAGE

Image 2. Human C5a, Fc Tag on under reducing (R) condition. The gel was stained overnight with Coomassie Blue. The purity of the protein is greater than 90 % .