

Datasheet for ABIN6938866

SIGLEC8 Protein (AA 17-363) (His tag)



[Go to Product page](#)

1 Image

Overview

Quantity:	100 µg
Target:	SIGLEC8
Protein Characteristics:	AA 17-363
Origin:	Human
Source:	HEK-293 Cells
Protein Type:	Recombinant
Purification tag / Conjugate:	This SIGLEC8 protein is labelled with His tag.

Product Details

Purity:	>95 % as determined by SDS-PAGE.
Endotoxin Level:	Less than 1.0 EU per µg by the LAL method.

Target Details

Target:	SIGLEC8
Alternative Name:	Siglec-8 (SIGLEC8 Products)
Background:	Siglec-8 is also known as SIGLEC8, SAF2, SIGLEC-8, SIGLEC8L and sialic acid binding Ig like lectin 8. Siglec-8 was first identified by CD33 homology screening of ESTs from a cDNA library generated from a patient diagnosed with idiopathic hypereosinophilic syndrome and was originally termed SAF-2 (sialoadhesin family 2). At the tissue level, Siglec-8 mRNA was found to be most highly expressed in lung, PBMCs, spleen, and kidney. Two splice variants of Siglec-8 exist. The initially characterized form contains 431 amino acid residues in total, subsequently, a

Target Details

longer form of Siglec-8, initially termed Siglec-8L. Both forms of Siglec-8 are found in eosinophils and contain a V-set domain with lectin activity and two C2-type Ig repeat domains in the extracellular region.

Molecular Weight: 39.7 kDa

NCBI Accession: [NP_002072](#)

Application Details

Restrictions: For Research Use only

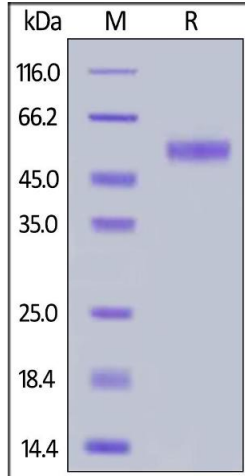
Handling

Format: Lyophilized

Buffer: PBS with Arginine, pH 7.4

Storage: -20 °C

Images



SDS-PAGE

Image 1. Human Siglec-8, His Tag on under reducing (R) condition. The gel was stained overnight with Coomassie Blue. The purity of the protein is greater than 95 % .