

Datasheet for ABIN6938869

GPC1 Protein (AA 24-529) (His tag)[Go to Product page](#)**2** Images

Overview

Quantity:	100 µg
Target:	GPC1
Protein Characteristics:	AA 24-529
Origin:	Mouse
Source:	HEK-293 Cells
Protein Type:	Recombinant
Biological Activity:	Active
Purification tag / Conjugate:	This GPC1 protein is labelled with His tag.

Product Details

Purity:	>90 % as determined by SDS-PAGE.
Endotoxin Level:	Less than 1.0 EU per µg by the LAL method.

Target Details

Target:	GPC1
Alternative Name:	Glypican 1 (GPC1 Products)
Background:	Glypican 1 has been shown to interact with SLIT2. This protein is involved in the misfolding of normal prion proteins in the cell membrane to the infectious prion form. Cell surface heparan sulfate proteoglycans are composed of a membrane-associated protein core substituted with a variable number of heparan sulfate chains. Members of the glypican-related integral membrane proteoglycan family (GRIPS) contain a core protein anchored to the cytoplasmic membrane via

Target Details

	a glycosyl phosphatidylinositol linkage. These proteins may play a role in the control of cell division and growth regulation.
Molecular Weight:	57.5 kDa
NCBI Accession:	NP_057905
Pathways:	Glycosaminoglycan Metabolic Process , Regulation of Muscle Cell Differentiation

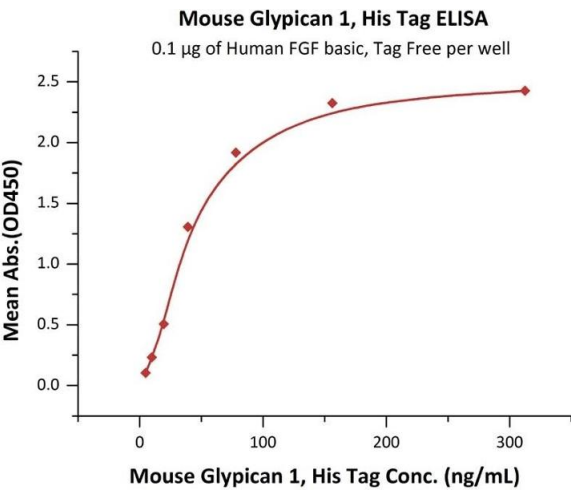
Application Details

Restrictions:	For Research Use only
---------------	-----------------------

Handling

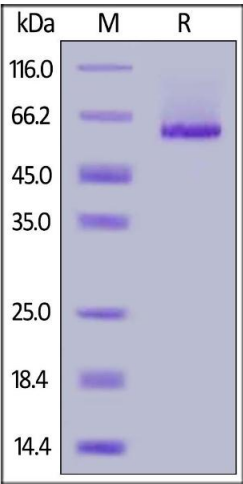
Format:	Lyophilized
Buffer:	50 mM Tris, 150 mM NaCl, pH 7.5
Storage:	-20 °C

Images



ELISA

Image 1. Immobilized Human FGF basic, Tag Free (ABIN2444057,ABIN2180650,ABIN2180649) at 1 µg/mL (100 µL/well) can bind Mouse Glypican 1, His Tag (ABIN6923156,ABIN6938869) with a linear range of 5-78 ng/mL (QC tested).



SDS-PAGE

Image 2. Mouse Glypican 1, His Tag on under reducing (R) condition. The gel was stained overnight with Coomassie Blue. The purity of the protein is greater than 90 % .