

Datasheet for ABIN6938871

GPC2 Protein (AA 22-556) (His tag)[Go to Product page](#)**2** Images

Overview

Quantity:	100 µg
Target:	GPC2
Protein Characteristics:	AA 22-556
Origin:	Mouse
Source:	HEK-293 Cells
Protein Type:	Recombinant
Biological Activity:	Active
Purification tag / Conjugate:	This GPC2 protein is labelled with His tag.

Product Details

Sequence:	AA 22-556
Purity:	>90 % as determined by SDS-PAGE.
Endotoxin Level:	Less than 1.0 EU per µg by the LAL method.

Target Details

Target:	GPC2
Alternative Name:	Glypican 2 (GPC2 Products)
Background:	<p>Glypican 2 (GPC2), also known cerebroglycan, is a glycosphosphatidylinositol-linked integral membrane heparan sulfate proteoglycan found in the developing nervous system.</p> <p>Cerebroglycan participates in cell adhesion and is thought to regulate the growth and guidance of axons. Cerebroglycan has especially high affinity for laminin-1. GPC2 silencing inactivates</p>

Target Details

Wnt/ β -catenin signaling and reduces the expression of N-Myc, an oncogenic driver of neuroblastoma tumorigenesis. Immunotoxins and chimeric antigen receptor (CAR) T cells targeting GPC2 inhibit neuroblastoma growth in mouse models. A GPC3 specific antibody drug conjugate (ADC) can also inhibit neuroblastoma cell proliferation.

Molecular Weight: 60.6 kDa

NCBI Accession: [NP_766000](#)

Pathways: [Glycosaminoglycan Metabolic Process](#)

Application Details

Restrictions: For Research Use only

Handling

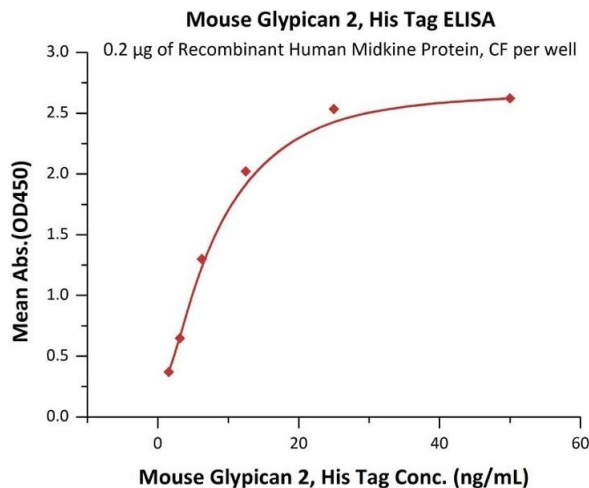
Format: Lyophilized

Buffer: PBS, pH 7.4

Handling Advice: Please avoid repeated freeze-thaw cycles.

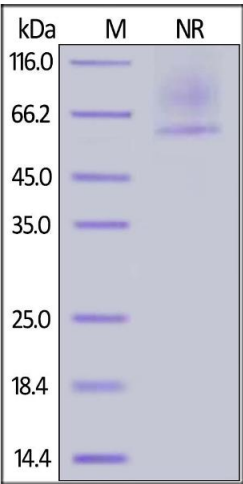
Storage: -20 °C

Images



ELISA

Image 1. Immobilized Recombinant Human Midkine Protein, CF at 2 μ g/mL (100 μ L/well) can bind Mouse Glypican 2, His Tag (ABIN6933642, ABIN6938871) with a linear range of 2-13 ng/mL (QC tested).



SDS-PAGE

Image 2. Mouse Glypican 2, His Tag on under ing (NR) condition. The gel was stained overnight with Coomassie Blue. The purity of the protein is greater than 90 % .