



[Go to Product page](#)

Datasheet for ABIN6939017
anti-Occludin antibody (AA 282-415)

4 Images

Overview

Quantity:	100 µg
Target:	Occludin (OCLN)
Binding Specificity:	AA 282-415
Reactivity:	Human
Host:	Mouse
Clonality:	Monoclonal
Application:	Western Blotting (WB), Immunohistochemistry (Formalin-fixed Sections) (IHC (f))

Product Details

Immunogen:	Recombinant fragment of human Occludin protein (around aa 282-415) (exact sequence is proprietary)
Clone:	OCLN-2181
Isotype:	IgG1
Specificity:	Occludin is a tetraspan integral membrane protein in epithelial and endothelial tight junction (TJ) structures that can contain two extracellular loops. The protein exists in a variety of phosphorylated forms. Phosphorylation is involved in regulating both the localization and the function of Occludin. Expression of Occludin is upregulated by polyunsaturated fatty acids, increasing trans-endothelial cell resistance and reducing cellular permeability to large molecules. The level of Occludin varies greatly depending on tissue, in brain tissue, Occludin is highly expressed at cell-cell contact sites. Non-neural tissues show lower expression and discontinuous distribution. Occludin is a tight junction protein that is a key structural component of the blood-brain barrier (BBB). Degradation of Occludin is frequently seen in

Product Details

ischemic stroke and contributes to BBB disruption.

Cross-Reactivity (Details): Human,

Purification: 200ug/ml of Ab Purified from Bioreactor Concentrate by Protein A/G.

Target Details

Target: Occludin (OCLN)

Alternative Name: OCLN ([OCLN Products](#))

Background: BLCPMG, Occludin, OCLN, Phosphatase 1 regulatory subunit 115, PTORCH1, Tight junction protein occludin, Occludin (Marker of Early Blood Brain Barrier Damage)
Cellular localisation: Cell Surface and Cytoplasmic

Molecular Weight: 60-82kDa

Gene ID: 100506658, 592605

UniProt: [Q16625](#)

Pathways: [Cell-Cell Junction Organization](#), [Hepatitis C](#)

Application Details

Application Notes: Positive Control: HepG2 cells. Kidney.
Known Application: Western Blot (1-2 µg/mL), Immunohistochemistry (Formalin-fixed) (1-2 µg/mL for 30 minutes at RT)(Staining of formalin-fixed tissues requires heating tissue sections in 10 mM Tris with 1 mM EDTA, pH 9.0, for 45 min at 95°C followed by cooling at RT for 20 minutes), Optimal dilution for a specific application should be determined.

Restrictions: For Research Use only

Handling

Concentration: 200 µg/mL

Buffer: Prepared in 10 mM PBS with 0.05 % BSA and 0.05 % azide.

Preservative: Sodium azide

Precaution of Use: This product contains Sodium azide: a POISONOUS AND HAZARDOUS SUBSTANCE which should be handled by trained staff only.

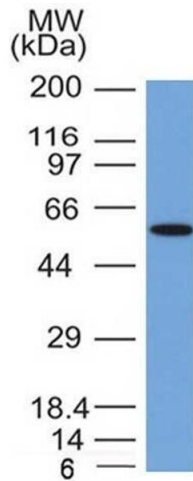
Storage: 4 °C, -80 °C

Handling

Storage Comment: Antibody with azide - store at 2 to 8 °C. Antibody is stable for 24 months. Non-hazardous. Also available WITHOUT BSA & azide at 1.0mg/ml.

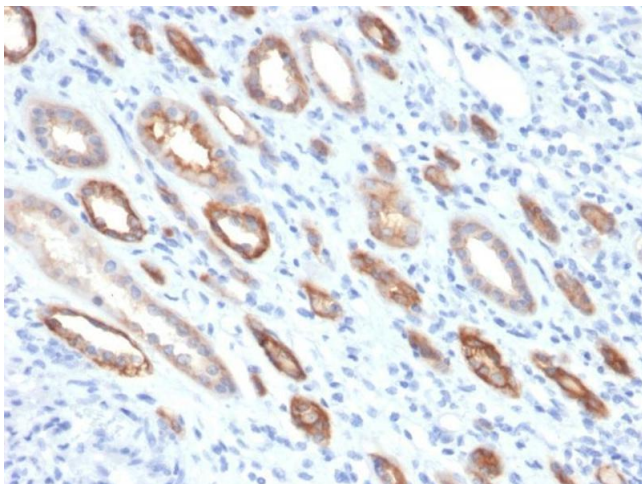
Expiry Date: 24 months

Images



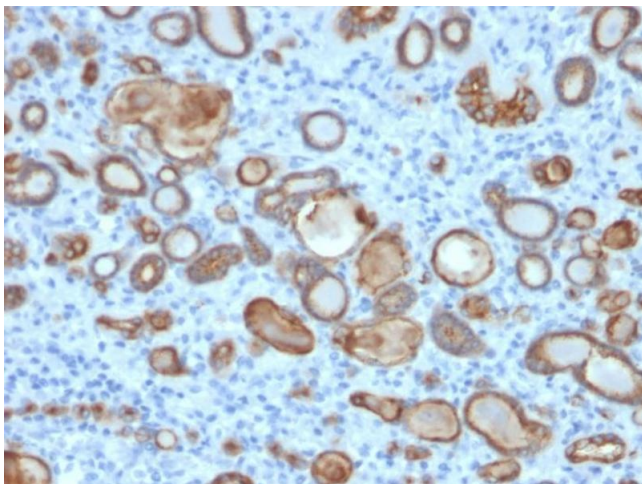
Western Blotting

Image 1. Western Blot Analysis of MCF-7 cell lysate with Occludin Mouse Monoclonal Antibody (OCLN/2181).



Immunohistochemistry

Image 2. Formalin-fixed, paraffin-embedded human Renal Cell Carcinoma stained with Occludin Mouse Monoclonal Antibody (OCLN/2181).



Immunohistochemistry

Image 3. Formalin-fixed, paraffin-embedded human thyroid carcinoma stained with Occludin Mouse Monoclonal Antibody (OCLN/2181).

Please check the [product details page](#) for more images. Overall 4 images are available for ABIN6939017.