

Datasheet for ABIN6939019
anti-Cadherin-16 antibody

8 Images

[Go to Product page](#)

Overview

Quantity:	100 µg
Target:	Cadherin-16 (CDH16)
Reactivity:	Human
Host:	Mouse
Clonality:	Monoclonal
Conjugate:	This Cadherin-16 antibody is un-conjugated
Application:	Western Blotting (WB), Flow Cytometry (FACS), ELISA, Immunohistochemistry (Formalin-fixed Sections) (IHC (f)), Coating (Coat)

Product Details

Immunogen:	Recombinant full-length human CDH16 protein
Clone:	CDH16-1071
Isotype:	IgG1
Specificity:	<p>This MAb recognizes a protein of 130 kDa, identified as Ksp-cadherin. Cadherins form a superfamily of related glycoproteins that mediate calcium-dependent cell adhesion and transmit signals from the extracellular matrix to the cytoplasm. Cadherins have been implicated in embryogenesis, tissue morphogenesis, tissue structure maintenance, cell polarization, neoplastic invasiveness and metastasis, and membrane transport. It is suggested that Ksp-cadherin is a marker for terminal differentiation of the basolateral membranes of renal tubular epithelial cells. Within the kidney, Ksp-Cadherin is found exclusively in the basolateral membrane of renal tubular epithelial cells and collecting duct cells, and not in glomeruli, renal interstitial cells, or blood vessels. Ksp-Cadherin has been suggested to distinguish</p>

Product Details

Chromophobe Renal-Cell Carcinoma from Oncocytoma.

Cross-Reactivity (Details): Human, Mouse, Rat, Rabbit, Dog,

Purification: 200ug/ml of Ab Purified from Bioreactor Concentrate by Protein A/G.

Target Details

Target: Cadherin-16 (CDH16)

Alternative Name: CDH16 ([CDH16 Products](#))

Background: Cadherin-16 (CDH16), Kidney-specific cadherin, Ksp-cadherin antibody, Ksp-Cadherin (Kidney-Specific Cadherin) / CDH16
Cellular localisation: Cell Surface. Some cytoplasmic.

Molecular Weight: 130kDa

Gene ID: 1014, 513660

UniProt: [O75309](#)

Application Details

Application Notes: Positive Control: HEK293 cells. Kidney tissue lysate. Normal kidney or renal cell carcinoma.
Known Application: ELISA (Use Ab at 2-4 µg/mL for coating) (Order Ab without BSA), Flow Cytometry (1-2 µg/million cells), Western Blot (1-2 µg/mL), Immunohistochemistry (Formalin-fixed) (1-2 µg/mL for 30 minutes at RT) (Staining of formalin-fixed tissues requires heating tissue sections in 10 mM Tris with 1 mM EDTA, pH 9.0, for 45 min at 95°C followed by cooling at RT for 20 minutes), Optimal dilution for a specific application should be determined.

Restrictions: For Research Use only

Handling

Concentration: 200 µg/mL

Buffer: Prepared in 10 mM PBS with 0.05 % BSA and 0.05 % azide.

Preservative: Sodium azide

Precaution of Use: This product contains Sodium azide: a POISONOUS AND HAZARDOUS SUBSTANCE which should be handled by trained staff only.

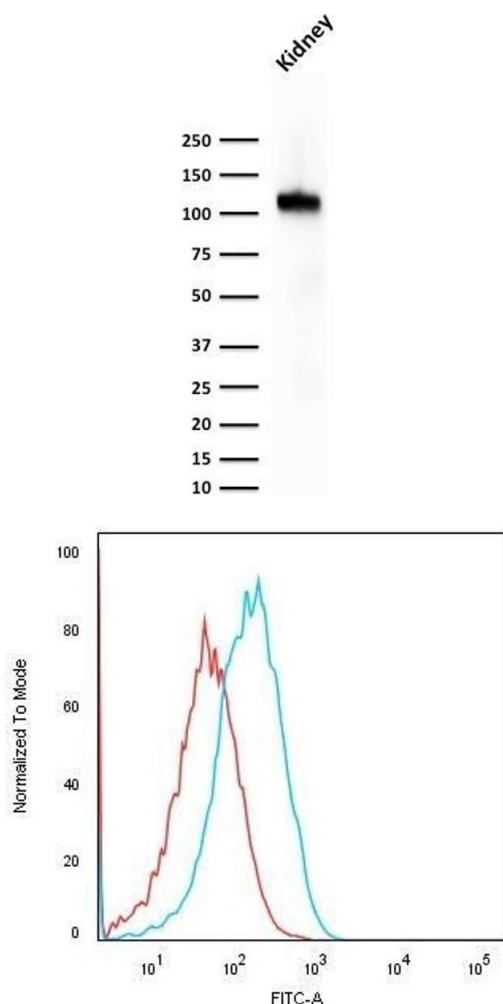
Storage: 4 °C, -80 °C

Handling

Storage Comment: Antibody with azide - store at 2 to 8 °C. Antibody is stable for 24 months. Non-hazardous. Also available WITHOUT BSA & azide at 1.0mg/ml.

Expiry Date: 24 months

Images

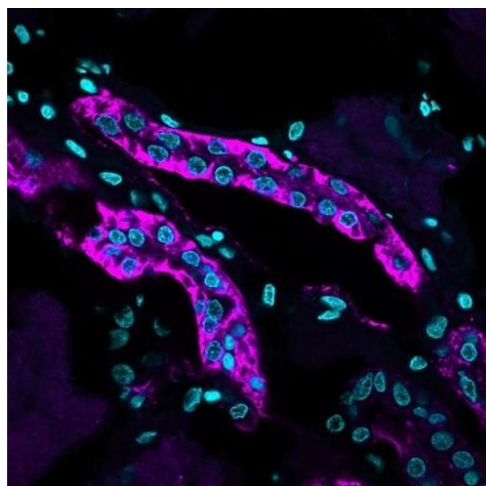


Western Blotting

Image 1. Western Blot Analysis of human kidney tissue lysate using KSP-Cadherin Mouse Monoclonal Antibody (CDH16/1071).

Flow Cytometry

Image 2. Flow Cytometric Analysis of human HEK293 cells using KSP-Cadherin Mouse Monoclonal Antibody (CDH16/1071) followed by Goat anti-Mouse IgG-CF488 (Blue); Isotype Control (Red).



Immunohistochemistry

Image 3. Formalin-fixed, paraffin-embedded human Kidney stained with KSP-Cadherin Mouse Monoclonal Antibody (CDH16/1071) followed by Goat anti-Mouse IgG-CF640R (Purple)

Please check the [product details page](#) for more images. Overall 8 images are available for ABIN6939019.