



[Go to Product page](#)

Datasheet for ABIN6939032

## anti-Mesothelin antibody (AA 273-407)

### 7 Images

#### Overview

Quantity:	100 µg
Target:	Mesothelin (MSLN)
Binding Specificity:	AA 273-407
Reactivity:	Human
Host:	Mouse
Clonality:	Monoclonal
Conjugate:	This Mesothelin antibody is un-conjugated
Application:	Immunohistochemistry (Formalin-fixed Sections) (IHC (f))

#### Product Details

Immunogen:	Recombinant fragment (around aa 273-407) of human Mesothelin (MSLN) protein (exact sequence is proprietary)
Clone:	MSLN-2131
Isotype:	IgG2b
Specificity:	Mesothelin is a 40 kDa glycosyl-phosphatidylinositol-anchored glycoprotein cleaved from a 69 kDa precursor protein. Mesothelin immunoreactivity is high in cancers of the ovary (serous papillary, endometrioid and undifferentiated) and pancreas, with less frequent staining seen in adenocarcinomas of the endometrium, lung and stomach/esophagus. Mesothelin is one of the most sensitive markers for mesothelioma.
Cross-Reactivity (Details):	Human, Mouse, Rat,
Purification:	200ug/ml of Ab Purified from Bioreactor Concentrate by Protein A/G.

## Target Details

---

Target:	Mesothelin (MSLN)
Alternative Name:	MSLN ( <a href="#">MSLN Products</a> )
Background:	CAK1, Megakaryocyte potentiating factor, Mesothelin, MSLN, SMR, SMRP, Mesothelin (Mesothelial Marker) Cellular localisation: Cell Surface and Secreted
Molecular Weight:	40kDa (Mature form), 69kDa (Precursor)
Gene ID:	10232, 408488
UniProt:	<a href="#">Q13421</a>
Pathways:	<a href="#">EGFR Signaling Pathway</a> , <a href="#">Positive Regulation of Peptide Hormone Secretion</a> , <a href="#">Intracellular Steroid Hormone Receptor Signaling Pathway</a> , <a href="#">Steroid Hormone Mediated Signaling Pathway</a> , <a href="#">Carbohydrate Homeostasis</a> , <a href="#">cAMP Metabolic Process</a> , <a href="#">Regulation of G-Protein Coupled Receptor Protein Signaling</a> , <a href="#">Positive Regulation of Endopeptidase Activity</a> , <a href="#">Regulation of Carbohydrate Metabolic Process</a>

## Application Details

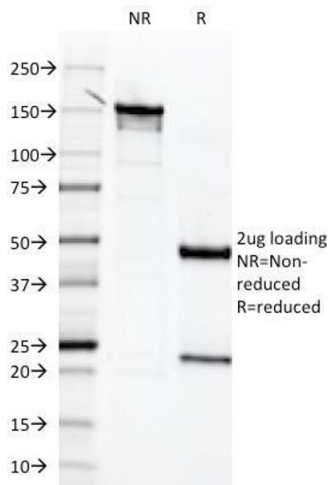
---

Application Notes:	Positive Control: CAPAN-2 or HeLa cells. Lung Mesothelioma. Known Application: Immunohistochemistry (Formalin-fixed) (1-2 µg/mL for 30 minutes at RT),(Staining of formalin-fixed tissues requires heating tissue sections in 10 mM Tris with 1 mM EDTA, pH 9.0, for 45 min at 95&degC followed by cooling at RT for 20 minutes), Optimal dilution for a specific application should be determined.
Restrictions:	For Research Use only

## Handling

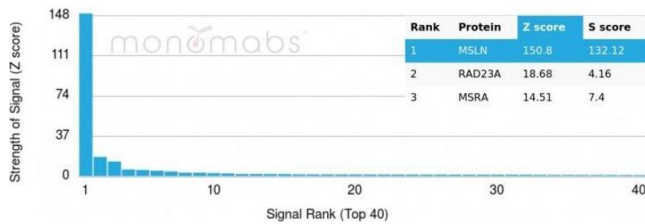
---

Concentration:	200 µg/mL
Buffer:	Prepared in 10 mM PBS with 0.05 % BSA and 0.05 % azide.
Preservative:	Sodium azide
Precaution of Use:	This product contains Sodium azide: a POISONOUS AND HAZARDOUS SUBSTANCE which should be handled by trained staff only.
Storage:	4 °C,-80 °C
Storage Comment:	Antibody with azide - store at 2 to 8 °C. Antibody is stable for 24 months. Non-hazardous. Also available WITHOUT BSA & azide at 1.0mg/ml.



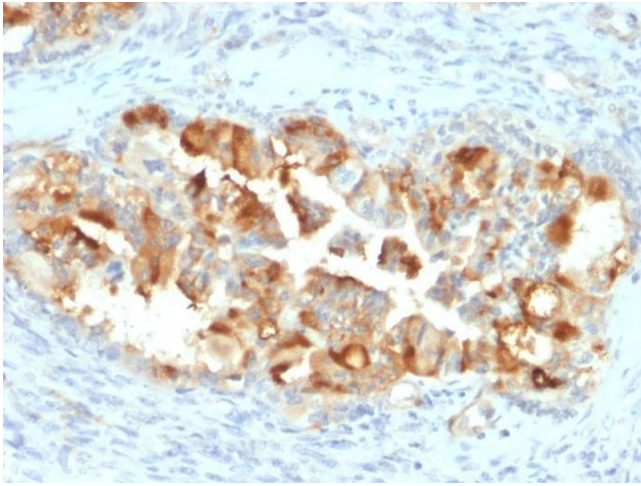
### SDS-PAGE

**Image 1.** SDS-PAGE Analysis Purified Mesothelin Mouse Monoclonal Antibody (MSLN/2131). Confirmation of Integrity and Purity of the Antibody.



### Protein Array

**Image 2.** Analysis of Protein Array containing more than 19,000 full-length human proteins using Mesothelin Mouse Monoclonal Antibody (MSLN/2131). Z- and S- Score: The Z-score represents the strength of a signal that a monoclonal antibody (MAb) (in combination with a fluorescently-tagged anti-IgG secondary antibody) produces when binding to a particular protein on the HuProt™ array. Z-scores are described in units of standard deviations (SDs) above the mean value of all signals generated on that array. If targets on HuProt™ are arranged in descending order of the Z-score, the S-score is the difference (also in units of SDs) between the Z-score. S-score therefore represents the relative target specificity of a MAb to its intended target. A MAb is considered to specific to its intended target, if the MAb has an S-score of at least 2.5. For example, if a MAb binds to protein X with a Z-score of 43 and to protein Y with a Z-score of 14, then the S-score for the binding of that MAb to protein X is equal to 29.



### Immunohistochemistry

**Image 3.** Formalin-fixed, paraffin-embedded human Endometrial Carcinoma stained with Mesothelin Mouse Monoclonal Antibody (MSLN/2131).

Please check the [product details page](#) for more images. Overall 7 images are available for ABIN6939032.