

Datasheet for ABIN6939078  
**anti-CEACAM5 antibody**

## 2 Images

[Go to Product page](#)

## Overview

Quantity:	100 µg
Target:	CEACAM5
Reactivity:	Human
Host:	Mouse
Clonality:	Monoclonal
Conjugate:	This CEACAM5 antibody is un-conjugated
Application:	Flow Cytometry (FACS), Immunofluorescence (IF), Immunohistochemistry (Formalin-fixed Sections) (IHC (f))

## Product Details

Immunogen:	Human CEA protein
Clone:	Cocktail
Isotype:	IgG
Specificity:	<p>This antibody recognizes proteins of 80-200 kDa, identified as different members of CEA family. CEA is synthesized during development in the fetal gut and is re-expressed in increased amounts in intestinal carcinomas and several other tumors. This MAb does not react with nonspecific cross-reacting antigen (NCA) and with human polymorphonuclear leucocytes. It shows no reaction with a variety of normal tissues and is suitable for staining of formalin/paraffin tissues. CEA is not found in benign glands, stroma, or malignant prostatic cells. Antibody to CEA is useful in detecting early foci of gastric carcinoma and in distinguishing pulmonary adenocarcinomas (60-70 % are CEA+) from pleural mesotheliomas (rarely or weakly CEA+). Anti-CEA positivity is seen in adenocarcinomas from the lung, colon, stomach,</p>

## Product Details

esophagus, pancreas, gallbladder, urachus, salivary gland, ovary, and endocervix.

Cross-Reactivity (Details): Human,

Purification: 200ug/ml of Ab purified from Bioreactor Concentrate by Protein A/G.

## Target Details

Target: CEACAM5

Alternative Name: CEACAM5 ([CEACAM5 Products](#))

Background: Carcinoembryonic Antigen-related Cell Adhesion Molecule 5, CEACAM5, CD66, Biliary Glycoprotein (BGP-1), Carcinoembryonic Antigen, pan (CEA)  
Cellular localisation: Cytoplasmic and luminal surface

Molecular Weight: 80-200kDa

Gene ID: 1048, 709196

UniProt: [P06731](#)

## Application Details

Application Notes: Positive Control: MCF7 or 293T cells. Human colon carcinoma.  
Known Application: Flow Cytometry (0.5-1 µg/million cells), Immunofluorescence (0.5-1 µg/mL), Immunohistochemistry (Formalin-fixed) (1-2 µg/mL for 30 minutes at RT), (Staining of formalin-fixed tissues requires heating tissue sections in 10 mM Tris with 1 mM EDTA, pH 9.0, for 45 min at 95 °C followed by cooling at RT for 20 minutes), Optimal dilution for a specific application should be determined.

Restrictions: For Research Use only

## Handling

Concentration: 200 µg/mL

Buffer: Prepared in 10 mM PBS with 0.05 % BSA and 0.05 % azide.

Preservative: Sodium azide

Precaution of Use: This product contains Sodium azide: a POISONOUS AND HAZARDOUS SUBSTANCE which should be handled by trained staff only.

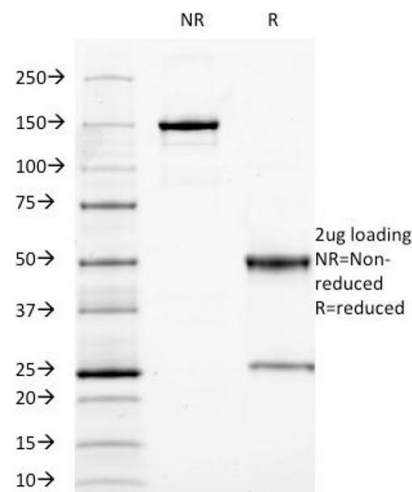
Storage: 4 °C, -80 °C

Handling

Storage Comment: Antibody with azide - store at 2 to 8 °C. Antibody is stable for 24 months. Non-hazardous. Also available WITHOUT BSA & azide at 1.0mg/ml.

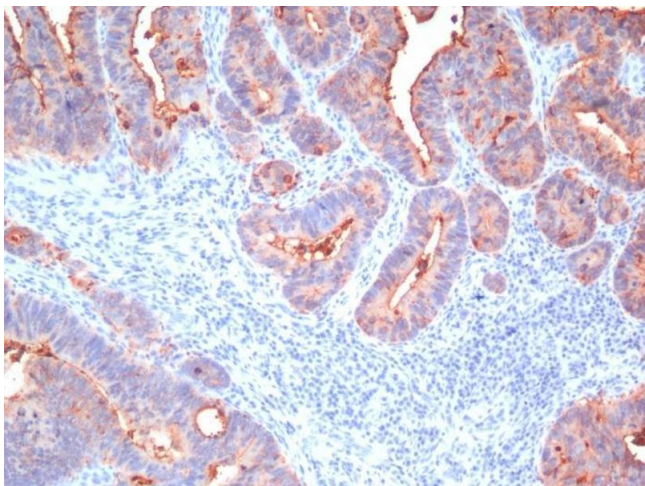
Expiry Date: 24 months

Images



Western Blotting

**Image 1.** SDS-PAGE Analysis Purified CEA Mouse Monoclonal Antibody (C66/1009). Confirmation of Purity and Integrity of Antibody.



Immunohistochemistry

**Image 2.** Formalin-fixed, paraffin-embedded human Colon Carcinoma stained with CEA, pan Mouse Monoclonal Antibody (Cocktail)