

Datasheet for ABIN6939113

**Recombinant anti-MALT1 antibody (AA 701-808)**[Go to Product page](#)**2** Images

## Overview

Quantity:	100 µg
Target:	MALT1
Binding Specificity:	AA 701-808
Reactivity:	Human
Host:	Rabbit
Antibody Type:	Recombinant Antibody
Clonality:	Monoclonal
Conjugate:	This MALT1 antibody is un-conjugated
Application:	Immunohistochemistry (Formalin-fixed Sections) (IHC (f))

## Product Details

Immunogen:	Human MALT1 recombinant fragment (aa701-808)
Clone:	MT1-3159R
Isotype:	IgG
Specificity:	Mucosa associated lymphoid tissue lymphoma translocation gene 1 (MALT1) is found in extranodal low-grade B cell lymphomas. MALT1 encodes two Ig-like C2-type domains and fuses with an API2 gene, which is highly expressed in adult lymphoid tissue. The translocation of this MALT1 gene, which maps to human chromosome 18q21, and the apoptosis-inhibiting API2 gene results in an increased development of MALT lymphomas and apoptosis inhibition. Sites at which this API2-MALT1 (11,18)(q21,q21) translocation commonly occurs are within human lung and kidney tissue. MALT lymphoma expresses nuclear Bcl10, which mediates the

## Product Details

oligomerization and activation of a MALT1 caspase-like domain. MALT1 mRNA is found in pre-B cells, mature B cells and plasma cells.

Cross-Reactivity (Details): Human,

Purification: 200ug/ml of Ab Purified from Bioreactor Concentrate by Protein A/G.

## Target Details

Target: MALT1

Alternative Name: MALT1 ([MALT1 Products](#))

Background: Caspase-like protein, MALT lymphoma-associated translocation, MALT1, Mucosa-associated lymphoid tissue lymphoma translocation protein 1, Paracaspase, MALT1 (MALT-Lymphoma Marker)  
Cellular localisation: Cytoplasmic

Molecular Weight: 93kDa

Gene ID: 10892, 601217

UniProt: [Q9UDY8](#)

Pathways: [TCR Signaling](#), [Fc-epsilon Receptor Signaling Pathway](#), [Regulation of Leukocyte Mediated Immunity](#), [Positive Regulation of Immune Effector Process](#), [Production of Molecular Mediator of Immune Response](#), [BCR Signaling](#), [Ubiquitin Proteasome Pathway](#), [S100 Proteins](#)

## Application Details

Application Notes: Positive Control: Jurkat, Daudi or HeLa cells. Tonsil or lymphoma.  
Known Application: Immunohistochemistry (Formalin-fixed) (1-2 µg/mL for 30 minutes at RT), (Staining of formalin-fixed tissues requires heating tissue sections in 10 mM Tris with 1 mM EDTA, pH 9.0, for 45 min at 95°C followed by cooling at RT for 20 minutes), Optimal dilution for a specific application should be determined.

Restrictions: For Research Use only

## Handling

Concentration: 200 µg/mL

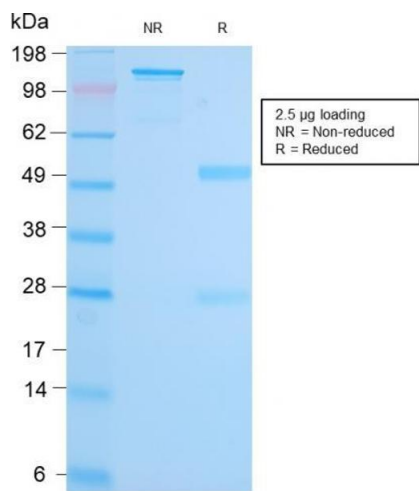
Buffer: Prepared in 10 mM PBS with 0.05 % BSA and 0.05 % azide.

Preservative: Sodium azide

## Handling

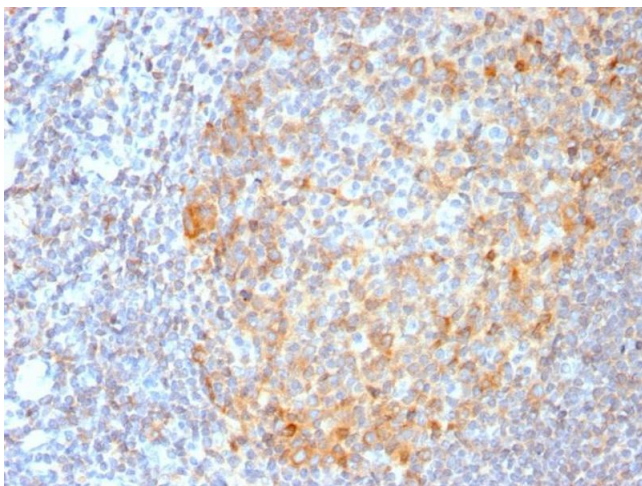
Precaution of Use:	This product contains Sodium azide: a POISONOUS AND HAZARDOUS SUBSTANCE which should be handled by trained staff only.
Storage:	4 °C,-80 °C
Storage Comment:	Antibody with azide - store at 2 to 8 °C. Antibody is stable for 24 months. Non-hazardous. Also available WITHOUT BSA & azide at 1.0mg/ml.
Expiry Date:	24 months

## Images



### SDS-PAGE

**Image 1.** SDS-PAGE Analysis Purified MALT1 Recombinant Rabbit Monoclonal Antibody (MT1/3159R). Confirmation of Purity and Integrity of Antibody.



### Immunohistochemistry

**Image 2.** Formalin-fixed, paraffin-embedded human Tonsil stained with MALT1 Recombinant Rabbit Monoclonal Antibody (MT1/3159R).