

Datasheet for ABIN6939147

anti-TOP1MT antibody

6 Images

[Go to Product page](#)

Overview

| | |
|--------------|--|
| Quantity: | 100 µg |
| Target: | TOP1MT |
| Reactivity: | Human |
| Host: | Mouse |
| Clonality: | Monoclonal |
| Conjugate: | This TOP1MT antibody is un-conjugated |
| Application: | Immunofluorescence (IF), Flow Cytometry (FACS), Western Blotting (WB), Immunohistochemistry (IHC), Staining Methods (StM) |

Product Details

| | |
|---------------|--|
| Immunogen: | Recombinant full-length human TOP1MT protein |
| Clone: | TOP1MT-488 |
| Isotype: | IgG2b kappa |
| Purification: | Purified by Protein A/G |

Target Details

| | |
|-------------------|--|
| Target: | TOP1MT |
| Alternative Name: | TOP1MT (TOP1MT Products) |
| Background: | DNA topoisomerases are nuclear enzymes that regulate the topological structure of DNA in eukaryotic cells by transiently breaking and rejoining DNA strands. Due to their roles in DNA replication, recombination, and transcription, DNA topoisomerases have been identified as |

Target Details

targets of numerous anticancer drugs. Mitochondrial Topo I (DNA topoisomerase I, mitochondrial) is a 601 amino acid protein that primarily acts to relieve DNA strain that may occur during duplication of mitochondrial DNA. As a type IB topoisomerase, mitochondrial Topo I requires a divalent metal, either, calcium or magnesium, as well as an alkaline pH for optimal activity.

Molecular Weight: 70kDa

Gene ID: 116447

UniProt: [Q969P6](#)

Application Details

Application Notes: Positive Control: MCF-7, A431 cells. Jurkat cell lysate. Heart, Skeletal Muscle, Brain or Fetal Liver tissue.

Known Application: Flow Cytometry (0.5-1 µg/million cells), Immunofluorescence (0.5-1 µg/mL), Western Blot (0.5-2 µg/mL), Immunohistochemistry (Formalin-fixed) (0.5-1 µg/mL for 30 minutes at RT)(Staining of formalin-fixed tissues requires boiling tissue sections in 10 mM citrate buffer, pH 6.0, for 10-20 min followed by cooling at RT for 20 minutes)Optimal dilution for a specific application should be determined.

Restrictions: For Research Use only

Handling

Concentration: 200 µg/mL

Buffer: 10 mM PBS with 0.05 % BSA & 0.05 % azide.

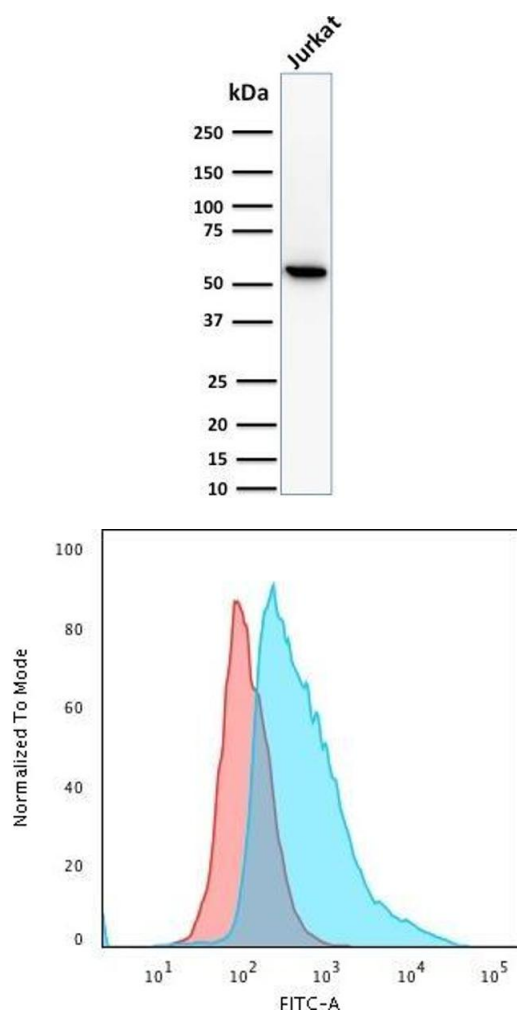
Preservative: Sodium azide

Precaution of Use: This product contains Sodium azide: a POISONOUS AND HAZARDOUS SUBSTANCE which should be handled by trained staff only.

Storage: 4 °C, -80 °C

Storage Comment: Antibody with azide - store at 2 to 8°C. Antibody without azide - store at -20 to -80°C. Antibody is stable for 24 months. Non-hazardous. No MSDS required.

Expiry Date: 24 months

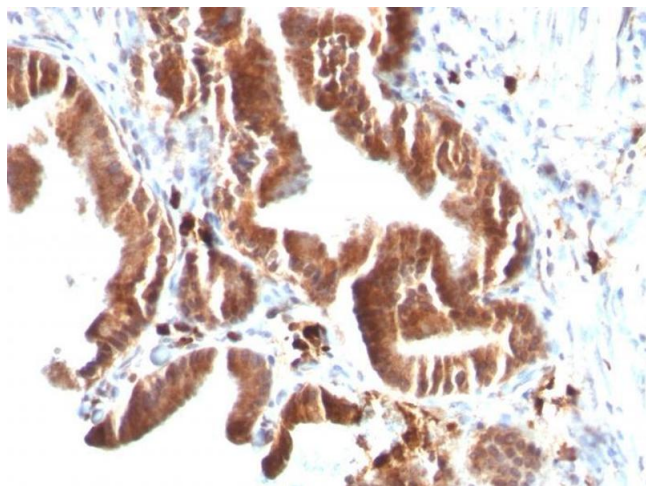


Western Blotting

Image 1. Western Blot Analysis of human Jurkat cell lysate using Topo I, MT Mouse Monoclonal Antibody (TOP1MT/488).

Flow Cytometry

Image 2. Flow Cytometric Analysis of PFA-fixed MCF-7 cells using Topo I, MT Mouse Monoclonal Antibody (TOP1MT/488) followed by Goat anti-Mouse IgG-CF488 (Blue); Isotype Control (Red).



Immunohistochemistry

Image 3. Formalin-fixed, paraffin-embedded human Gallbladder stained with Topo I, MT Mouse Monoclonal Antibody (TOP1MT/488).

Please check the [product details page](#) for more images. Overall 6 images are available for ABIN6939147.