

Datasheet for ABIN6939148

anti-TOP1MT antibody**3** Images[Go to Product page](#)

Overview

Quantity:	100 µg
Target:	TOP1MT
Reactivity:	Human
Host:	Mouse
Clonality:	Monoclonal
Conjugate:	This TOP1MT antibody is un-conjugated
Application:	Immunohistochemistry (IHC), Staining Methods (StM)

Product Details

Immunogen:	Recombinant full-length human TOP1MT protein
Clone:	TOP1MT-568
Isotype:	IgG1 kappa
Purification:	Purified by Protein A/G

Target Details

Target:	TOP1MT
Alternative Name:	TOP1MT (TOP1MT Products)
Background:	DNA topoisomerases are nuclear enzymes that regulate the topological structure of DNA in eukaryotic cells by transiently breaking and rejoining DNA strands. Due to their roles in DNA replication, recombination, and transcription, DNA topoisomerases have been identified as targets of numerous anticancer drugs. Mitochondrial Topo I (DNA topoisomerase I,

Target Details

mitochondrial) is a 601 amino acid protein that primarily acts to relieve DNA strain that may occur during duplication of mitochondrial DNA. As a type IB topoisomerase, mitochondrial Topo I requires a divalent metal, either, calcium or magnesium, as well as an alkaline pH for optimal activity.

Molecular Weight: 70kDa

Gene ID: 116447

UniProt: [Q969P6](#)

Application Details

Application Notes: Positive Control: A431 cells. Heart, Skeletal muscle, brain or fetal liver.
Known Application: Immunohistochemistry (Formalin-fixed) (0.5-1 µg/mL for 30 minutes at RT)(Staining of formalin-fixed tissues requires boiling tissue sections in 10 mM citrate buffer, pH 6.0, for 10-20 min followed by cooling at RT for 20 minutes)Optimal dilution for a specific application should be determined.

Restrictions: For Research Use only

Handling

Concentration: 200 µg/mL

Buffer: 10 mM PBS with 0.05 % BSA & 0.05 % azide.

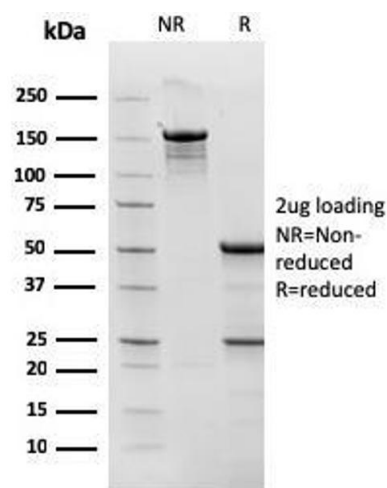
Preservative: Sodium azide

Precaution of Use: This product contains Sodium azide: a POISONOUS AND HAZARDOUS SUBSTANCE which should be handled by trained staff only.

Storage: 4 °C, -80 °C

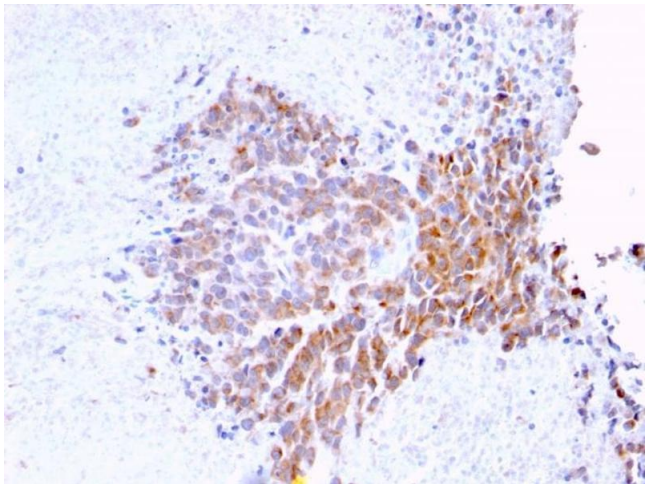
Storage Comment: Antibody with azide - store at 2 to 8°C. Antibody without azide - store at -20 to -80°C. Antibody is stable for 24 months. Non-hazardous. No MSDS required.

Expiry Date: 24 months



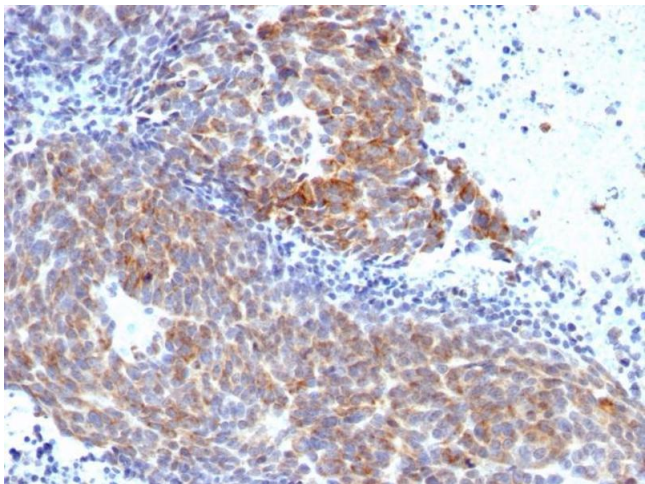
SDS-PAGE

Image 1. SDS-PAGE Analysis Purified Topo I, MT Mouse Monoclonal Antibody (TOP1MT/568). Confirmation of Purity and Integrity of Antibody.



Immunohistochemistry

Image 2. Formalin-fixed, paraffin-embedded human Melanoma stained with Topo I, MT Mouse Monoclonal Antibody (TOP1MT/568)



Immunohistochemistry

Image 3. Formalin-fixed, paraffin-embedded human Melanoma stained with Topo I, MT Mouse Monoclonal Antibody (TOP1MT/568).