

Datasheet for ABIN6939150
anti-CLTA/CLTB antibody (N-Term)

2 Images

[Go to Product page](#)

Overview

Quantity:	100 µg
Target:	CLTA/CLTB
Binding Specificity:	N-Term
Reactivity:	Human
Host:	Mouse
Clonality:	Monoclonal
Application:	Immunohistochemistry (IHC), Staining Methods (StM)

Product Details

Immunogen:	Purified recombinant N-terminal fragment of human Clathrin Light Chain
Clone:	CLC-1421
Isotype:	IgG2b kappa
Specificity:	Recognizes proteins of 31-44 kDa, which are identified as Clathrin Light Chains (both A B). Clathrin is composed of three heavy chains and three light chains, which associate non-covalently to form a triskelion structure. Clathrin light chain regulates the self-assembly of triskelions onto intracellular membranes. Clathrin light chain subunits (LCA and LCB) contribute to regulation of coated vesicle formation to sort proteins during receptor-mediated endocytosis and organelle biogenesis. LCA and LCB are encoded by two discrete genes. They share only 60 % homology, and have certain features in common. Both LCA and LCB undergo alternative mRNA splicing, which results in the generation of tissue-specific isoforms.
Purification:	Purified by Protein A/G

Target Details

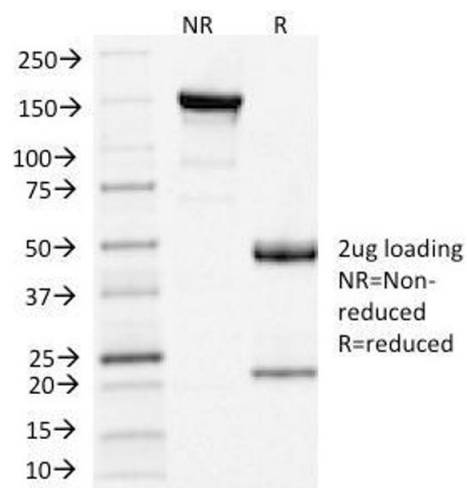
Target:	CLTA/CLTB
Alternative Name:	CLTA and CLTB (CLTA/CLTB Products)
Molecular Weight:	31-44kDa
Gene ID:	1211, 1212
UniProt:	P09496 , P09497

Application Details

Application Notes:	Positive Control: HeLa cells. Placenta or Prostate Carcinoma. Known Application: Immunohistochemistry (Formalin-fixed) (0.5-1 µg/mL for 30 min at RT)(Staining of formalin-fixed tissues requires boiling tissue sections in 10 mM Citrate Buffer, pH 6.0, for 10-20 min followed by cooling at RT for 20 minutes)Optimal dilution for a specific application should be determined.
Restrictions:	For Research Use only

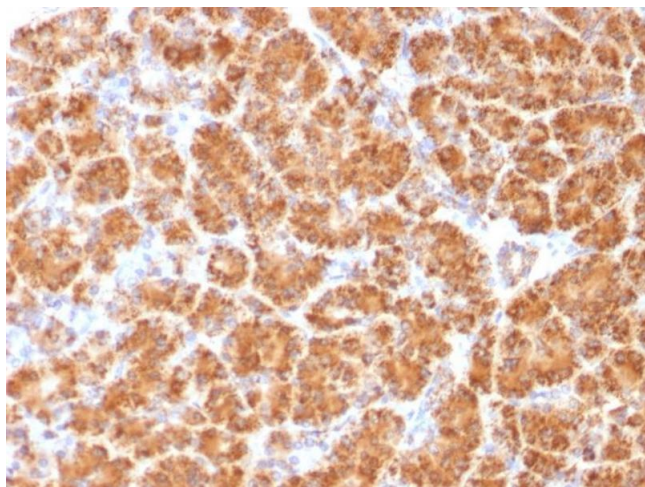
Handling

Concentration:	200 µg/mL
Buffer:	10 mM PBS with 0.05 % BSA & 0.05 % azide.
Preservative:	Sodium azide
Precaution of Use:	This product contains Sodium azide: a POISONOUS AND HAZARDOUS SUBSTANCE which should be handled by trained staff only.
Storage:	4 °C,-80 °C
Storage Comment:	Antibody with azide - store at 2 to 8°C. Antibody without azide - store at -20 to -80°C. Antibody is stable for 24 months. Non-hazardous. No MSDS required.
Expiry Date:	24 months



SDS-PAGE

Image 1. SDS-PAGE Analysis of Purified Clathrin, LC Mouse Monoclonal Antibody (CLC/1421). Confirmation of Purity and Integrity of Antibody



Immunohistochemistry

Image 2. Formalin-fixed, paraffin-embedded human Pancreas stained with Clathrin, LC Monoclonal Antibody (CLC/1421).