



[Go to Product page](#)

Datasheet for ABIN6939152

## anti-Clathrin Heavy Chain (CLTC) (N-Term) antibody

### 1 Image

#### Overview

Quantity:	100 µg
Target:	Clathrin Heavy Chain (CLTC)
Binding Specificity:	N-Term
Reactivity:	Human
Host:	Mouse
Clonality:	Monoclonal
Application:	ELISA, Coating (Coat)

#### Product Details

Immunogen:	Purified recombinant N-terminal fragment of human Clathrin Heavy Chain
Clone:	CLTC-1431
Isotype:	IgG1 kappa
Specificity:	Recognizes protein of 192 kDa, which is identified as Clathrin Heavy Chain. Clathrin is composed of three heavy chains and three light chains, which associate non-covalently to form a triskelion structure. Clathrin heavy chain (HC) is composed of a terminal globular domain, a distal segment and a proximal segment containing a light chain-binding site. The proximal segment of the Clathrin HC protein is essential for interactions between Clathrin heavy chains and light chains, which result in the formation of the triskelion structure.
Purification:	Purified by Protein A/G

## Target Details

---

Target: Clathrin Heavy Chain (CLTC)

Alternative Name: CLTC ([CLTC Products](#))

Molecular Weight: 192kDa

Gene ID: 1213

UniProt: [P53675](#), [Q00610](#)

## Application Details

---

Application Notes: Positive Control: HeLa cells. Placenta or Prostate Carcinoma.  
Known Application: ELISA (For coating, order Ab without BSA), Optimal dilution for a specific application should be determined.

Restrictions: For Research Use only

## Handling

---

Concentration: 200 µg/mL

Buffer: 10 mM PBS with 0.05 % BSA & 0.05 % azide.

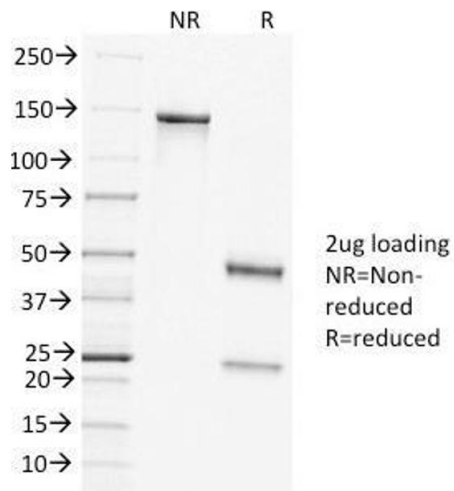
Preservative: Sodium azide

Precaution of Use: This product contains Sodium azide: a POISONOUS AND HAZARDOUS SUBSTANCE which should be handled by trained staff only.

Storage: 4 °C, -80 °C

Storage Comment: Antibody with azide - store at 2 to 8°C. Antibody without azide - store at -20 to -80°C. Antibody is stable for 24 months. Non-hazardous. No MSDS required.

Expiry Date: 24 months



### SDS-PAGE

**Image 1.** SDS-PAGE Analysis of Purified Clathrin HC Mouse Monoclonal Antibody (CLTC/1431). Confirmation of Purity and Integrity of Antibody.