

Datasheet for ABIN6939153
anti-Clathrin Heavy Chain (CLTC) antibody

2 Images

[Go to Product page](#)

Overview

Quantity:	100 µg
Target:	Clathrin Heavy Chain (CLTC)
Reactivity:	Human, Mouse, Rat, Cow, Pig, Dog, Xenopus laevis, Avian, Green Monkey
Host:	Mouse
Clonality:	Monoclonal
Conjugate:	Un-conjugated
Application:	Immunofluorescence (IF)

Product Details

Immunogen:	Recombinant full-length human Clathrin Heavy Chain protein
Clone:	CHC-1432
Isotype:	IgG1 kappa
Specificity:	Recognizes protein of 192 kDa, which is identified as Clathrin Heavy Chain. Clathrin is composed of three heavy chains and three light chains, which associate non-covalently to form a triskelion structure. Clathrin heavy chain (HC) is composed of a terminal globular domain, a distal segment and a proximal segment containing a light chain-binding site. The proximal segment of the Clathrin HC protein is essential for interactions between Clathrin heavy chains and light chains, which result in the formation of the triskelion structure.
Purification:	Purified by Protein A/G

Target Details

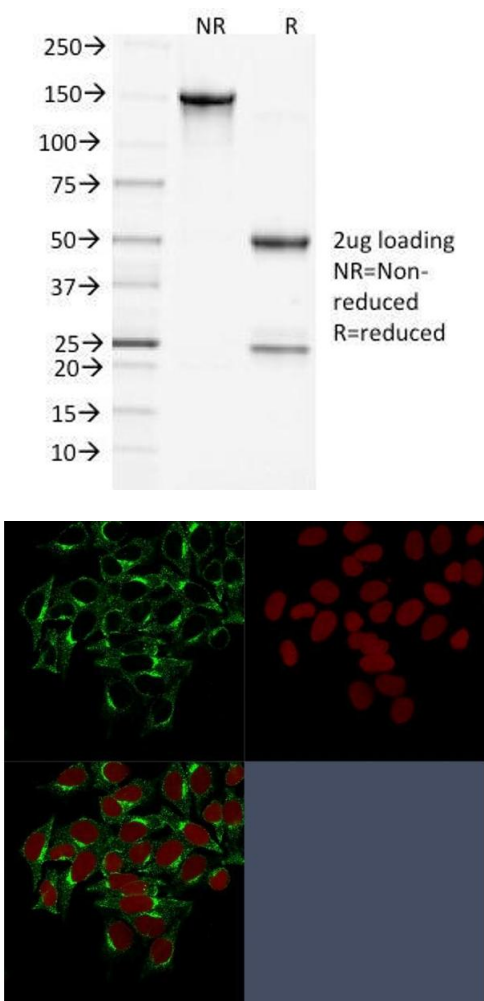
Target:	Clathrin Heavy Chain (CLTC)
Alternative Name:	CLTC (CLTC Products)
Molecular Weight:	192kDa
Gene ID:	1213
UniProt:	P53675 , Q00610

Application Details

Application Notes:	Positive Control: HeLa cells. Placenta or Prostate Carcinoma. Known Application: Immunofluorescence (1-2 µg/mL), Optimal dilution for a specific application should be determined.
Restrictions:	For Research Use only

Handling

Concentration:	200 µg/mL
Buffer:	10 mM PBS with 0.05 % BSA & 0.05 % azide.
Preservative:	Sodium azide
Precaution of Use:	This product contains Sodium azide: a POISONOUS AND HAZARDOUS SUBSTANCE which should be handled by trained staff only.
Storage:	4 °C, -80 °C
Storage Comment:	Antibody with azide - store at 2 to 8°C. Antibody without azide - store at -20 to -80°C. Antibody is stable for 24 months. Non-hazardous. No MSDS required.
Expiry Date:	24 months



SDS-PAGE

Image 1. SDS-PAGE Analysis Purified Clathrin, HC Monoclonal Antibody (CHC/1432). Confirmation of Purity and Integrity of Antibody.

Immunofluorescence

Image 2. Confocal Immunofluorescence image of HeLa cells stained with Clathrin, HC Monoclonal Antibody (CHC/1432) followed by Goat anti-Mouse CF488 (green). Reddot is used to label the nuclei red.