



[Go to Product page](#)

Datasheet for ABIN6939182
anti-CD21 antibody (AA 44-196)

4 Images

Overview

Quantity:	100 µg
Target:	CD21 (CR2)
Binding Specificity:	AA 44-196
Reactivity:	Human
Host:	Mouse
Clonality:	Monoclonal
Conjugate:	This CD21 antibody is un-conjugated
Application:	Immunohistochemistry (IHC), ELISA, Staining Methods (StM), Coating (Coat)

Product Details

Immunogen:	Recombinant fragment (around aa 44-196) of human CR2 (CD21) protein (exact sequence is proprietary)
Clone:	CR2-1952
Isotype:	IgG1 kappa
Specificity:	Recognizes a protein of 140 kDa, which is identified as the complement receptor 2 (CR2) / CD21. This protein is expressed strongly on mature B cells, follicular dendritic cells and weakly on immature thymocytes and T lymphocytes. In B-cell ontogeny, CD21 appears after the pre-B-stage, is maintained during peripheral B-cell development and is lost upon terminal differentiation into plasma cells. CD21 expression is also gradually lost after stimulation of B cells in vitro. CD21 functions as receptor for C3d, C3dg and iC3b Complement components, for EBV and for IFNalpha. CD21 binds to CD23 and associates with CD19, CD81 and Leu13 to form

Product Details

a large signal-transduction complex involved in B cell activation.

Purification: Purified by Protein A/G

Target Details

Target: CD21 (CR2)

Alternative Name: CR2 ([CR2 Products](#))

Molecular Weight: 140kDa

Gene ID: 1380

UniProt: [P20023](#)

Pathways: [Complement System](#)

Application Details

Application Notes: Positive Control: WEHI-231 cells and Tonsil.
Known Application: ELISA (For coating, order antibody without BSA),Immunohistochemistry (Formalin-fixed) (1-2 µg/mL for 30 min at RT),(Staining of formalin-fixed tissues requires boiling tissue sections in 10 mM Citrate Buffer, pH 6.0, for 10-20 min followed by cooling at RT for 20 minutes),Optimal dilution for a specific application should be determined.

Restrictions: For Research Use only

Handling

Concentration: 200 µg/mL

Buffer: 10 mM PBS with 0.05 % BSA & 0.05 % azide.

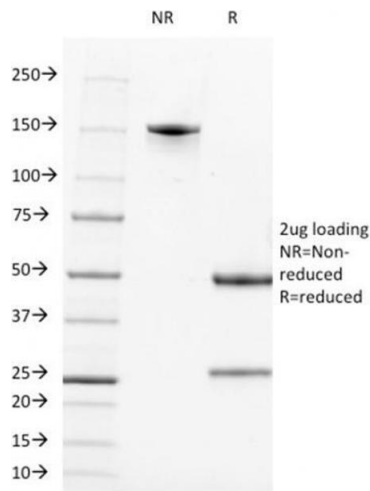
Preservative: Sodium azide

Precaution of Use: This product contains Sodium azide: a POISONOUS AND HAZARDOUS SUBSTANCE which should be handled by trained staff only.

Storage: 4 °C,-80 °C

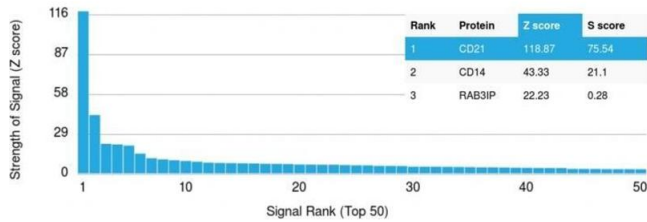
Storage Comment: Antibody with azide - store at 2 to 8°C. Antibody without azide - store at -20 to -80°C. Antibody is stable for 24 months. Non-hazardous. No MSDS required.

Expiry Date: 24 months



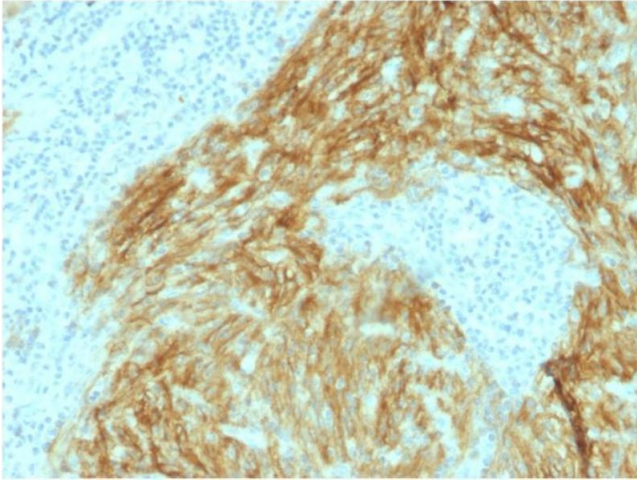
SDS-PAGE

Image 1. SDS-PAGE Analysis Purified CD21 / CR2 Mouse Monoclonal Antibody (CR2/1952). Confirmation of Integrity and Purity of Antibody.



Protein Array

Image 2. Analysis of Protein Array containing more than 19,000 full-length human proteins using CD21 Mouse Monoclonal Antibody (CR2/1952) Z- and S- Score: The Z-score represents the strength of a signal that a monoclonal antibody (MAb) (in combination with a fluorescently-tagged anti-IgG secondary antibody) produces when binding to a particular protein on the HuProt™ array. Z-scores are described in units of standard deviations (SDs) above the mean value of all signals generated on that array. If targets on HuProt™ are arranged in descending order of the Z-score, the S-score is the difference (also in units of SDs) between the Z-score. S-score therefore represents the relative target specificity of a MAb to its intended target. A MAb is considered to specific to its intended target, if the MAb has an S-score of at least 2.5. For example, if a MAb binds to protein X with a Z-score of 43 and to protein Y with a Z-score of 14, then the S-score for the binding of that MAb to protein X is equal to 29.



Immunohistochemistry

Image 3. Formalin-fixed, paraffin-embedded human Follicular Dendritic Cell Sarcoma stained with CD21 / CR2 Mouse Monoclonal Antibody (CR2/1952).

Please check the [product details page](#) for more images. Overall 4 images are available for ABIN6939182.