



## Datasheet for ABIN6939185 **anti-CD21 antibody (AA 142-240)**



[Go to Product page](#)

### 3 Images

#### Overview

Quantity:	100 µg
Target:	CD21 (CR2)
Binding Specificity:	AA 142-240
Reactivity:	Human
Host:	Mouse
Clonality:	Monoclonal
Conjugate:	This CD21 antibody is un-conjugated
Application:	Immunohistochemistry (IHC), ELISA, Staining Methods (StM), Coating (Coat)

#### Product Details

Immunogen:	Recombinant fragment (around aa 142-240) of human CR2 (CD21) protein (exact sequence is proprietary)
Clone:	CR2-3247
Isotype:	IgG2b kappa
Specificity:	Recognizes a protein of 140 kDa, which is identified as the complement receptor 2 (CR2) or CD21. This protein is expressed strongly on mature B cells, follicular dendritic cells and weakly on immature thymocytes and T lymphocytes. In B-cell ontogeny, CD21 appears after the pre-B-stage, is maintained during peripheral B-cell development and is lost upon terminal differentiation into plasma cells. CD21 expression is also gradually lost after stimulation of B cells in vitro. CD21 functions as receptor for C3d, C3dg and iC3b Complement components, for EBV and for IFNalpha. CD21 binds to CD23 and associates with CD19, CD81 and Leu13 to form

## Product Details

---

a large signal-transduction complex involved in B cell activation.

Purification: Purified by Protein A/G

## Target Details

---

Target: CD21 (CR2)

Alternative Name: CR2 ([CR2 Products](#))

Molecular Weight: 140kDa

Gene ID: 1380

UniProt: [P20023](#)

Pathways: [Complement System](#)

## Application Details

---

Application Notes: Positive Control: Raji or WEHI-231 cells. Tonsil.  
Known Application: ELISA (For coating, order antibody without BSA), Immunohistochemistry (Formalin-fixed) (1-2 µg/mL for 30 min at RT), (Staining of formalin-fixed tissues requires boiling tissue sections in 10 mM Citrate Buffer, pH 6.0, for 10-20 min followed by cooling at RT for 20 minutes), Optimal dilution for a specific application should be determined.

Restrictions: For Research Use only

## Handling

---

Concentration: 200 µg/mL

Buffer: 10 mM PBS with 0.05 % BSA & 0.05 % azide.

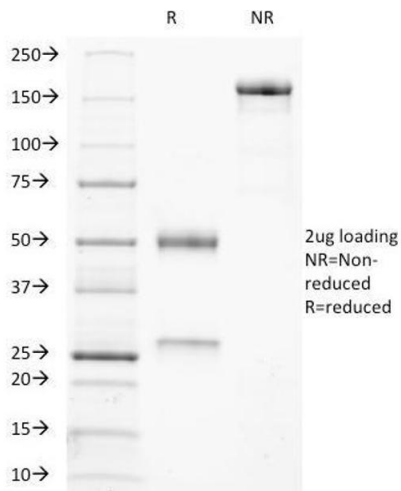
Preservative: Sodium azide

Precaution of Use: This product contains Sodium azide: a POISONOUS AND HAZARDOUS SUBSTANCE which should be handled by trained staff only.

Storage: 4 °C, -80 °C

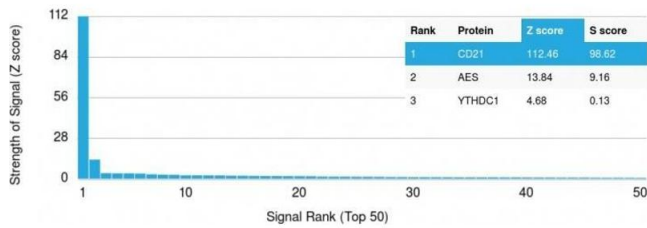
Storage Comment: Antibody with azide - store at 2 to 8°C. Antibody without azide - store at -20 to -80°C. Antibody is stable for 24 months. Non-hazardous. No MSDS required.

Expiry Date: 24 months



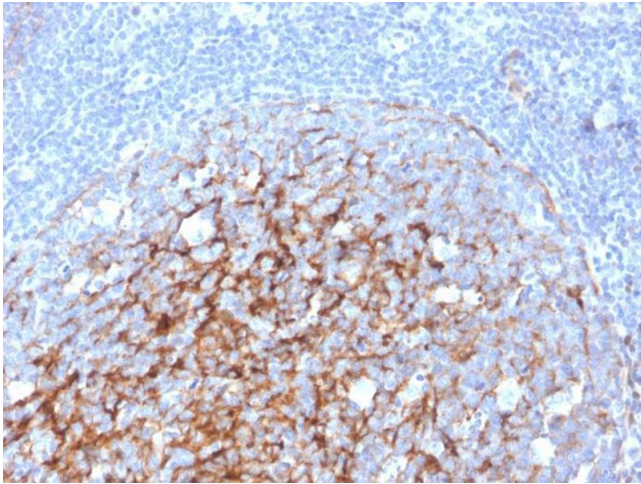
### SDS-PAGE

**Image 1.** SDS-PAGE Analysis Purified CD21-Monospecific Mouse Monoclonal Antibody (CR2/3247). Confirmation of Integrity and Purity of Antibody.



### Protein Array

**Image 2.** Analysis of Protein Array containing more than 19,000 full-length human proteins using CD21-Monospecific Mouse Monoclonal Antibody (CR2/3247) Z- and S- Score: The Z-score represents the strength of a signal that a monoclonal antibody (Monoclonal Antibody) (in combination with a fluorescently-tagged anti-IgG secondary antibody) produces when binding to a particular protein on the HuProt™ array. Z-scores are described in units of standard deviations (SDs) above the mean value of all signals generated on that array. If targets on HuProt™ are arranged in descending order of the Z-score, the S-score is the difference (also in units of SDs) between the Z-score. S-score therefore represents the relative target specificity of a Monoclonal Antibody to its intended target. A Monoclonal Antibody is considered to specific to its intended target, if the Monoclonal Antibody has an S-score of at least 2.5. For example, if a Monoclonal Antibody binds to protein X with a Z-score of 43 and to protein Y with a Z-score of 14, then the S-score for the binding of that Monoclonal Antibody to protein X is equal to 29.



### Immunohistochemistry

**Image 3.** Formalin-fixed, paraffin-embedded human Tonsil stained with CD21-Monospecific Mouse Monoclonal Antibody (CR2/3247).