

Datasheet for ABIN6939186

Recombinant anti-CD21 antibody (AA 142-240)



[Go to Product page](#)

4 Images

Overview

Quantity:	100 µg
Target:	CD21 (CR2)
Binding Specificity:	AA 142-240
Reactivity:	Human
Host:	Rabbit
Antibody Type:	Recombinant Antibody
Clonality:	Monoclonal
Conjugate:	This CD21 antibody is un-conjugated
Application:	Flow Cytometry (FACS), Immunohistochemistry (IHC), Western Blotting (WB), Immunofluorescence (IF), Staining Methods (StM)

Product Details

Immunogen:	Recombinant fragment (around aa 142-240) of human CR2 (CD21) protein (exact sequence is proprietary)
Clone:	CR2-3124R
Isotype:	IgG
Specificity:	Recognizes a protein of 140 kDa, which is identified as the complement receptor 2 (CR2) or CD21. This protein is expressed strongly on mature B cells, follicular dendritic cells and weakly on immature thymocytes and T lymphocytes. In B-cell ontogeny, CD21 appears after the pre-B-stage, is maintained during peripheral B-cell development and is lost upon terminal differentiation into plasma cells. CD21 expression is also gradually lost after stimulation of B

Product Details

cells in vitro. CD21 functions as receptor for C3d, C3dg and iC3b Complement components, for EBV and for IFNalpha. CD21 binds to CD23 and associates with CD19, CD81 and Leu13 to form a large signal-transduction complex involved in B cell activation.

Purification: Purified by Protein A/G

Target Details

Target: CD21 (CR2)

Alternative Name: CR2 ([CR2 Products](#))

Molecular Weight: 140kDa

Gene ID: 1380

UniProt: [P20023](#)

Pathways: [Complement System](#)

Application Details

Application Notes: Positive Control: MOLT4, WEHI-231 cells and Tonsil.
Known Application: Flow Cytometry (1-2 µg/million cells), Immunofluorescence (1-2 µg/mL), Western Blot (0.5-2 µg/mL), Immunohistochemistry (Formalin-fixed) (1-2 µg/mL for 30 min at RT),(Staining of formalin-fixed tissues requires boiling tissue sections in 10 mM Citrate Buffer, pH 6.0, for 10-20 min followed by cooling at RT for 20 minutes),Optimal dilution for a specific application should be determined.

Restrictions: For Research Use only

Handling

Concentration: 200 µg/mL

Buffer: 10 mM PBS with 0.05 % BSA & 0.05 % azide.

Preservative: Sodium azide

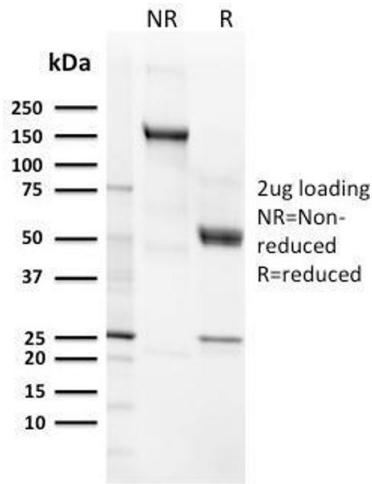
Precaution of Use: This product contains Sodium azide: a POISONOUS AND HAZARDOUS SUBSTANCE which should be handled by trained staff only.

Storage: 4 °C,-80 °C

Storage Comment: Antibody with azide - store at 2 to 8°C. Antibody without azide - store at -20 to -80°C. Antibody

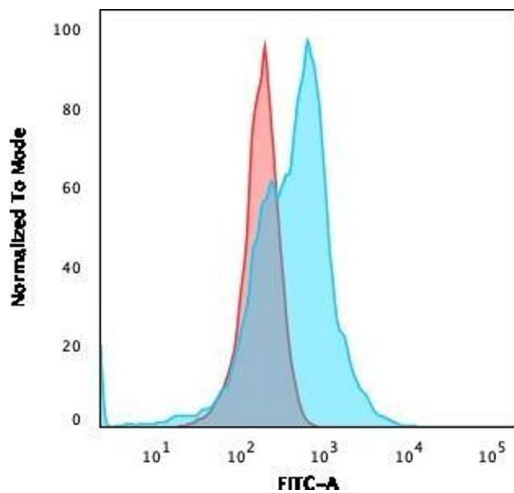
is stable for 24 months. Non-hazardous. No MSDS required.

Expiry Date: 24 months



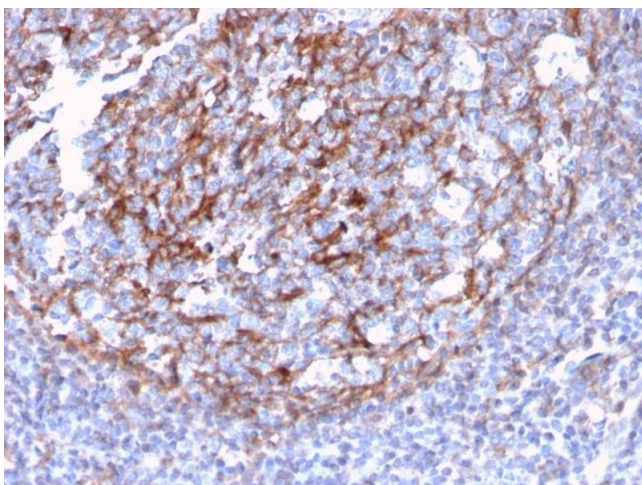
SDS-PAGE

Image 1. SDS-PAGE Analysis Purified CD21 / CR2 Recombinant Rabbit Monoclonal Antibody (CR2/3124R). Confirmation of Purity and Integrity of Antibody.



Flow Cytometry

Image 2. Flow Cytometric Analysis of PFA-fixed MOLT4 cells. CD21 / CR2 Recombinant Rabbit Monoclonal Antibody (CR2/3124R) followed by Goat anti-rabbit IgG-CF488 (Blue); Isotype Control (Red).



Immunohistochemistry

Image 3. Formalin-fixed, paraffin-embedded human Tonsil Dendritic stained with CD21 / CR2 Recombinant Rabbit Monoclonal Antibody (CR2/3124R).

Please check the [product details page](#) for more images. Overall 4 images are available for ABIN6939186.