

Datasheet for ABIN6939232

**anti-AKR1C2 antibody**

5 Images

[Go to Product page](#)

## Overview

Quantity:	100 µg
Target:	AKR1C2
Reactivity:	Human
Host:	Mouse
Clonality:	Monoclonal
Application:	Western Blotting (WB), Immunohistochemistry (IHC), Staining Methods (StM)

## Product Details

Immunogen:	Recombinant human full-length AKR1C2 protein
Clone:	CPTC-AKR1C2-1
Isotype:	IgG2a kappa
Purification:	Purified by Protein A/G

## Target Details

Target:	AKR1C2
Alternative Name:	AKR1C2 ( <a href="#">AKR1C2 Products</a> )
Background:	DDH2 / AKR1C2 is a member of the aldo/keto reductase superfamily, which consists of more than 40 known enzymes and proteins. These enzymes catalyze the conversion of aldehydes and ketones to their corresponding alcohols by utilizing NADH and/or NADPH as cofactors. The enzymes display overlapping but distinct substrate specificity. This enzyme catalyzes the reaction of progesterone to the inactive form 20-alpha-hydroxy-progesterone.

## Target Details

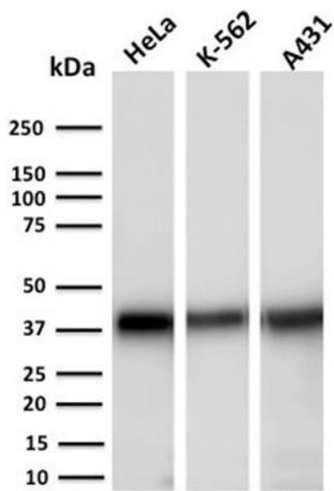
Molecular Weight:	37kDa
Gene ID:	1646
UniProt:	<a href="#">P52895</a>
Pathways:	<a href="#">Steroid Hormone Biosynthesis</a> , <a href="#">C21-Steroid Hormone Metabolic Process</a>

## Application Details

Application Notes:	Positive Control: HeLa, K-562, A431, HepG2, A549 cells. Human liver or stomach tissue. Known Application: Western Blot (1-2 µg/mL), Immunohistochemistry (Formalin-fixed) (0.5-1 µg/mL for 30 min at RT)(Staining of formalin-fixed tissues requires boiling tissue sections in 10 mM Citrate Buffer, pH 6.0, for 10-20 min followed by cooling at RT for 20 minutes)Optimal dilution for a specific application should be determined.
Restrictions:	For Research Use only

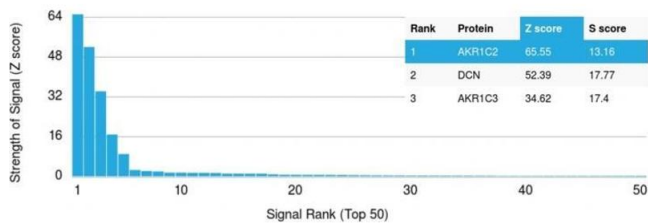
## Handling

Concentration:	200 µg/mL
Buffer:	10 mM PBS with 0.05 % BSA & 0.05 % azide.
Preservative:	Sodium azide
Precaution of Use:	This product contains Sodium azide: a POISONOUS AND HAZARDOUS SUBSTANCE which should be handled by trained staff only.
Storage:	4 °C,-80 °C
Storage Comment:	Antibody with azide - store at 2 to 8°C. Antibody without azide - store at -20 to -80°C. Antibody is stable for 24 months. Non-hazardous. No MSDS required.
Expiry Date:	24 months



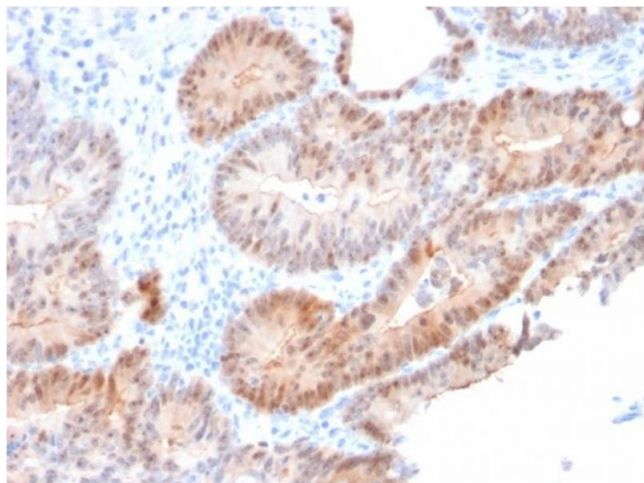
Western Blotting

**Image 1.** Western Blot Analysis of Human HeLa, K-562 and A431 cell lysates using AKR1C2 Mouse Monoclonal Antibody (CPTC-AKR1C2-1).



Protein Array

**Image 2.** Analysis of Protein Array containing more than 19,000 full-length human proteins using Aldo-keto Reductase Family 1 Member C2 / DD2 Mouse Monoclonal Antibody (CPTC- AKR1C2-1). Z- and S- Score: The Z-score represents the strength of a signal that a monoclonal antibody (MAb) (in combination with a fluorescently-tagged anti-IgG secondary antibody) produces when binding to a particular protein on the HuProtTM array. Z-scores are described in units of standard deviations (SD's) above the mean value of all signals generated on that array. If targets on HuProtTM are arranged in descending order of the Z-score, the S-score is the difference (also in units of SD's) between the Z-score. S-score therefore represents the relative target specificity of a MAb to its intended target. A MAb is considered to specific to its intended target, if the MAb has an S-score of at least 2.5. For example, if a MAb binds to protein X with a Z-score of 43 and to protein Y with a Z-score of 14, then the S-score for the binding of that MAb to protein X is equal to 29.



### Immunohistochemistry

**Image 3.** Formalin-fixed, paraffin-embedded human Prostate Carcinoma stained with AKR1C2 Mouse Monoclonal Antibody (CPTC-AKR1C2-1).

Please check the [product details page](#) for more images. Overall 5 images are available for ABIN6939232.