

Datasheet for ABIN6939279

anti-ECM1 antibody**2** Images[Go to Product page](#)

Overview

Quantity:	100 µg
Target:	ECM1
Reactivity:	Human, Rat
Host:	Mouse
Clonality:	Monoclonal
Conjugate:	This ECM1 antibody is un-conjugated
Application:	Immunohistochemistry (IHC), Immunofluorescence (IF), Flow Cytometry (FACS), Staining Methods (StM)

Product Details

Immunogen:	Secretory Component protein isolated from human colostrum
Clone:	SC05
Isotype:	IgG1 kappa
Specificity:	<p>This MAb reacts with a reduction-resistant epitope present in both free and SIgA bound Secretory Component. It does not react with the cell lines lacking secretory component. The antibody is useful for studying the distribution and level of both free and bound secretory component. Secretory component is differentially expressed in epithelium, and the antibody is a popular marker for identifying subpopulations of epithelial cells and epithelial differentiation. The Secretory component antibody is a useful research tool for studying mucosal immunity, inflammation, remodeling, differentiation and tumorigenesis, all processes associated with differential secretory component expression.</p>

Product Details

Purification: Purified by Protein A/G

Target Details

Target: ECM1

Alternative Name: ECM1 ([ECM1 Products](#))

Molecular Weight: ~80kDa

Gene ID: 1893

UniProt: [Q16610](#)

Application Details

Application Notes: Positive Control: Stomach, Lung or Breast tumor.
Known Application: Flow Cytometry (0.5-1 µg/million cells), Immunofluorescence (1-2 µg/mL), Immunohistochemistry (Formalin-fixed) (0.5-1 µg/mL for 30 minutes at RT) (Staining of formalin-fixed tissues requires boiling tissue sections in 10 mM Citrate Buffer, pH 6.0, for 10-20 min followed by cooling at RT for 20 minutes) Optimal dilution for a specific application should be determined.

Restrictions: For Research Use only

Handling

Concentration: 200 µg/mL

Buffer: 10 mM PBS with 0.05 % BSA & 0.05 % azide.

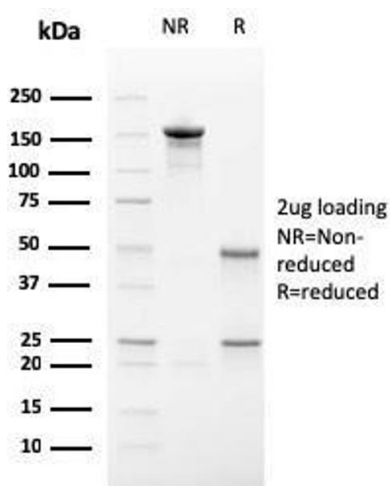
Preservative: Sodium azide

Precaution of Use: This product contains Sodium azide: a POISONOUS AND HAZARDOUS SUBSTANCE which should be handled by trained staff only.

Storage: 4 °C, -80 °C

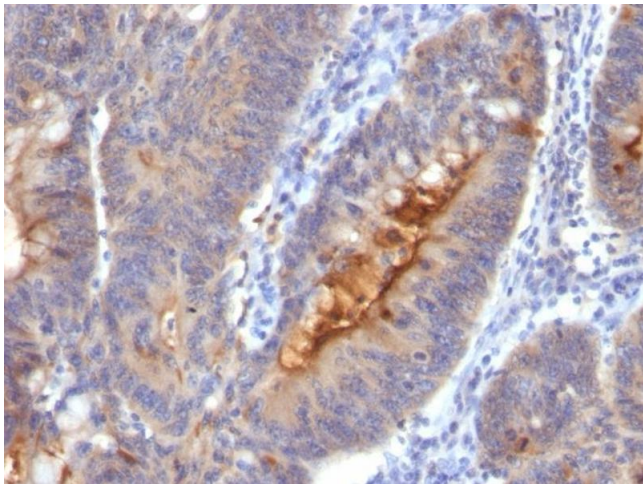
Storage Comment: Antibody with azide - store at 2 to 8°C. Antibody without azide - store at -20 to -80°C. Antibody is stable for 24 months. Non-hazardous. No MSDS required.

Expiry Date: 24 months



SDS-PAGE

Image 1. SDS-PAGE Analysis Purified Secretory Component Mouse Monoclonal Antibody (SC-05). Confirmation of Purity and Integrity of Antibody.



Immunohistochemistry

Image 2. Formalin-fixed, paraffin-embedded human Colon Carcinoma stained with Secretory Component Mouse Monoclonal Antibody (SC-05).