



[Go to Product page](#)

Datasheet for ABIN6939301

anti-Elastin antibody

3 Images

Overview

Quantity:	100 µg
Target:	Elastin (ELN)
Reactivity:	Human
Host:	Mouse
Clonality:	Monoclonal
Conjugate:	This Elastin antibody is un-conjugated
Application:	Immunohistochemistry (IHC), ELISA, Coating (Coat), Staining Methods (StM)

Product Details

Immunogen:	Recombinant full-length human Elastin protein
Clone:	ELN-1981
Isotype:	IgG1 kappa
Purification:	Purified by Protein A/G

Target Details

Target:	Elastin (ELN)
Alternative Name:	ELN (ELN Products)
Background:	Elastin is a polymeric protein and is the main component of the extracellular matrix of arteries. It is synthesized and secreted as a soluble, single-chain protein (tropoelastin), which undergoes a number of post-translational modifications prior to its organization into an elastic fiber in the extracellular space. Elastin performs a regulatory function during arterial development by

Target Details

controlling proliferation of smooth muscle and stabilizing arterial structure. It imparts elasticity to the connective tissue. During aging, the elasticity of connective tissue is reduced because of the cross-linking of collagenous fibers with elastin. The abnormal accumulation of elastic tissue in blood vessels is found in atherosclerosis and hypertension.

Molecular Weight: 70kDa

Gene ID: 2006

UniProt: [P15502](#)

Pathways: [Regulation of Actin Filament Polymerization](#)

Application Details

Application Notes: Positive Control: A549 or U-2197 cells. Liver, Kidney, Lung or Intestine.
Known Application: ELISA (For coating, order Ab without BSA), Immunohistochemistry (Formalin-fixed) (1-2 µg/mL for 30 min at RT)(Staining of formalin-fixed tissues requires boiling tissue sections in 10 mM citrate buffer, pH 6.0, for 10-20 min followed by cooling at RT for 20 minutes)Optimal dilution for a specific application should be determined.

Restrictions: For Research Use only

Handling

Concentration: 200 µg/mL

Buffer: 10 mM PBS with 0.05 % BSA & 0.05 % azide.

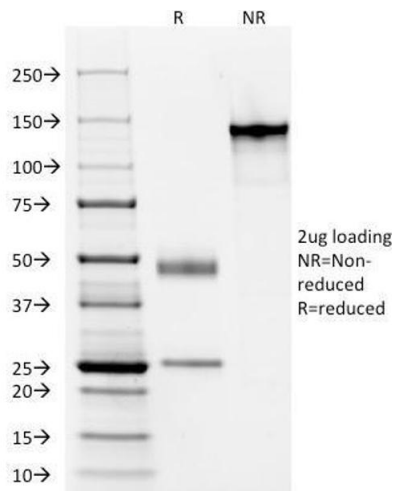
Preservative: Sodium azide

Precaution of Use: This product contains Sodium azide: a POISONOUS AND HAZARDOUS SUBSTANCE which should be handled by trained staff only.

Storage: 4 °C,-80 °C

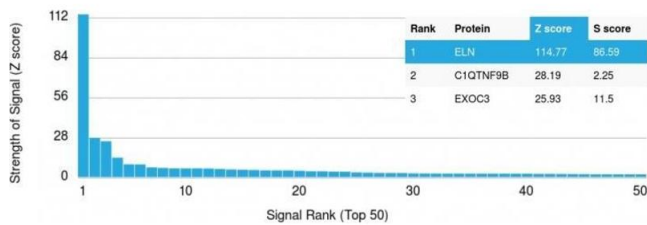
Storage Comment: Antibody with azide - store at 2 to 8°C. Antibody without azide - store at -20 to -80°C. Antibody is stable for 24 months. Non-hazardous. No MSDS required.

Expiry Date: 24 months



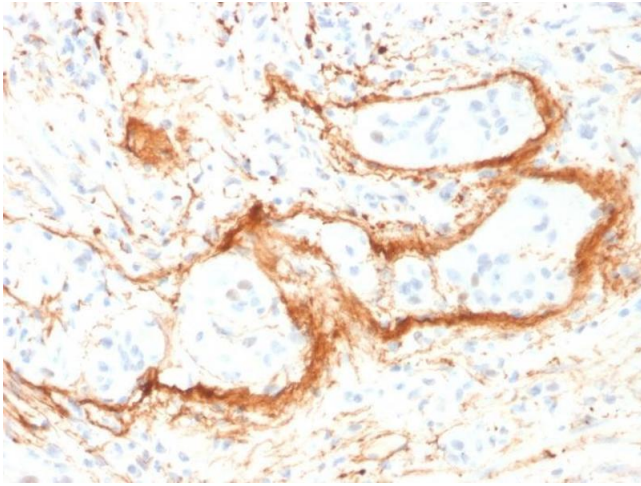
SDS-PAGE

Image 1. SDS-PAGE Analysis Purified Elastin Mouse Monoclonal Antibody (ELN/1981). Confirmation of Integrity and Purity of Antibody.



Protein Array

Image 2. Analysis of Protein Array containing >19,000 full-length human proteins using Elastin (ELN) Mouse Monoclonal Antibody (ELN/1981) Z- and S- Score: The Z-score represents the strength of a signal that a monoclonal antibody (Monoclonal Antibody) (in combination with a fluorescently-tagged anti-IgG secondary antibody) produces when binding to a particular protein on the HuProt™ array. Z-scores are described in units of standard deviations (SD's) above the mean value of all signals generated on that array. If targets on HuProt™ are arranged in descending order of the Z-score, the S-score is the difference (also in units of SD's) between the Z-score. S-score therefore represents the relative target specificity of a Monoclonal Antibody to its intended target. A Monoclonal Antibody is considered to specific to its intended target, if the Monoclonal Antibody has an S-score of at least 2.5. For example, if a Monoclonal Antibody binds to protein X with a Z-score of 43 and to protein Y with a Z-score of 14, then the S-score for the binding of that Monoclonal Antibody to protein X is equal to 29.



Immunohistochemistry

Image 3. Formalin-fixed, paraffin-embedded human Small Intestine stained with Monospecific Mouse Monoclonal Antibody (ELN/1981) to Elastin.