

Datasheet for ABIN6939303
anti-Emerin antibody (AA 56-167)

7 Images

[Go to Product page](#)

Overview

Quantity:	100 µg
Target:	Emerin (EMD)
Binding Specificity:	AA 56-167
Reactivity:	Human
Host:	Mouse
Clonality:	Monoclonal
Conjugate:	This Emerin antibody is un-conjugated
Application:	Western Blotting (WB), Immunofluorescence (IF), Immunohistochemistry (IHC), Staining Methods (StM)

Product Details

Immunogen:	Recombinant human Emerin protein fragment (around aa 56-167) (exact sequence is proprietary)
Clone:	EMD-2167
Isotype:	IgG1 kappa
Purification:	Purified by Protein A/G

Target Details

Target:	Emerin (EMD)
Alternative Name:	EMD (EMD Products)

Target Details

Background: Emerin is a member of the nuclear lamina associated protein family. It is ubiquitously expressed and localized to the nuclear membrane in normal cells. Mutations of the gene that encodes emerin result in the X-linked recessive disease Emery-Dreifuss muscular dystrophy (EDMD), which is characterized by slowly progressing contractures, skeletal muscle wasting and cardiomyopathy. Reportedly, lack of Emerin expression is one cause of EDMD. Emerin is involved in the association of the nuclear membrane with the lamina, and is localized specifically to desmosomes and fascia adherens in the heart. Identification of nuclear membrane irregularities with anti-emerin antibody has been reported useful in diagnosing papillary thyroid carcinoma.

Molecular Weight: 37kDa

Gene ID: 2010

UniProt: [P50402](#)

Application Details

Application Notes: Positive Control: K-562, HeLa or Jurkat cells. Kidney or Skin.
Known Application: Western Blot (0.5-2 µg/mL), Immunofluorescence (1-3 µg/mL), Immunohistochemistry (Formalin-fixed) (1-2 µg/mL for 30 min at RT) (Staining of formalin-fixed tissues requires boiling tissue sections in 10 mM citrate buffer, pH 6.0, for 10-20 min followed by cooling at RT for 20 minutes) Optimal dilution for a specific application should be determined.

Restrictions: For Research Use only

Handling

Concentration: 200 µg/mL

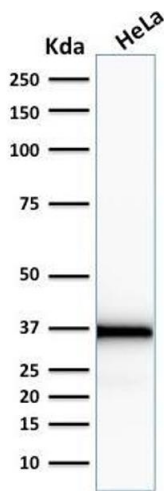
Buffer: 10 mM PBS with 0.05 % BSA & 0.05 % azide.

Preservative: Sodium azide

Precaution of Use: This product contains Sodium azide: a POISONOUS AND HAZARDOUS SUBSTANCE which should be handled by trained staff only.

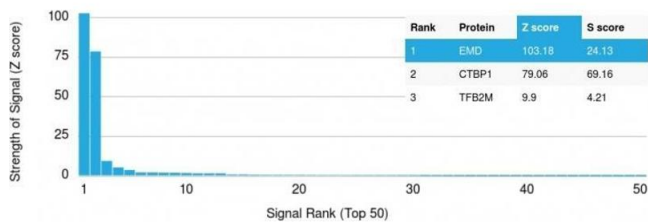
Storage: 4 °C, -80 °C

Storage Comment: Antibody with azide - store at 2 to 8°C. Antibody without azide - store at -20 to -80°C. Antibody is stable for 24 months. Non-hazardous. No MSDS required.



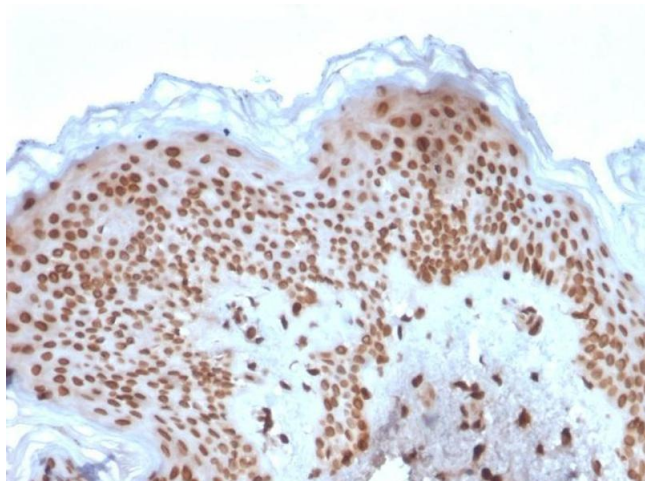
Western Blotting

Image 1. Western Blot Analysis of human HeLa cell lysate using Emerin Mouse Monoclonal Antibody (EMD/2167).



Protein Array

Image 2. Analysis of Protein Array containing more than 19,000 full-length human proteins using Mouse Emerin Monoclonal Antibody (EMD/2167) Z- and S- Score: The Z-score represents the strength of a signal that a monoclonal antibody (MAb) (in combination with a fluorescently-tagged anti-IgG secondary antibody) produces when binding to a particular protein on the HuProtTM array. Z-scores are described in units of standard deviations (SD's) above the mean value of all signals generated on that array. If targets on HuProtTM are arranged in descending order of the Z-score, the S-score is the difference (also in units of SD's) between the Z-score. S-score therefore represents the relative target specificity of a MAb to its intended target. A MAb is considered to specific to its intended target, if the MAb has an S-score of at least 2.5. For example, if a MAb binds to protein X with a Z-score of 43 and to protein Y with a Z-score of 14, then the S-score for the binding of that MAb to protein X is equal to 29.



Immunohistochemistry

Image 3. Formalin-fixed, paraffin-embedded human Basal Cell Carcinoma stained with Emerin Mouse Monoclonal Antibody (EMD/2167).

Please check the [product details page](#) for more images. Overall 7 images are available for ABIN6939303.