

Datasheet for ABIN6939319

anti-ErbB2/Her2 antibody (AA 311-462)**5** Images[Go to Product page](#)

Overview

Quantity:	100 µg
Target:	ErbB2/Her2
Binding Specificity:	AA 311-462
Reactivity:	Human
Host:	Mouse
Clonality:	Monoclonal
Conjugate:	This ErbB2/Her2 antibody is un-conjugated
Application:	Immunohistochemistry (IHC), Staining Methods (StM)

Product Details

Immunogen:	Recombinant human HER-2 protein fragment (around aa 311-462) (exact sequence is proprietary)
Clone:	ERBB2-3078
Isotype:	IgG2b kappa
Specificity:	Recognizes a protein of 185 kDa, which is identified as c-erbB-2/HER-2/neu. Its epitope is localized in the extracellular domain. C-erbB-2/HER-2 is a member of the EGFR family. This MAb is specific and shows minimal cross-reaction with other members of the EGFR-family. Receptors of this family are located on the plasma membrane and consist of an extracellular ligand-binding domain that is connected to a large intracellular domain by a single transmembrane sequence. c-erbB-2/HER-2 protein is over-expressed in a variety of carcinomas especially those of breast and ovary.

Product Details

Purification: Purified by Protein A/G

Target Details

Target: ErbB2/Her2

Alternative Name: ERBB2 ([ErbB2/Her2 Products](#))

Molecular Weight: 185kDa

Gene ID: 2064

UniProt: [P04626](#)

Pathways: [RTK Signaling](#), [Fc-epsilon Receptor Signaling Pathway](#), [EGFR Signaling Pathway](#), [Neurotrophin Signaling Pathway](#), [Skeletal Muscle Fiber Development](#)

Application Details

Application Notes: Positive Control: SKBR-3 cells. Breast cancer tissues.
Known Application: Immunohistochemistry (Formalin-fixed) (1-2 µg/mL for 30 min at RT)(Staining of formalin-fixed tissues requires boiling tissue sections in 10 mM Citrate Buffer, pH 6.0, for 10-20 min followed by cooling at RT for 20 minutes)Optimal dilution for a specific application should be determined.

Restrictions: For Research Use only

Handling

Concentration: 200 µg/mL

Buffer: 10 mM PBS with 0.05 % BSA & 0.05 % azide.

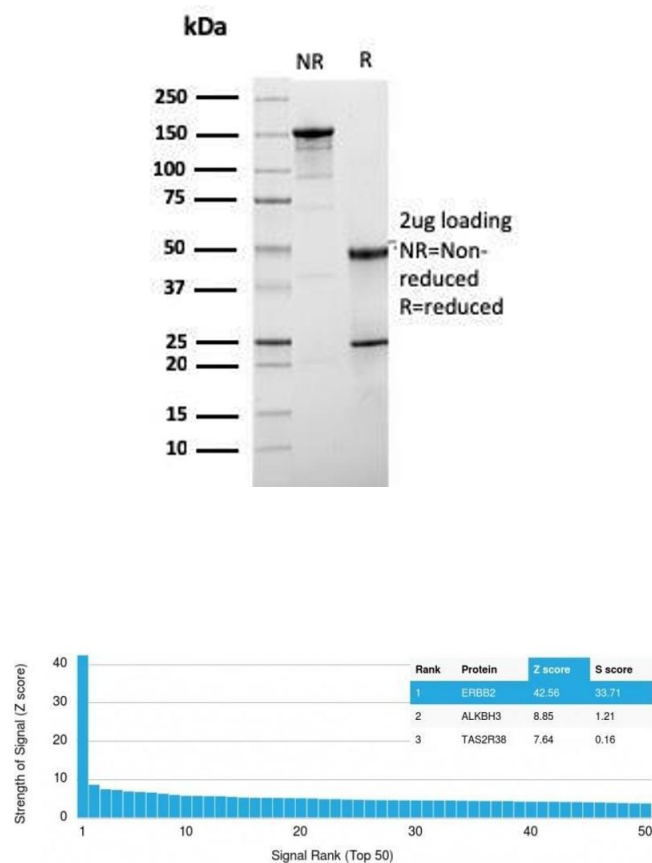
Preservative: Sodium azide

Precaution of Use: This product contains Sodium azide: a POISONOUS AND HAZARDOUS SUBSTANCE which should be handled by trained staff only.

Storage: 4 °C,-80 °C

Storage Comment: Antibody with azide - store at 2 to 8°C. Antibody without azide - store at -20 to -80°C. Antibody is stable for 24 months. Non-hazardous. No MSDS required.

Expiry Date: 24 months

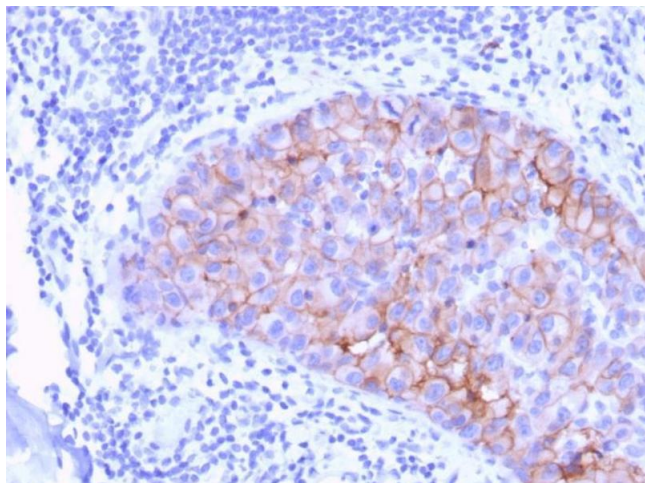


SDS-PAGE

Image 1. SDS-PAGE Analysis Purified HER-2 Mouse Monoclonal Antibody (ERBB2/3078). Confirmation of Purity and Integrity of Antibody.

Protein Array

Image 2. Analysis of Protein Array containing more than 19,000 full-length human proteins using HER-2 Mouse Monoclonal Antibody (ERBB2/3078). Z- and S- Score: The Z-score represents the strength of a signal that a monoclonal antibody (MAb) (in combination with a fluorescently-tagged anti-IgG secondary antibody) produces when binding to a particular protein on the HuProtTM array. Z-scores are described in units of standard deviations (SD's) above the mean value of all signals generated on that array. If targets on HuProtTM are arranged in descending order of the Z-score, the S-score is the difference (also in units of SD's) between the Z-score. S-score therefore represents the relative target specificity of a MAb to its intended target. A MAb is considered to specific to its intended target, if the MAb has an S-score of at least 2.5. For example, if a MAb binds to protein X with a Z-score of 43 and to protein Y with a Z-score of 14, then the S-score for the binding of that MAb to protein X is equal to 29.



Immunohistochemistry

Image 3. Formalin-fixed, paraffin-embedded human Breast Carcinoma stained with HER-2 Mouse Monoclonal Antibody (ERBB2/3078).

Please check the [product details page](#) for more images. Overall 5 images are available for ABIN6939319.