

Datasheet for ABIN6939327

anti-ErbB2/Her2 antibody (Extracellular Domain)

4 Images

[Go to Product page](#)

Overview

Quantity:	100 µg
Target:	ErbB2/Her2
Binding Specificity:	Extracellular Domain
Reactivity:	Human
Host:	Mouse
Clonality:	Monoclonal
Conjugate:	This ErbB2/Her2 antibody is un-conjugated
Application:	ELISA, Immunofluorescence (IF), Flow Cytometry (FACS), Coating (Coat)

Product Details

Immunogen:	Recombinant extracellular domain of human HER-2 protein
Clone:	HRB2-282
Isotype:	IgG1 kappa
Specificity:	Recognizes a protein of 185 kDa, which is identified as c-erbB-2/HER-2/neu. Its epitope is localized in the extracellular domain. C-erbB-2/HER-2 is a member of the EGFR family. This MAb is specific and shows minimal cross-reaction with other members of the EGFR-family. Receptors of this family are located on the plasma membrane and consist of an extracellular ligand-binding domain that is connected to a large intracellular domain by a single transmembrane sequence. c-erbB-2/HER-2 protein is over-expressed in a variety of carcinomas especially those of breast and ovary.
Purification:	Purified by Protein A/G

Target Details

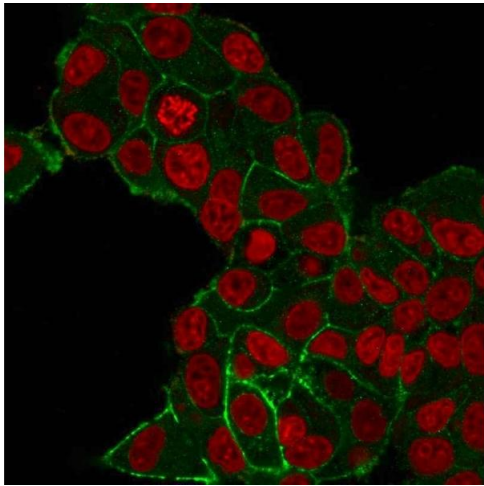
Target:	ErbB2/Her2
Alternative Name:	ERBB2 (ErbB2/Her2 Products)
Molecular Weight:	185kDa
Gene ID:	2064
UniProt:	P04626
Pathways:	RTK Signaling , Fc-epsilon Receptor Signaling Pathway , EGFR Signaling Pathway , Neurotrophin Signaling Pathway , Skeletal Muscle Fiber Development

Application Details

Application Notes:	Positive Control: SKBR-3 cells. Breast cancer tissue. Known Application: ELISA (For coating, order antibody without BSA), Flow Cytometry (0.5-1 µg/million cells), Immunofluorescence (0.5-1 µg/mL), Optimal dilution for a specific application should be determined.
Restrictions:	For Research Use only

Handling

Concentration:	200 µg/mL
Buffer:	10 mM PBS with 0.05 % BSA & 0.05 % azide.
Preservative:	Sodium azide
Precaution of Use:	This product contains Sodium azide: a POISONOUS AND HAZARDOUS SUBSTANCE which should be handled by trained staff only.
Storage:	4 °C, -80 °C
Storage Comment:	Antibody with azide - store at 2 to 8°C. Antibody without azide - store at -20 to -80°C. Antibody is stable for 24 months. Non-hazardous. No MSDS required.
Expiry Date:	24 months

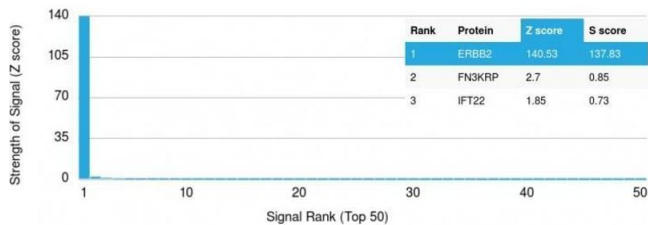


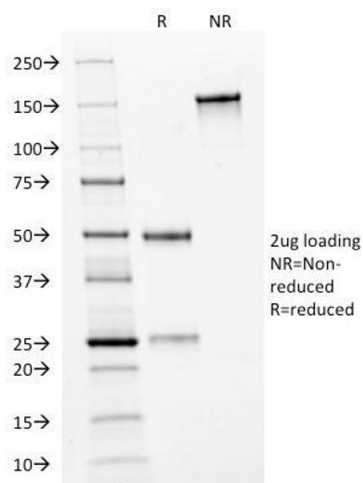
Immunofluorescence

Image 1. Immunofluorescent staining of PFA-fixed MCF-7 cells with HER-2 Monospecific Mouse Monoclonal Antibody (HRB2/282), followed by goat anti-mouse IgG-CF488 (Green). Nuclei are stained with Reddot (Red).

Protein Array

Image 2. Analysis of Protein Array containing more than 19,000 full-length human proteins using HER-2 Mouse Monoclonal Antibody (HRB2/282). Z- and S- Score: The Z-score represents the strength of a signal that a monoclonal antibody (Monoclonal Antibody) (in combination with a fluorescently-tagged anti-IgG secondary antibody) produces when binding to a particular protein on the HuProt™ array. Z-scores are described in units of standard deviations (SD's) above the mean value of all signals generated on that array. If targets on HuProt™ are arranged in descending order of the Z-score, the S-score is the difference (also in units of SD's) between the Z-score. S-score therefore represents the relative target specificity of a Monoclonal Antibody to its intended target. A Monoclonal Antibody is considered to specific to its intended target, if the Monoclonal Antibody has an S-score of at least 2.5. For example, if a Monoclonal Antibody binds to protein X with a Z-score of 43 and to protein Y with a Z-score of 14, then the S-score for the binding of that Monoclonal Antibody to protein X is equal to 29.





SDS-PAGE

Image 3. SDS-PAGE Analysis Purified HER-2 Mouse Monoclonal Antibody (HRB2/282). Confirmation of Integrity and Purity of Antibody.

Please check the [product details page](#) for more images. Overall 4 images are available for ABIN6939327.