

Datasheet for ABIN6939333
anti-ERCC1 antibody (AA 191-281)

5 Images

[Go to Product page](#)

Overview

Quantity:	100 µg
Target:	ERCC1
Binding Specificity:	AA 191-281
Reactivity:	Human
Host:	Mouse
Clonality:	Monoclonal
Conjugate:	This ERCC1 antibody is un-conjugated
Application:	Immunohistochemistry (IHC), Staining Methods (StM)

Product Details

Immunogen:	Recombinant fragment (around aa 191-281) of human ERCC1 protein (exact sequence is proprietary)
Clone:	ERCC1-2318
Isotype:	IgG2b kappa
Specificity:	Recognizes a protein of 110 kDa, identified as Excision Repair Cross Complementing 1 (ERCC1). It is a mammalian nucleotide excision repair (NER) enzyme involved in repair of damaged DNA. ERCC1 is a homologous to RAD10 in <i>Saccharomyces cerevisiae</i> , which is required in mitotic intrachromosomal recombination and repair. ERCC1 is required in repair of cisplatin-induced DNA adducts and ultraviolet (UV)-induced DNA damage. High expression of ERCC1 has been linked to tumor progression in a variety of cancers including non-small cell lung cancer (NSCLC), squamous cell carcinoma of the head, ovarian cancer and esophageal

Product Details

cancer.

Purification: Purified by Protein A/G

Target Details

Target: ERCC1

Alternative Name: ERCC1 ([ERCC1 Products](#))

Molecular Weight: 110kDa

Gene ID: 2067

UniProt: [P07992](#)

Pathways: [DNA Damage Repair](#), [Production of Molecular Mediator of Immune Response](#)

Application Details

Application Notes: Positive Control: HeLa, HepG2 cells. Tonsil or Prostate.
Known Application: Immunohistochemistry (Formalin-fixed) (1-2 µg/mL for 30 minutes at RT)(Staining of formalin-fixed tissues requires boiling tissue sections in 10 mM Tris with 1 mM EDTA, pH 9.0, for 10-20 min followed by cooling at RT for 20 minutes)Optimal dilution for a specific application should be determined.

Restrictions: For Research Use only

Handling

Concentration: 200 µg/mL

Buffer: 10 mM PBS with 0.05 % BSA & 0.05 % azide.

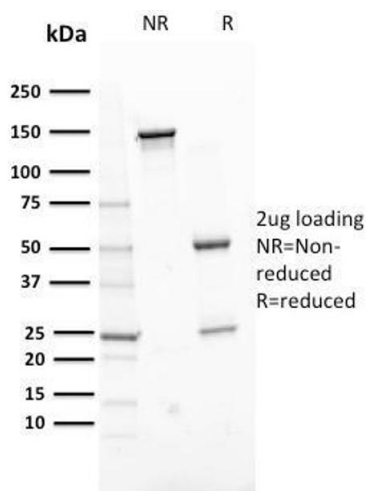
Preservative: Sodium azide

Precaution of Use: This product contains Sodium azide: a POISONOUS AND HAZARDOUS SUBSTANCE which should be handled by trained staff only.

Storage: 4 °C, -80 °C

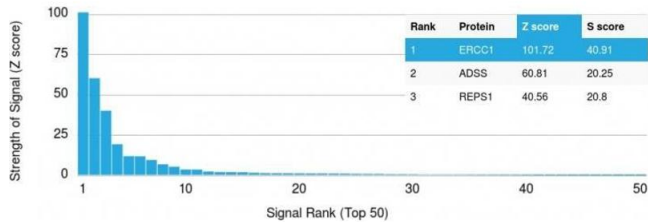
Storage Comment: Antibody with azide - store at 2 to 8°C. Antibody without azide - store at -20 to -80°C. Antibody is stable for 24 months. Non-hazardous. No MSDS required.

Expiry Date: 24 months



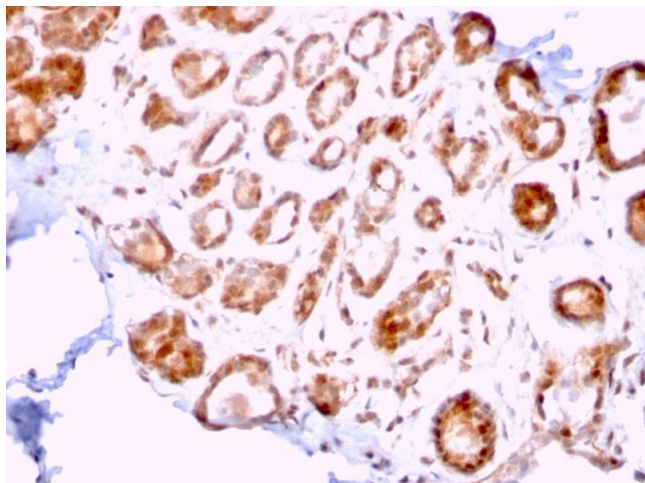
SDS-PAGE

Image 1. SDS-PAGE Analysis Purified ERCC1 Mouse Monoclonal Antibody (ERCC1/2318). Confirmation of Purity and Integrity of Antibody.



Protein Array

Image 2. Analysis of Protein Array containing more than 19,000 full-length human proteins using ERCC1 Mouse Monoclonal Antibody (ERCC1/2318). Z- and S- Score: The Z-score represents the strength of a signal that a monoclonal antibody (MAb) (in combination with a fluorescently-tagged anti-IgG secondary antibody) produces when binding to a particular protein on the HuProtTM array. Z-scores are described in units of standard deviations (SD's) above the mean value of all signals generated on that array. If targets on HuProtTM are arranged in descending order of the Z-score, the S-score is the difference (also in units of SD's) between the Z-score. S-score therefore represents the relative target specificity of a MAb to its intended target. A MAb is considered to specific to its intended target, if the MAb has an S-score of at least 2.5. For example, if a MAb binds to protein X with a Z-score of 43 and to protein Y with a Z-score of 14, then the S-score for the binding of that MAb to protein X is equal to 29.



Immunohistochemistry

Image 3. Formalin-fixed, paraffin-embedded human Breast Carcinoma stained with ERCC1 Mouse Monoclonal Antibody (ERCC1/2318).

Please check the [product details page](#) for more images. Overall 5 images are available for ABIN6939333.