

Datasheet for ABIN6939346

**anti-Estrogen Receptor alpha antibody (AA 129-312)**

6 Images

[Go to Product page](#)

## Overview

Quantity:	100 µg
Target:	Estrogen Receptor alpha (ESR1)
Binding Specificity:	AA 129-312
Reactivity:	Human
Host:	Mouse
Clonality:	Monoclonal
Conjugate:	This Estrogen Receptor alpha antibody is un-conjugated
Application:	Immunohistochemistry (IHC), Immunofluorescence (IF), Flow Cytometry (FACS), Staining Methods (StM)

## Product Details

Immunogen:	Recombinant fragment (around aa129-312) of human ESR1 protein (exact sequence is proprietary)
Clone:	ESR1-3557
Isotype:	IgG1 kappa
Specificity:	This monoclonal antibody is specific to estrogen receptor alpha (ER alpha) and shows minimal cross-reaction with other members of the family. ER is an important regulator of growth and differentiation in the mammary gland. Presence of ER in breast tumors indicates an increased likelihood of response to anti-estrogen (e.g. tamoxifen) therapy. It strongly stains nuclei of epithelial cells in breast carcinomas.
Purification:	Purified by Protein A/G

## Target Details

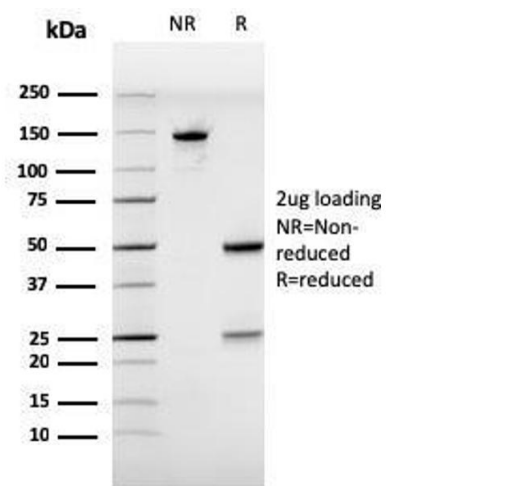
Target:	Estrogen Receptor alpha (ESR1)
Alternative Name:	ESR1 ( <a href="#">ESR1 Products</a> )
Molecular Weight:	~67kDa
Gene ID:	2099
UniProt:	<a href="#">P03372</a>
Pathways:	<a href="#">Nuclear Receptor Transcription Pathway</a> , <a href="#">EGFR Signaling Pathway</a> , <a href="#">Retinoic Acid Receptor Signaling Pathway</a> , <a href="#">Intracellular Steroid Hormone Receptor Signaling Pathway</a> , <a href="#">Steroid Hormone Mediated Signaling Pathway</a> , <a href="#">Ribonucleoprotein Complex Subunit Organization</a> , <a href="#">Ribosome Assembly</a>

## Application Details

Application Notes:	Positive Control: MCF-7 cells (IF). Human breast or endometrial carcinoma (IHC). Known Application: Immunofluorescence (1-2 µg/mL), Flow Cytometry (1-2 µg/million cells), Immunohistochemistry (Formalin-fixed) (1-2 µg/mL for 30 minutes at RT), (Staining of formalin-fixed tissues requires boiling tissue sections in 10 mM citrate buffer, pH 6.0, for 10-20 min followed by cooling at RT for 20 minutes), Optimal dilution for a specific application should be determined.
Restrictions:	For Research Use only

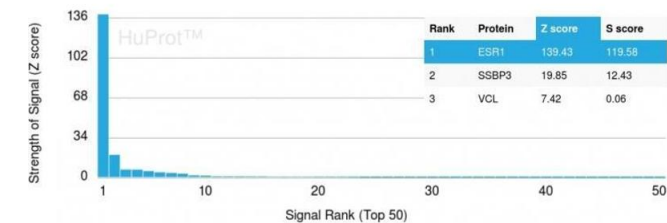
## Handling

Concentration:	200 µg/mL
Buffer:	10 mM PBS with 0.05 % BSA & 0.05 % azide.
Preservative:	Sodium azide
Precaution of Use:	This product contains Sodium azide: a POISONOUS AND HAZARDOUS SUBSTANCE which should be handled by trained staff only.
Storage:	4 °C
Storage Comment:	Store at 2 to 8°C. Antibody is stable for 24 months. Non-hazardous. No MSDS required.
Expiry Date:	24 months



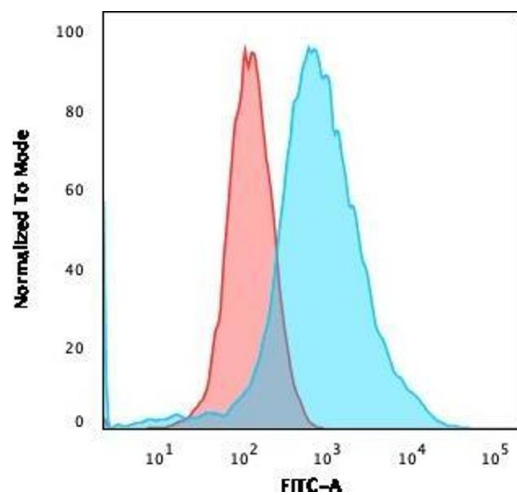
SDS-PAGE

**Image 1.** SDS-PAGE Analysis Purified Estrogen Receptor alpha Mouse Monoclonal Antibody (ESR1/3557). Confirmation of Integrity and Purity of Antibody.



Protein Array

**Image 2.** Analysis of Protein Array containing more than 19,000 full-length human proteins using Estrogen Receptor alpha Mouse Monoclonal Antibody (ESR1/3557) Z- and S-Score: The Z-score represents the strength of a signal that a monoclonal antibody (MAb) (in combination with a fluorescently-tagged anti-IgG secondary antibody) produces when binding to a particular protein on the HuProt™ array. Z-scores are described in units of standard deviations (SDs) above the mean value of all signals generated on that array. If targets on HuProt™ are arranged in descending order of the Z-score, the S-score is the difference (also in units of SDs) between the Z-score. S-score therefore represents the relative target specificity of a MAb to its intended target. A MAb is considered to specific to its intended target, if the MAb has an S-score of at least 2.5. For example, if a MAb binds to protein X with a Z-score of 43 and to protein Y with a Z-score of 14, then the S-score for the binding of that MAb to protein X is equal to 29.



### Flow Cytometry

**Image 3.** Flow Cytometric Analysis of MCF-7 cells using Estrogen Receptor alpha Mouse Monoclonal Antibody (ESR1/3557) followed by goat anti-Mouse IgG-CF488 (Blue); Isotype Control (Red).

Please check the [product details page](#) for more images. Overall 6 images are available for ABIN6939346.