

Datasheet for ABIN6939354
anti-ETS1 antibody (AA 137-230)



[Go to Product page](#)

2 Images

Overview

Quantity:	100 µg
Target:	ETS1
Binding Specificity:	AA 137-230
Reactivity:	Human
Host:	Mouse
Clonality:	Monoclonal
Conjugate:	This ETS1 antibody is un-conjugated
Application:	ELISA, Coating (Coat)

Product Details

Immunogen:	Recombinant human ETS1 fragment (around aa137-230) (exact sequence is proprietary)
Clone:	ETS1-1801
Isotype:	IgG2b kappa
Purification:	Purified by Protein A/G

Target Details

Target:	ETS1
Alternative Name:	ETS1 (ETS1 Products)
Background:	ETS1 proto-oncogene is an important transcription factor that plays a role in cell proliferation and differentiation. ETS1 is related to the growth of carcinoma cells by its regulation of the

Target Details

transcription of matrix metalloproteinases and urokinase-type plasminogen activator. The processes of tumor invasion and metastasis depend on the increased proteolytic activity of the invading tumor cells that may involve matrix metalloproteinases, cathepsins B and D and plasminogen activator in the metastatic cascade. ETS1 is preferentially expressed in lymphoid cells, where it is essential for the maintenance of the normal pool of resting T and B cells. ETS1 expression level and distribution are differentially controlled in resting, activated and apoptotic lymphocytes.

Molecular Weight: 54kDa

Gene ID: 2113

UniProt: [P14921](#)

Application Details

Application Notes: Positive Control: HepG2 and HeLa cells. Tonsil, Skin, Pancreas, Kidney and Lymphoma.
Known Application: ELISA (Use Ab at 2-4 µg/mL for coating) (Order Ab without BSA), Optimal dilution for a specific application should be determined.

Restrictions: For Research Use only

Handling

Concentration: 200 µg/mL

Buffer: 10 mM PBS with 0.05 % BSA & 0.05 % azide.

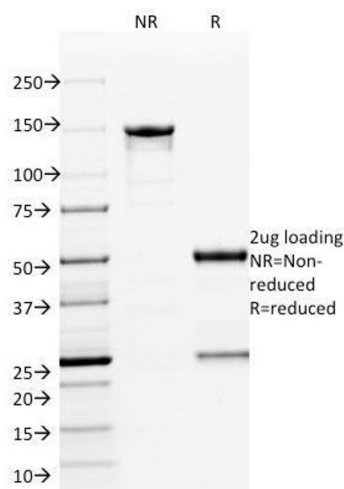
Preservative: Sodium azide

Precaution of Use: This product contains Sodium azide: a POISONOUS AND HAZARDOUS SUBSTANCE which should be handled by trained staff only.

Storage: 4 °C, -80 °C

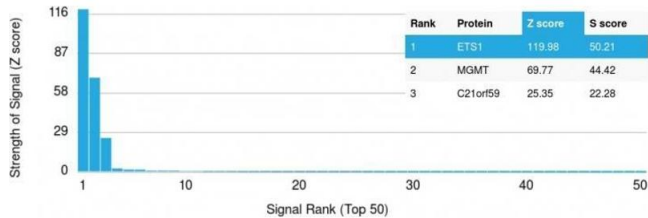
Storage Comment: Antibody with azide - store at 2 to 8°C. Antibody without azide - store at -20 to -80°C. Antibody is stable for 24 months. Non-hazardous. No MSDS required.

Expiry Date: 24 months



SDS-PAGE

Image 1. SDS-PAGE Analysis Purified ETS1 Mouse Monoclonal Antibody (ETS1/1801). Confirmation of Integrity and Purity of Antibody.



Protein Array

Image 2. Analysis of Protein Array containing more than 19,000 full-length human proteins using ETS1 Mouse Monoclonal Antibody (ETS1/1801) Z- and S- Score: The Z-score represents the strength of a signal that a monoclonal antibody (Monoclonal Antibody) (in combination with a fluorescently-tagged anti-IgG secondary antibody) produces when binding to a particular protein on the HuProt™ array. Z-scores are described in units of standard deviations (SD's) above the mean value of all signals generated on that array. If targets on HuProt™ are arranged in descending order of the Z-score, the S-score is the difference (also in units of SD's) between the Z-score. S-score therefore represents the relative target specificity of a Monoclonal Antibody to its intended target. A Monoclonal Antibody is considered to specific to its intended target, if the Monoclonal Antibody has an S-score of at least 2.5. For example, if a Monoclonal Antibody binds to protein X with a Z-score of 43 and to protein Y with a Z-score of 14, then the S-score for the binding of that Monoclonal Antibody to protein X is equal to 29.