



Datasheet for ABIN6939359
anti-Albumin antibody



[Go to Product page](#)

5 Images

Overview

Quantity:	100 µg
Target:	Albumin (ALB)
Reactivity:	Human
Host:	Mouse
Clonality:	Monoclonal
Conjugate:	This Albumin antibody is un-conjugated
Application:	ELISA, Western Blotting (WB), Immunofluorescence (IF), Flow Cytometry (FACS), Coating (Coat)

Product Details

Immunogen:	Recombinant full-length human ALB protein
Clone:	ALB-2356
Isotype:	IgG2a kappa
Specificity:	This MAb is Monospecific to albumin and shows no significant cross-reaction with other human proteins. Albumin is a soluble, monomeric protein, which comprises about one half of the blood serum protein. Albumin functions primarily as a carrier protein for steroids, fatty acids, and thyroid hormones and plays a role in stabilizing extracellular fluid volume. Albumin is synthesized in the liver as prealbumin, which has an N-terminal peptide that is removed before the nascent protein is released from the rough endoplasmic reticulum. The product, prealbumin, is in turn cleaved in the Golgi vesicles to produce the secreted form of albumin.
Purification:	Purified by Protein A/G

Target Details

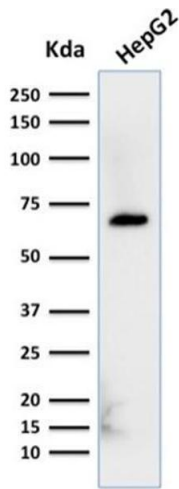
Target:	Albumin (ALB)
Alternative Name:	ALB (ALB Products)
Molecular Weight:	66kDa
Gene ID:	213
UniProt:	P02768
Pathways:	Lipid Metabolism

Application Details

Application Notes:	Positive Control: HePG2 cells. Human serum. Liver or Hepatocellular Carcinoma. Known Application: ELISA (For coating, order Ab without BSA),Flow Cytometry (1-2 µg/million cells),Immunofluorescence (2-4 µg/mL), Western Blot (1-2 µg/mL),Optimal dilution for a specific application should be determined.
Restrictions:	For Research Use only

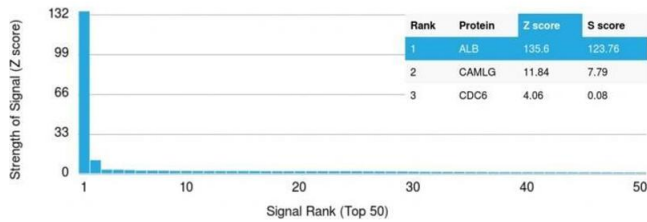
Handling

Concentration:	200 µg/mL
Buffer:	10 mM PBS with 0.05 % BSA & 0.05 % azide.
Preservative:	Sodium azide
Precaution of Use:	This product contains Sodium azide: a POISONOUS AND HAZARDOUS SUBSTANCE which should be handled by trained staff only.
Storage:	4 °C,-80 °C
Storage Comment:	Antibody with azide - store at 2 to 8°C. Antibody without azide - store at -20 to -80°C. Antibody is stable for 24 months. Non-hazardous. No MSDS required.
Expiry Date:	24 months



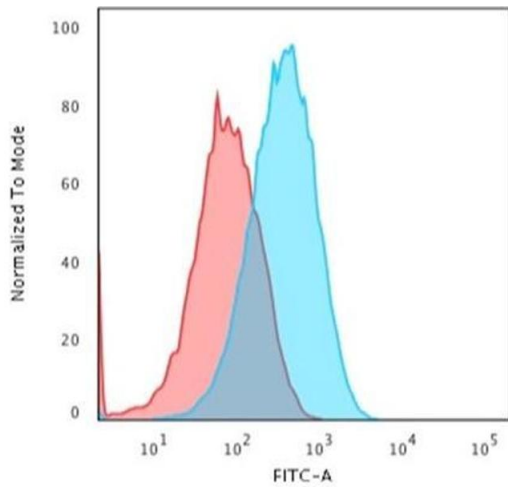
Western Blotting

Image 1. Western Blot Analysis of HepG2 cell lysate using Albumin Monospecific Mouse Monoclonal Antibody (ALB/2356).



Protein Array

Image 2. Analysis of Protein Array containing more than 19,000 full-length human proteins using Albumin Monospecific Mouse Monoclonal Antibody (ALB/2356). Z- and S- Score: The Z-score represents the strength of a signal that a monoclonal antibody (MAb) (in combination with a fluorescently-tagged anti-IgG secondary antibody) produces when binding to a particular protein on the HuProt™ array. Z-scores are described in units of standard deviations (SDs) above the mean value of all signals generated on that array. If targets on HuProt™ are arranged in descending order of the Z-score, the S-score is the difference (also in units of SDs) between the Z-score. S-score therefore represents the relative target specificity of a MAb to its intended target. A MAb is considered to specific to its intended target, if the MAb has an S-score of at least 2.5. For example, if a MAb binds to protein X with a Z-score of 43 and to protein Y with a Z-score of 14, then the S-score for the binding of that MAb to protein X is equal to 29.



Flow Cytometry

Image 3. Flow Cytometric Analysis of paraformaldehyde-fixed HepG2 cells using Albumin Monospecific Mouse Monoclonal Antibody (ALB/2356) followed by goat anti-Mouse IgG-CF488 (Blue); Isotype Control (Red).

Please check the [product details page](#) for more images. Overall 5 images are available for ABIN6939359.