

Datasheet for ABIN6939366

anti-ALDH1A1 antibody (AA 315-434)

5 Images

[Go to Product page](#)

Overview

| | |
|----------------------|---|
| Quantity: | 100 µg |
| Target: | ALDH1A1 |
| Binding Specificity: | AA 315-434 |
| Reactivity: | Human |
| Host: | Mouse |
| Clonality: | Monoclonal |
| Conjugate: | This ALDH1A1 antibody is un-conjugated |
| Application: | Western Blotting (WB), Immunohistochemistry (IHC), Staining Methods (StM) |

Product Details

| | |
|---------------|--|
| Immunogen: | Recombinant fragment (around aa 315-434) of human ALDH1A1 protein (exact sequence is proprietary). |
| Clone: | ALDH1A1-1381 |
| Isotype: | IgG1 kappa |
| Purification: | Purified by Protein A/G |

Target Details

| | |
|-------------------|---|
| Target: | ALDH1A1 |
| Alternative Name: | ALDH1A1 (ALDH1A1 Products) |
| Background: | ALDH1A1 belongs to the ALDH enzymes, a family of evolutionarily conserved enzymes |

Target Details

comprised of 19 isoforms that are localized in the cytoplasm, mitochondria or nucleus. ALDH1A1 is predominantly expressed in the epithelium of testis, brain, eye, liver, kidney, as well as neural and hematopoietic stem cells. Reportedly, high ALDH1A1 expression is found in solitary fibrous tumor (SFT) and hemangiopericytoma (HPC), compared to meningiomas and synovial sarcomas. In combination with CD34, ALDH1A1 may be useful for the differentiation among SFT, HPC, meningioma, and synovial sarcoma.

Molecular Weight: 56kDa

Gene ID: 216

UniProt: [P00352](#)

Pathways: [Dopaminergic Neurogenesis](#)

Application Details

Application Notes: Positive Control: Liver, K562, Lung, HepG2 or A549 cells. Colon or Testicular Carcinoma.
Known Application: Western Blot (1-2 µg/mL), Immunohistochemistry (Formalin-fixed) (1-2 µg/mL for 30 min at RT)(Staining of formalin-fixed tissues requires boiling tissue sections in 10 mM Citrate Buffer, pH 6.0, for 10-20 min followed by cooling at RT for 20 minutes)Optimal dilution for a specific application should be determined.

Restrictions: For Research Use only

Handling

Concentration: 200 µg/mL

Buffer: 10 mM PBS with 0.05 % BSA & 0.05 % azide.

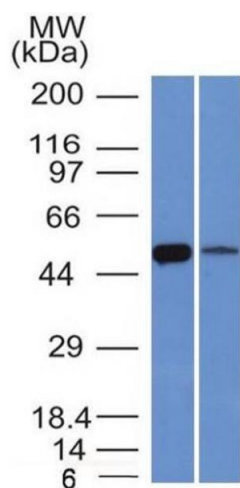
Preservative: Sodium azide

Precaution of Use: This product contains Sodium azide: a POISONOUS AND HAZARDOUS SUBSTANCE which should be handled by trained staff only.

Storage: 4 °C, -80 °C

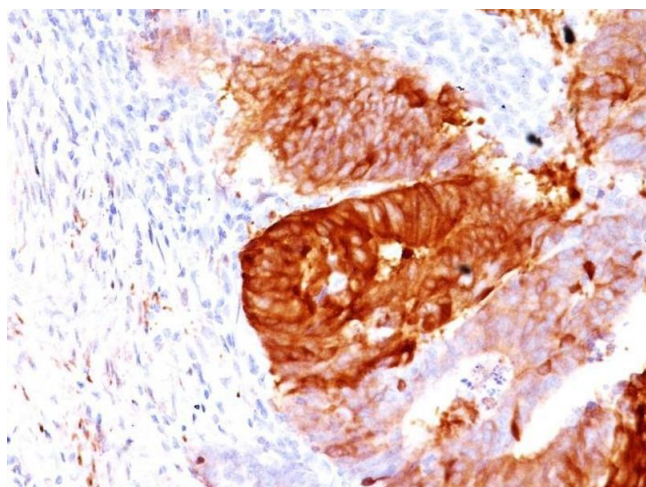
Storage Comment: Antibody with azide - store at 2 to 8°C. Antibody without azide - store at -20 to -80°C. Antibody is stable for 24 months. Non-hazardous. No MSDS required.

Expiry Date: 24 months



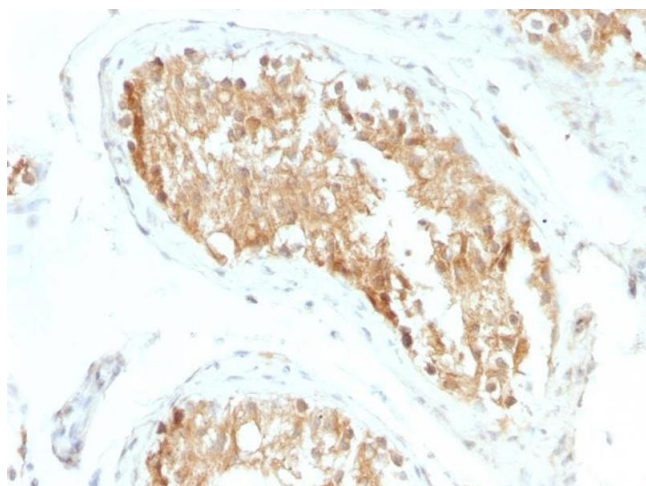
Western Blotting

Image 1. Western Blot of K562 and Lung lysate ALDH1A1 Mouse Monoclonal Antibody (ALDH1A1/1381).



Immunohistochemistry

Image 2. Formalin-fixed, paraffin-embedded human Colon Carcinoma stained with ALDH1A1 Mouse Monoclonal Antibody (ALDH1A1/1381).



Immunohistochemistry

Image 3. Formalin-fixed, paraffin-embedded human Testicular Carcinoma stained with ALDH1A1 Mouse Monoclonal Antibody (ALDH1A1/1381).

Please check the [product details page](#) for more images. Overall 5 images are available for ABIN6939366.