

Datasheet for ABIN6939402

anti-MLANA antibody

2 Images

[Go to Product page](#)

Overview

Quantity:	100 µg
Target:	MLANA
Reactivity:	Human, Mouse, Rat
Host:	Rabbit
Clonality:	Polyclonal
Conjugate:	This MLANA antibody is un-conjugated
Application:	Immunostaining (IS), Immunohistochemistry (IHC), Staining Methods (StM)

Product Details

Immunogen:	Recombinant human MLANA protein
Isotype:	IgG
Specificity:	<p>This antibody recognizes a protein doublet of 20-22 kDa, identified as MART-1 (Melanoma Antigen Recognized by T cells 1) or Melan-A. MART-1 is a newly identified melanocyte differentiation antigen recognized by autologous cytotoxic T lymphocytes. Seven other melanoma associated antigens recognized by autologous cytotoxic T cells include MAGE-1, MAGE-3, tyrosinase, gp100, gp75, BAGE-1, and GAGE-1. Subcellular fractionation shows that MART-1 is present in melanosomes and endoplasmic reticulum. This antibody labels melanomas and other tumors showing melanocytic differentiation. It is also a useful positive-marker for angiomyolipomas. It does not stain tumor cells of epithelial, lymphoid, glial, or mesenchymal origin.</p>
Purification:	Purified by Protein A/G

Target Details

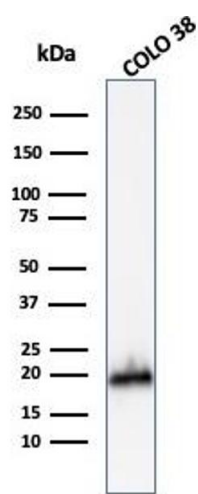
Target:	MLANA
Alternative Name:	MLANA (MLANA Products)
Molecular Weight:	20-22kDa (doublet)
Gene ID:	2315
UniProt:	Q16655

Application Details

Application Notes:	Positive Control: SK-MEL-13 and SK-MEL-19 melanoma cell lines. Human melanoma tissues. Known Application: Immunohistochemistry (Formalin-fixed) (0.5-1 µg/mL for 30 minutes at RT)(Staining of formalin-fixed tissues is enhanced by boiling tissue sections in 10 mM Citrate Buffer, pH 6.0, for 10-20 min followed by cooling at RT for 20 minutes)Optimal dilution for a specific application should be determined.
Restrictions:	For Research Use only

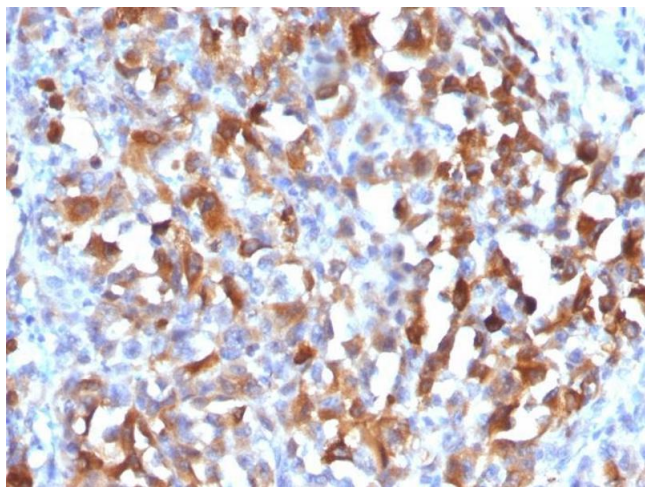
Handling

Concentration:	200 µg/mL
Buffer:	10 mM PBS with 0.05 % BSA & 0.05 % azide.
Preservative:	Sodium azide
Precaution of Use:	This product contains Sodium azide: a POISONOUS AND HAZARDOUS SUBSTANCE which should be handled by trained staff only.
Storage:	4 °C,-80 °C
Storage Comment:	Antibody with azide - store at 2 to 8°C. Antibody without azide - store at -20 to -80°C. Antibody is stable for 24 months. Non-hazardous. No MSDS required.
Expiry Date:	24 months



Western Blotting

Image 1. Western Blot Analysis of COLO-38 cell lysate using MART-1 Rabbit Polyclonal Antibody.



Immunohistochemistry

Image 2. Formalin-fixed, paraffin-embedded human Melanoma stained with MART-1 Rabbit Polyclonal Antibody.