

Datasheet for ABIN6939418
anti-Elastase 3B antibody (AA 82-238)[Go to Product page](#)

5 Images

Overview

Quantity:	100 µg
Target:	Elastase 3B (ELA3B)
Binding Specificity:	AA 82-238
Reactivity:	Human, Mouse, Rat
Host:	Mouse
Clonality:	Monoclonal
Conjugate:	This Elastase 3B antibody is un-conjugated
Application:	ELISA, Western Blotting (WB), Coating (Coat), Immunohistochemistry (IHC), Staining Methods (StM)

Product Details

Immunogen:	Recombinant human CELA3B protein fragment (around aa 82-238) (exact sequence is proprietary)
Clone:	CELA3B-1257
Isotype:	IgG1 kappa
Specificity:	This MAb recognizes a protein of ~30 kDa, identified as CELA3B (Chymotrypsin like elastase family member 3B). Elastases form a subfamily of serine proteases that hydrolyze many proteins in addition to elastin. Humans have six elastase genes which encode the structurally similar proteins elastase 1, 2, 2A, 2B, 3A, and 3B. Unlike other elastases, elastase 3B has little elastolytic activity. Like most of the human elastases, elastase 3B is secreted from the pancreas as a zymogen and, like other serine proteases such as trypsin, chymotrypsin and

Product Details

kallikrein, it has a digestive function in the intestine. Elastase 3B preferentially cleaves proteins after alanine residues. Elastase 3B may also function in the intestinal transport and metabolism of cholesterol. Both elastase 3A and elastase 3B have been referred to as protease E and as elastase 1, and excretion of this protein in fecal material is frequently used as a measure of pancreatic function in clinical assays.

Purification: Purified by Protein A/G

Target Details

Target: Elastase 3B (ELA3B)

Alternative Name: CELA3B ([ELA3B Products](#))

Molecular Weight: ~17kDa

Gene ID: 23436

UniProt: [P08861](#)

Application Details

Application Notes: Positive Control: Panc-28 or PANC1 cells. Pancreas.
Known Application: ELISA (Use Ab at 2-4 µg/mL for coating) (Order Ab without BSA) Western Blot (1-2 µg/mL), Immunohistochemistry (Formalin-fixed) (1-2 µg/mL for 30 minutes at RT) (Staining of formalin-fixed tissues requires boiling tissue sections in 10 mM Tris with 1 mM EDTA, pH 9.0, for 10-20 min followed by cooling at RT for 20 minutes) Optimal dilution for a specific application should be determined.

Restrictions: For Research Use only

Handling

Concentration: 200 µg/mL

Buffer: 10 mM PBS with 0.05 % BSA & 0.05 % azide.

Preservative: Sodium azide

Precaution of Use: This product contains Sodium azide: a POISONOUS AND HAZARDOUS SUBSTANCE which should be handled by trained staff only.

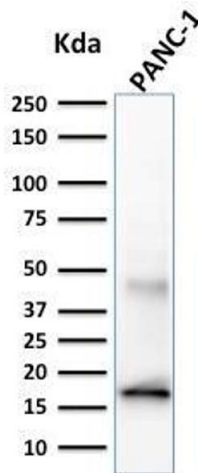
Storage: 4 °C, -80 °C

Storage Comment: Antibody with azide - store at 2 to 8°C. Antibody without azide - store at -20 to -80°C. Antibody

is stable for 24 months. Non-hazardous. No MSDS required.

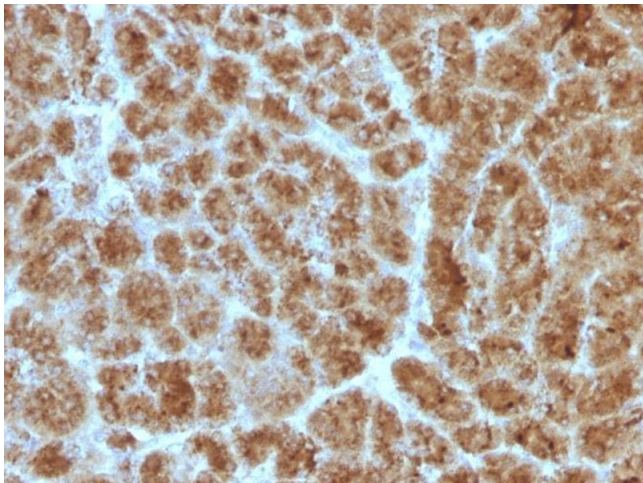
Expiry Date: 24 months

Images



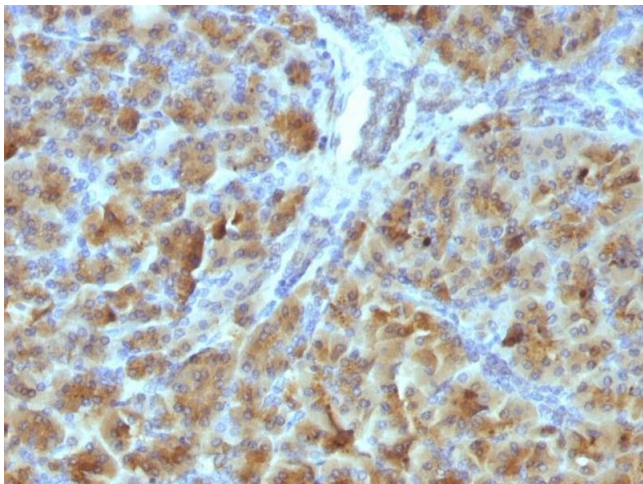
Western Blotting

Image 1. Western Blot Analysis of PANC-1 cell lysate using CELA3B Mouse Monoclonal Antibody (CELA3B/1257).



Immunohistochemistry

Image 2. Formalin-fixed, paraffin-embedded human Pancreas stained with CELA3B Mouse Monoclonal Antibody (CELA3B/1257)



Immunohistochemistry

Image 3. Formalin-fixed, paraffin-embedded Mouse Pancreas stained with CELA3B Mouse Monoclonal Antibody (CELA3B/1257).

Please check the [product details page](#) for more images. Overall 5 images are available for ABIN6939418.