

Datasheet for ABIN6939428

Recombinant anti-PSMA antibody (AA 232-433)[Go to Product page](#)**2** Images

Overview

Quantity:	100 µg
Target:	PSMA (FOLH1)
Binding Specificity:	AA 232-433
Reactivity:	Human
Host:	Rabbit
Antibody Type:	Recombinant Antibody
Clonality:	Monoclonal
Conjugate:	This PSMA antibody is un-conjugated
Application:	Immunohistochemistry (IHC), Staining Methods (StM)

Product Details

Immunogen:	Recombinant human FOLH1 protein fragment (around aa 232-433) (exact sequence is proprietary)
Clone:	FOLH1-3149R
Isotype:	IgG
Purification:	Purified by Protein A/G

Target Details

Target:	PSMA (FOLH1)
Alternative Name:	FOLH1 (FOLH1 Products)

Target Details

Background: Folate hydrolase 1 (FOLH1), also known as Prostate-specific membrane antigen (PSMA), is a type II transmembrane glycoprotein belonging to the M28 peptidase family. FOLH1 has two enzymatic activities, one as a prostate-specific integral membrane folate hydrolase and the other as a carboxypeptidase. In the prostate the protein is up-regulated in cancerous cells and is used as an effective diagnostic and prognostic indicator of prostate cancer.

Molecular Weight: 100kDa

Gene ID: 2346

UniProt: [Q04609](#)

Application Details

Application Notes: Positive Control: LNCap or HepG2 cells. Prostate Carcinoma.
Known Application: Immunohistochemistry (Formalin-fixed) (1-2 µg/mL for 30 minutes at RT)(Staining of formalin-fixed tissues requires boiling tissue sections in 10 mM Citrate Buffer, pH 6.0, for 10-20 min followed by cooling at RT for 20 minutes)Optimal dilution for a specific application should be determined.

Restrictions: For Research Use only

Handling

Concentration: 200 µg/mL

Buffer: 10 mM PBS with 0.05 % BSA & 0.05 % azide.

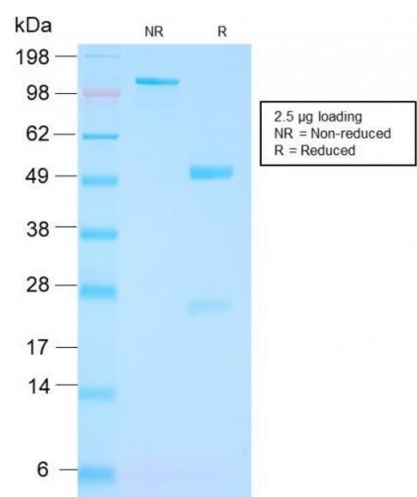
Preservative: Sodium azide

Precaution of Use: This product contains Sodium azide: a POISONOUS AND HAZARDOUS SUBSTANCE which should be handled by trained staff only.

Storage: 4 °C,-80 °C

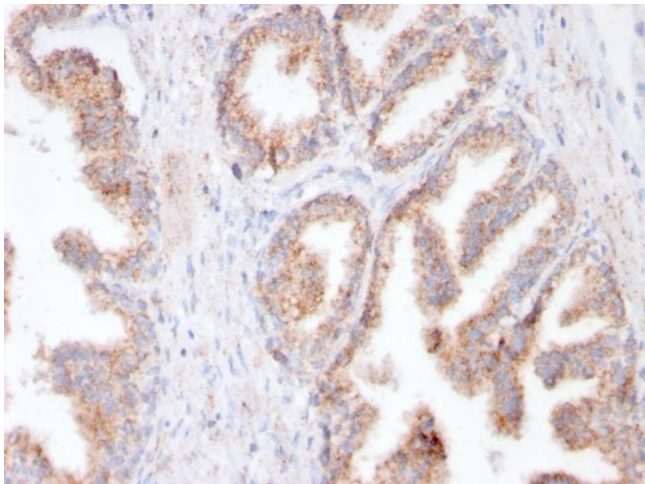
Storage Comment: Antibody with azide - store at 2 to 8°C. Antibody without azide - store at -20 to -80°C. Antibody is stable for 24 months. Non-hazardous. No MSDS required.

Expiry Date: 24 months



SDS-PAGE

Image 1. SDS-PAGE Analysis Purified FOLH1 Rabbit Recombinant Monoclonal Antibody (FOLH1/3149R). Confirmation of Purity and Integrity of Antibody.



Immunohistochemistry

Image 2. Formalin-fixed, paraffin-embedded human Prostate Carcinoma stained with FOLH1 Rabbit Recombinant Monoclonal Antibody (FOLH1/3149R).