



Datasheet for ABIN6939451
anti-PLAP antibody



[Go to Product page](#)

3 Images

Overview

| | |
|--------------|--|
| Quantity: | 100 µg |
| Target: | PLAP (ALPP) |
| Reactivity: | Human |
| Host: | Mouse |
| Clonality: | Monoclonal |
| Conjugate: | This PLAP antibody is un-conjugated |
| Application: | Immunohistochemistry (IHC), Immunostaining (Ist) |

Product Details

| | |
|--------------|--|
| Immunogen: | Recombinant full-length human ALPP protein |
| Clone: | ALP-870 |
| Isotype: | IgG |
| Specificity: | Reacts with a 70 kDa membrane-bound isozyme (Regan and Nagao type) of Placental Alkaline Phosphatase (PLAP) occurring in the placenta during the 3rd trimester of gestation. It is highly specific for PLAP and shows no cross-reaction with other isozymes of alkaline phosphatase. Anti-PLAP reacts with germ cell tumors and can discriminate between these and other neoplasms. Somatic neoplasms e.g. breast, gastrointestinal, prostatic, and urinary cancers may also immunoreact with antibodies to PLAP. Anti-PLAP positivity in conjunction with anti-keratin negativity favors seminoma over carcinoma. Germ cell tumors are usually anti-keratin positive, but they regularly fail to stain with anti-EMA, whereas most carcinomas stain with anti-EMA. Anti-PLAP has been useful in the diagnosis of gestational trophoblastic disease. |

Product Details

Purification: Purified by Protein A/G

Target Details

Target: PLAP (ALPP)

Alternative Name: ALPP ([ALPP Products](#))

Molecular Weight: 70kDa

Gene ID: 250

UniProt: [P05187](#)

Application Details

Application Notes: Positive Control: HepG2 cells. Placenta or seminoma.
Known Application: Immunohistochemistry (Formalin-fixed) (0.25-0.5 µg/mL for 30 minutes at RT)(No special pretreatment is required for the immunohistochemical staining of formalin-fixed tissues.)Optimal dilution for a specific application should be determined.

Restrictions: For Research Use only

Handling

Concentration: 200 µg/mL

Buffer: 10 mM PBS with 0.05 % BSA & 0.05 % azide.

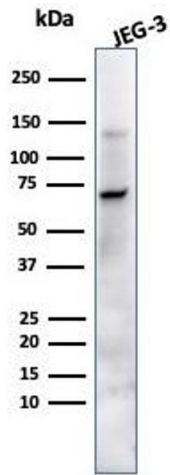
Preservative: Sodium azide

Precaution of Use: This product contains Sodium azide: a POISONOUS AND HAZARDOUS SUBSTANCE which should be handled by trained staff only.

Storage: 4 °C,-80 °C

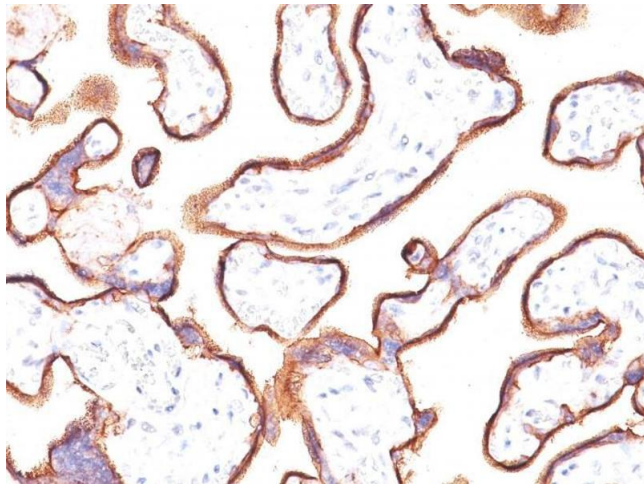
Storage Comment: Antibody with azide - store at 2 to 8°C. Antibody without azide - store at -20 to -80°C. Antibody is stable for 24 months. Non-hazardous. No MSDS required.

Expiry Date: 24 months



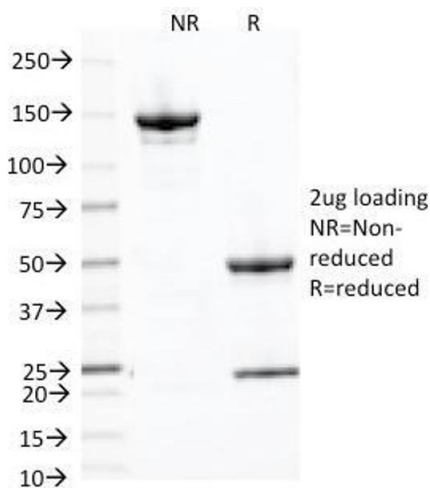
Western Blotting

Image 1. Western Blot Analysis of JEG-3 cell lysate using PLAP Mouse Monoclonal Antibody (ALP/870).



Immunohistochemistry

Image 2. Formalin-fixed, paraffin-embedded human placenta stained with PLAP Mouse Monoclonal Antibody (ALP/870).



SDS-PAGE

Image 3. SDS-PAGE Analysis Purified PLAP Mouse Monoclonal Antibody (ALP/870). Confirmation of Integrity and Purity of Antibody.