

Datasheet for ABIN6939457

**Recombinant anti-PLAP antibody****3** Images[Go to Product page](#)

## Overview

Quantity:	100 µg
Target:	PLAP (ALPP)
Reactivity:	Human
Host:	Rabbit
Antibody Type:	Recombinant Antibody
Clonality:	Monoclonal
Conjugate:	This PLAP antibody is un-conjugated
Application:	Immunohistochemistry (IHC), Immunostaining (Ist)

## Product Details

Immunogen:	Recombinant full-length human ALPP protein
Clone:	ALPP-2899R
Isotype:	IgG
Specificity:	<p>Reacts with a 70 kDa membrane-bound isozyme (Regan and Nagao type) of Placental Alkaline Phosphatase (PLAP) occurring in the placenta during the 3rd trimester of gestation. It is highly specific for PLAP and shows no cross-reaction with other isozymes of alkaline phosphatase. Anti-PLAP reacts with germ cell tumors and can discriminate between these and other neoplasms. Somatic neoplasms e.g. breast, gastrointestinal, prostatic, and urinary cancers may also immunoreact with antibodies to PLAP. Anti-PLAP positivity in conjunction with anti-keratin negativity favors seminoma over carcinoma. Germ cell tumors are usually anti-keratin positive, but they regularly fail to stain with anti-EMA, whereas most carcinomas stain with anti-EMA.</p>

## Product Details

Anti-PLAP has been useful in the diagnosis of gestational trophoblastic disease.

Purification: Purified by Protein A/G

## Target Details

Target: PLAP (ALPP)

Alternative Name: ALPP ([ALPP Products](#))

Molecular Weight: 70kDa

Gene ID: 250

UniProt: [P05187](#)

## Application Details

Application Notes: Positive Control: HepG2 cells. Placenta or seminoma.  
Known Application: Immunohistochemistry (Formalin-fixed) (0.25-0.5 µg/mL for 30 minutes at RT)(No special pretreatment is required for the immunohistochemical staining of formalin-fixed tissues.)Optimal dilution for a specific application should be determined.

Restrictions: For Research Use only

## Handling

Concentration: 200 µg/mL

Buffer: 10 mM PBS with 0.05 % BSA & 0.05 % azide.

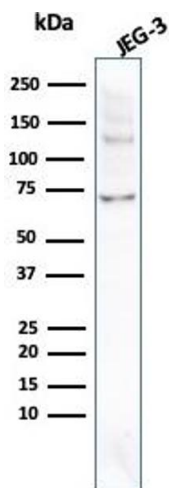
Preservative: Sodium azide

Precaution of Use: This product contains Sodium azide: a POISONOUS AND HAZARDOUS SUBSTANCE which should be handled by trained staff only.

Storage: 4 °C, -80 °C

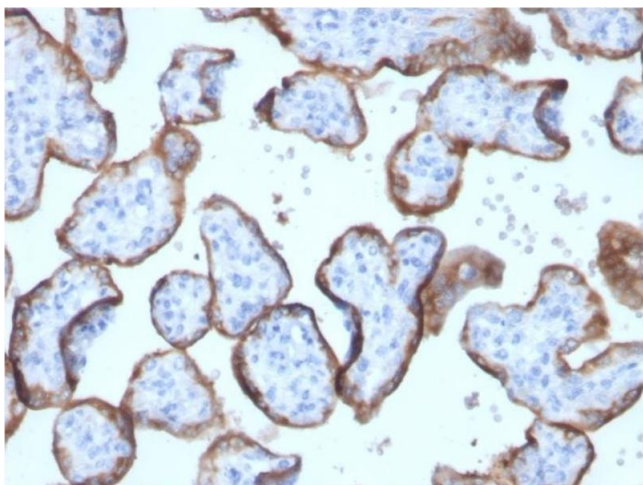
Storage Comment: Antibody with azide - store at 2 to 8°C. Antibody without azide - store at -20 to -80°C. Antibody is stable for 24 months. Non-hazardous. No MSDS required.

Expiry Date: 24 months



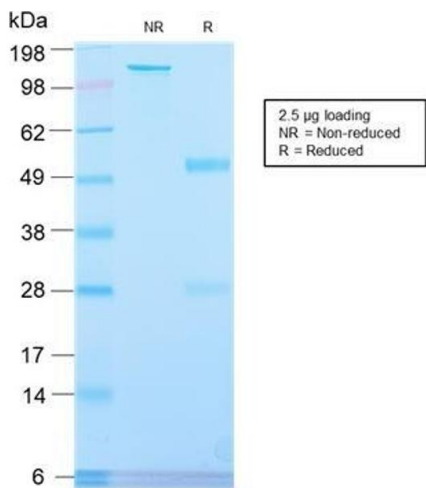
### Western Blotting

**Image 1.** Western Blot Analysis of JEG-3 cell lysate using PLAP Rabbit Recombinant Monoclonal Antibody (ALPP/2899R).



### Immunohistochemistry

**Image 2.** Formalin-fixed, paraffin-embedded human placenta stained with PLAP Rabbit Recombinant Monoclonal Antibody (ALPP/2899R).



### SDS-PAGE

**Image 3.** SDS-PAGE Analysis Purified PLAP Rabbit Recombinant Monoclonal Antibody (ALPP/2899R). Confirmation of Integrity and Purity of Antibody.