

Datasheet for ABIN6939471

anti-CD15 antibody

4 Images

[Go to Product page](#)

Overview

Quantity:	100 µg
Target:	CD15 (FUT4)
Reactivity:	Human
Host:	Mouse
Clonality:	Monoclonal
Conjugate:	This CD15 antibody is un-conjugated
Application:	Flow Cytometry (FACS), Immunohistochemistry (IHC), Immunofluorescence (IF), Staining Methods (StM)

Product Details

Immunogen:	U937 histiocytic cell line
Clone:	Leu-M1-same as MMA
Isotype:	IgM kappa

Target Details

Target:	CD15 (FUT4)
Alternative Name:	FUT4 (FUT4 Products)
Background:	CD15 plays a role in mediating phagocytosis, bactericidal activity, and chemotaxis. It is present on s disease. CD15 is occasionally expressed in large cell lymphomas of both B and T phenotypes which otherwise have a quite distinct histological appearance.
Molecular Weight:	~220kDa

Target Details

Gene ID: 2526

UniProt: [P22083](#)

Application Details

Application Notes: Positive Control: U937 cells, Reed-Sternberg's cells in Hodgkin's lymphoma.
Known Application: Flow Cytometry (0.5-1 µg/million cells), Immunofluorescence (0.5-1 µg/mL), Immunohistochemistry (Formalin-fixed) (0.5-1.0 µg/mL for 30 minutes at RT)(Staining of formalin-fixed tissues requires boiling tissue sections in 10 mM Tris with 1 mM EDTA, pH 9.0, for 10-20 min followed by cooling at RT for 20 minutes)Optimal dilution for a specific application should be determined.

Restrictions: For Research Use only

Handling

Concentration: 200 µg/mL

Buffer: 10 mM PBS with 0.05 % BSA & 0.05 % azide.

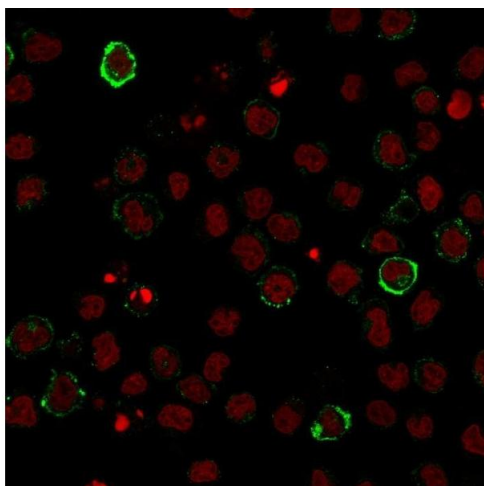
Preservative: Sodium azide

Precaution of Use: This product contains Sodium azide: a POISONOUS AND HAZARDOUS SUBSTANCE which should be handled by trained staff only.

Storage: 4 °C,-80 °C

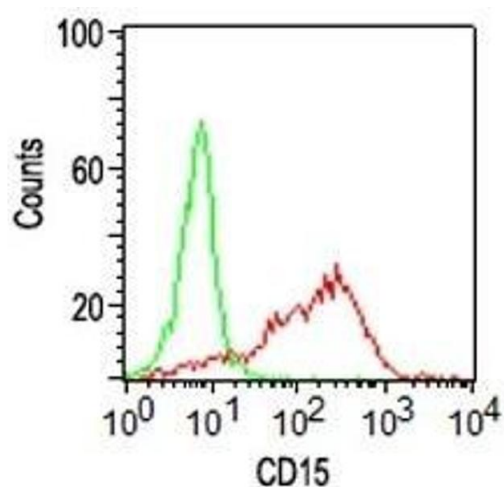
Storage Comment: Antibody with azide - store at 2 to 8°C. Antibody without azide - store at -20 to -80°C. Antibody is stable for 24 months. Non-hazardous. No MSDS required.

Expiry Date: 24 months



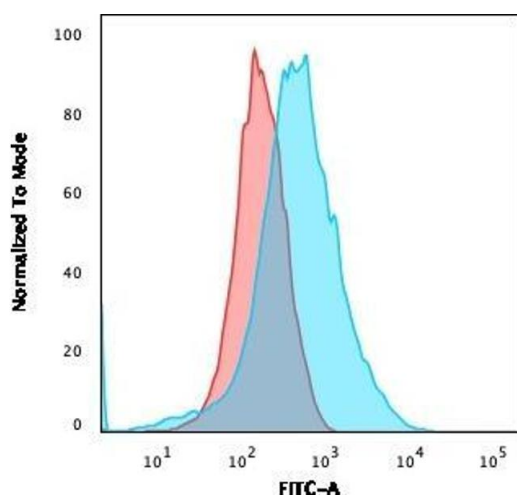
Immunofluorescence

Image 1. Immunofluorescence staining of U937 cells using CD15 Monoclonal Antibody (Leu-M1) followed by goat anti-Mouse IgG conjugated to CF488 (green). Nuclei are stained with Reddot.



Flow Cytometry

Image 2. FACS analysis of human Monocytes using CD15 Monoclonal Antibody (Leu-M1).



Flow Cytometry

Image 3. Flow Cytometric Analysis of U937 cells using CD15 MAb (Leu-M1) followed by goat anti-Mouse IgG-CF488 (Blue); Isotype Control (Red).

Please check the [product details page](#) for more images. Overall 4 images are available for ABIN6939471.