

## Datasheet for ABIN6939480 **anti-XRCC6/XRCC5 antibody**

### 4 Images



[Go to Product page](#)

### Overview

Quantity:	100 µg
Target:	XRCC6/XRCC5
Reactivity:	Human, Primate
Host:	Mouse
Clonality:	Monoclonal
Conjugate:	This XRCC6/XRCC5 antibody is un-conjugated
Application:	Immunofluorescence (IF), Flow Cytometry (FACS), Immunocytochemistry (ICC)

### Product Details

Immunogen:	Nuclear extract of human HL-60 cells
Clone:	KU729
Isotype:	IgG1 kappa
Specificity:	Recognizes a dimer of two proteins of 70 kDa and ~80 kDa, identified as two subunits of Ku. This MAAb recognizes a conformational epitope of p70/p80 dimer, which is destroyed during Western blotting. The p70/p80 dimer is important for function of a 460 kDa DNA-dependent protein kinase. Ku protein plays a role in cell signaling, proliferation, DNA repair, replication, transcriptional activation, and apoptosis.
No Cross-Reactivity:	Chicken, Mouse (Murine), Rat (Rattus)
Purification:	Purified by Protein A/G

## Target Details

---

Target:	XRCC6/XRCC5
Alternative Name:	XRCC6 (p70) & XRCC5 (p80) ( <a href="#">XRCC6/XRCC5 Products</a> )
Molecular Weight:	70kDa & 80kDa
Gene ID:	2547, 7520
UniProt:	<a href="#">P12956</a> , <a href="#">P13010</a>

## Application Details

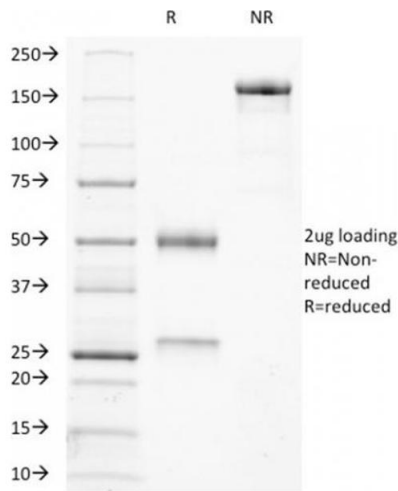
---

Application Notes:	Positive Control: Human cancer K562, HL-60, HEp-2 or HeLa cells. Known Application: Flow Cytometry (1-2 µg/million cells), Immunofluorescence (1-2 µg/mL), Immunocytochemistry (Acetone-fixed cells) (0.5-1.0 µg/mL for 30 minutes at RT)Optimal dilution for a specific application should be determined.
Restrictions:	For Research Use only

## Handling

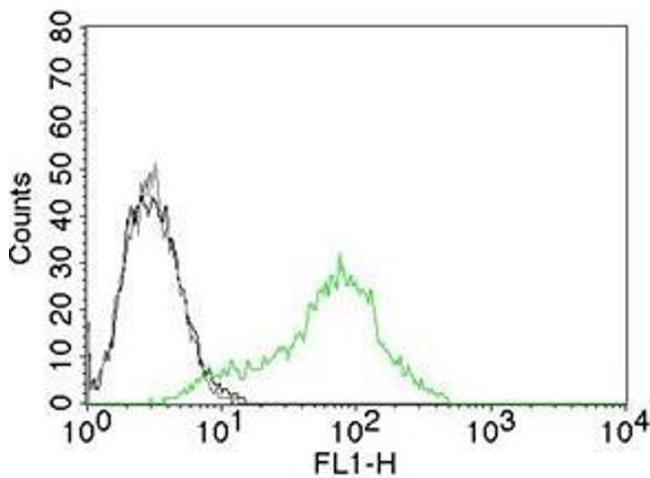
---

Concentration:	200 µg/mL
Buffer:	10 mM PBS with 0.05 % BSA & 0.05 % azide.
Preservative:	Sodium azide
Precaution of Use:	This product contains Sodium azide: a POISONOUS AND HAZARDOUS SUBSTANCE which should be handled by trained staff only.
Storage:	4 °C,-80 °C
Storage Comment:	Antibody with azide - store at 2 to 8°C. Antibody without azide - store at -20 to -80°C. Antibody is stable for 24 months. Non-hazardous. No MSDS required.
Expiry Date:	24 months



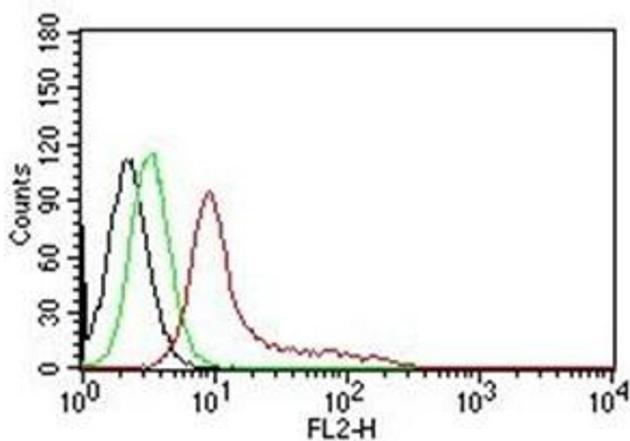
### SDS-PAGE

**Image 1.** SDS-PAGE Analysis Purified Ku Mouse Monoclonal Antibody (KU729). Confirmation of Integrity and Purity of Antibody.



### Flow Cytometry

**Image 2.** Flow Cytometric Analysis of human Ku (p70/p80) on 293T cells. Black: cells alone; Grey: Isotype Control; Green: AF488-labeled Ku Mouse Monoclonal Antibody (KU729).



### Flow Cytometry

**Image 3.** Flow Cytometry of human Ku (p70/p80) on K562 cells. Black: cells alone; Green: Isotype Control; Red: PE-labeled Ku Mouse Monoclonal Antibody (KU729).

Please check the [product details page](#) for more images. Overall 4 images are available for ABIN6939480.