

Datasheet for ABIN6939501
anti-FBXO5 antibody (AA 1-250)

4 Images

[Go to Product page](#)

Overview

Quantity:	100 µg
Target:	FBXO5
Binding Specificity:	AA 1-250
Reactivity:	Human
Host:	Mouse
Clonality:	Monoclonal
Conjugate:	This FBXO5 antibody is un-conjugated
Application:	Western Blotting (WB), Immunohistochemistry (IHC), Staining Methods (StM)

Product Details

Immunogen:	Recombinant fragment (203 amino acid residues between aa 1-250) of human EMI1 protein
Clone:	EMI1-1176
Isotype:	IgG2a kappa
Specificity:	It recognizes a 56 kDa protein, which is identified as Early Mitotic Inhibitor-1 (EMI1). It regulates mitosis by inhibiting the anaphase promoting complex/cyclosome (APC). Emi1 is a conserved F box protein containing a zinc-binding region essential for APC inhibition. The Emi1 protein functions to promote cyclin A accumulation and S phase entry in somatic cells by inhibiting the APC complex. At the G1-S transition, Emi1 is transcriptionally induced by the E2F transcription factor. Emi1 overexpression accelerates S-phase entry and can override a G1 block caused by overexpression of Cdh1 or the E2F-inhibitor p105 retinoblastoma protein (pRb). Depleting cells of Emi1 through RNA interference prevents accumulation of cyclin A and inhibits S phase entry.

Product Details

Purification: Purified by Protein A/G

Target Details

Target: FBX05

Alternative Name: FBX05 ([FBX05 Products](#))

Molecular Weight: 56kDa

Gene ID: 26271

UniProt: [Q9UKT4](#)

Pathways: [Mitotic G1-G1/S Phases](#)

Application Details

Application Notes: Positive Control: HeLa, 293 or HepG2 cells. Ovarian carcinoma.
Known Application: Western Blot (1-2 µg/mL for 60 minutes at RT), Immunohistochemistry (Formalin-fixed) (1-2 µg/mL for 30 minutes at RT) (Staining of formalin-fixed tissues requires boiling tissue sections in 10 mM Citrate buffer, pH 6.0 for 10-20 min followed by cooling at RT for 20 minutes) Optimal dilution for a specific application should be determined.

Restrictions: For Research Use only

Handling

Concentration: 200 µg/mL

Buffer: 10 mM PBS with 0.05 % BSA & 0.05 % azide.

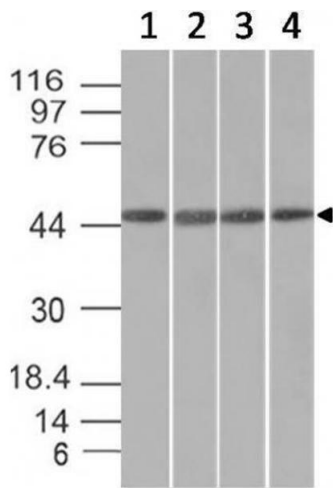
Preservative: Sodium azide

Precaution of Use: This product contains Sodium azide: a POISONOUS AND HAZARDOUS SUBSTANCE which should be handled by trained staff only.

Storage: 4 °C, -80 °C

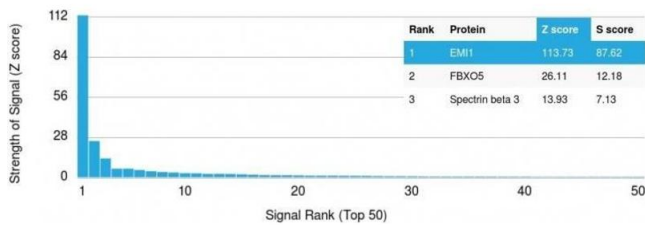
Storage Comment: Antibody with azide - store at 2 to 8°C. Antibody without azide - store at -20 to -80°C. Antibody is stable for 24 months. Non-hazardous. No MSDS required.

Expiry Date: 24 months



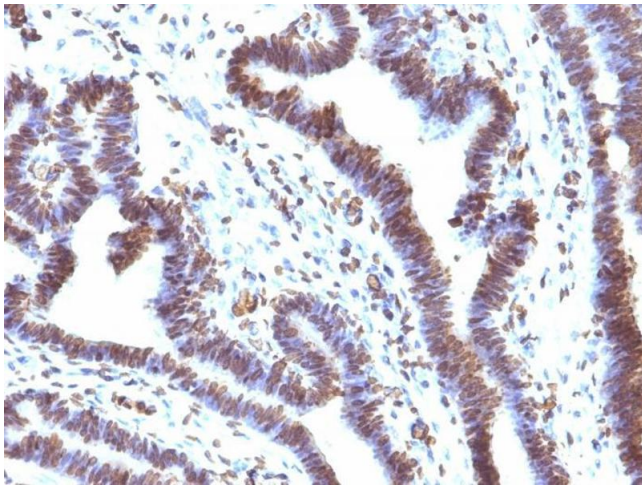
Western Blotting

Image 1. Western Blot of HeLa, HepG2, HEK293 and K562 cell lysates with EMI1 Mouse Monoclonal Antibody (EMI1/1176).



Protein Array

Image 2. Analysis of Protein Array containing more than 19,000 full-length human proteins using EMI1 Mouse Monoclonal Antibody (EMI1/1176). Z- and S- Score: The Z-score represents the strength of a signal that a monoclonal antibody (MAb) (in combination with a fluorescently-tagged anti-IgG secondary antibody) produces when binding to a particular protein on the HuProt™ array. Z-scores are described in units of standard deviations (SD's) above the mean value of all signals generated on that array. If targets on HuProt™ are arranged in descending order of the Z-score, the S-score is the difference (also in units of SD's) between the Z-score. S-score therefore represents the relative target specificity of a MAb to its intended target. A MAb is considered to specific to its intended target, if the MAb has an S-score of at least 2.5. For example, if a MAb binds to protein X with a Z-score of 43 and to protein Y with a Z-score of 14, then the S-score for the binding of that MAb to protein X is equal to 29.



Immunohistochemistry

Image 3. Formalin-fixed, paraffin-embedded human Ovarian Carcinoma stained with EMI1 Mouse Monoclonal Antibody (EMI1/1176).

Please check the [product details page](#) for more images. Overall 4 images are available for ABIN6939501.