

Datasheet for ABIN6939515

anti-GJB1 antibody**2** Images[Go to Product page](#)

Overview

Quantity:	100 µg
Target:	GJB1
Reactivity:	Human, Rat, Mouse
Host:	Mouse
Clonality:	Monoclonal
Conjugate:	This GJB1 antibody is un-conjugated
Application:	Western Blotting (WB), Immunofluorescence (IF), Flow Cytometry (FACS), Immunohistochemistry (Frozen Sections) (IHC (fro))

Product Details

Immunogen:	Rat junctional complexes
Clone:	M12-13
Isotype:	IgG
Specificity:	This Ab recognizes a protein of 27-32 kDa, identified as Connexin 32. The connexin family of proteins forms hexameric complexes called 'connexons' that facilitate movement of low molecular weight proteins between cells via gap junctions. Connexin proteins share a common topology of four transmembrane therefore, one connexin usually cannot fully substitute for another.

Target Details

Target:	GJB1
---------	------

Target Details

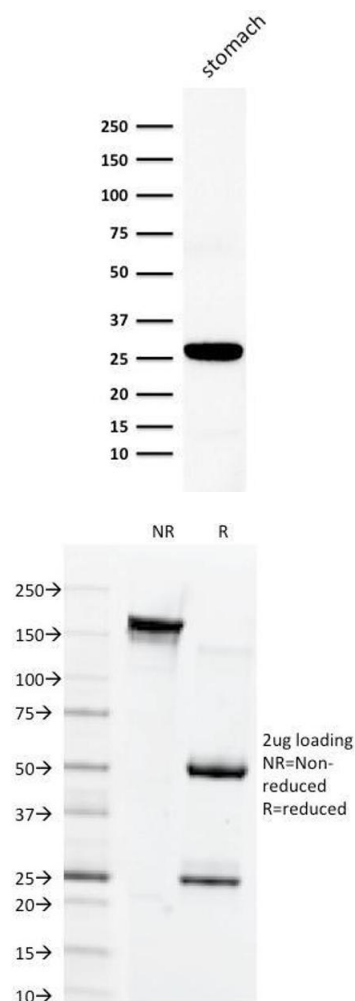
Alternative Name:	GJB1 (GJB1 Products)
Molecular Weight:	27-32kDa
Gene ID:	2705
UniProt:	P08034
Pathways:	Cell-Cell Junction Organization

Application Details

Application Notes:	Positive Control: MCF-7 cells. Liver, Kidney, Stomach or Tonsil. Known Application: Immunofluorescence (1-2 µg/mL), Flow Cytometry (0.5-1 µg/million cells), Western Blot (0.5-1 µg/mL), Immunohistochemistry (Frozen) (0.5-1.0 µg/mL for 30 minutes at RT)Optimal dilution for a specific application should be determined.
Restrictions:	For Research Use only

Handling

Concentration:	200 µg/mL
Buffer:	10 mM PBS with 0.05 % BSA & 0.05 % azide.
Preservative:	Sodium azide
Precaution of Use:	This product contains Sodium azide: a POISONOUS AND HAZARDOUS SUBSTANCE which should be handled by trained staff only.
Storage:	4 °C,-80 °C
Storage Comment:	Antibody with azide - store at 2 to 8°C. Antibody without azide - store at -20 to -80°C. Antibody is stable for 24 months. Non-hazardous. No MSDS required.
Expiry Date:	24 months



Western Blotting

Image 1. Western Blot Analysis of human stomach lysate using Connexin 32 Mouse Monoclonal Antibody (Clone M12.13)

SDS-PAGE

Image 2. SDS-PAGE Analysis Purified Connexin 32 Mouse Monoclonal Antibody (Clone M12.13). Confirmation of Integrity and Purity of Antibody