

Datasheet for ABIN6939516

**anti-GJB1 antibody****2** Images[Go to Product page](#)

## Overview

Quantity:	100 µg
Target:	GJB1
Reactivity:	Human, Rat, Mouse
Host:	Mouse
Clonality:	Monoclonal
Conjugate:	This GJB1 antibody is un-conjugated
Application:	Immunohistochemistry (IHC), Staining Methods (StM)

## Product Details

Immunogen:	Recombinant human GJB1 protein
Clone:	GJB1-1753
Isotype:	IgG
Specificity:	This Ab recognizes a protein of 27-32 kDa, identified as Connexin 32. The connexin family of proteins forms hexameric complexes called 'connexons' that facilitate movement of low molecular weight proteins between cells via gap junctions. Connexin proteins share a common topology of four transmembrane therefore, one connexin usually cannot fully substitute for another.

## Target Details

Target:	GJB1
Alternative Name:	GJB1 ( <a href="#">GJB1 Products</a> )

## Target Details

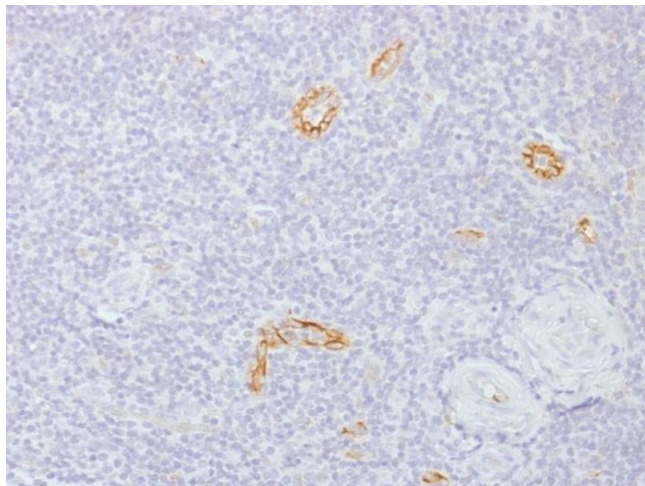
Molecular Weight:	27-32kDa
Gene ID:	2705
UniProt:	<a href="#">P08034</a>
Pathways:	<a href="#">Cell-Cell Junction Organization</a>

## Application Details

Application Notes:	Positive Control: MCF-7 cells. Liver, Kidney, Stomach or Tonsil. Known Application: Immunohistochemistry (Formalin-fixed) (0.1-0.2 µg/mL for 30 min at RT)(Staining of formalin-fixed tissues requires boiling tissue sections in 10 mM Citrate Buffer, pH 6.0, for 10-20 min followed by cooling at RT for 20 minutes)Optimal dilution for a specific application should be determined.
Restrictions:	For Research Use only

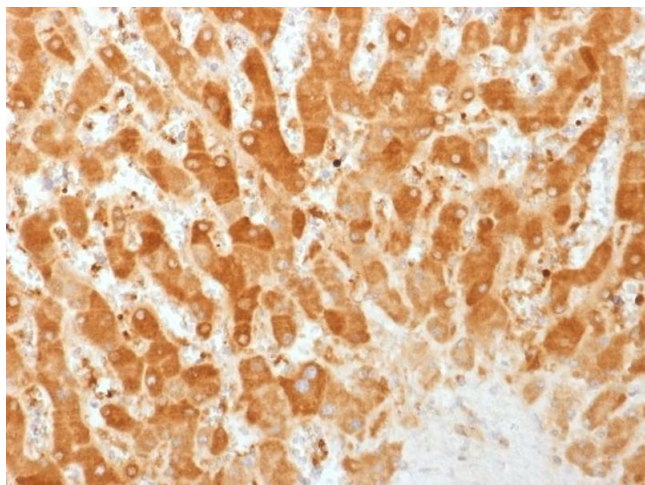
## Handling

Concentration:	200 µg/mL
Buffer:	10 mM PBS with 0.05 % BSA & 0.05 % azide.
Preservative:	Sodium azide
Precaution of Use:	This product contains Sodium azide: a POISONOUS AND HAZARDOUS SUBSTANCE which should be handled by trained staff only.
Storage:	4 °C,-80 °C
Storage Comment:	Antibody with azide - store at 2 to 8°C. Antibody without azide - store at -20 to -80°C. Antibody is stable for 24 months. Non-hazardous. No MSDS required.
Expiry Date:	24 months



#### Immunohistochemistry

**Image 1.** Formalin-fixed, paraffin-embedded human Tonsil stained with Connexin 32 Monoclonal Antibody (GJB1/1753)



#### Immunohistochemistry

**Image 2.** Formalin-fixed, paraffin-embedded human Liver stained with Connexin 32 Monoclonal Antibody (GJB1/1753)