

Datasheet for ABIN6939532

**anti-GLG1 antibody****1** Image[Go to Product page](#)

## Overview

Quantity:	100 µg
Target:	GLG1
Reactivity:	Human
Host:	Mouse
Clonality:	Monoclonal
Conjugate:	This GLG1 antibody is un-conjugated
Application:	Immunohistochemistry (IHC), Staining Methods (StM)

## Product Details

Immunogen:	Golgi fraction from human liver cells
Clone:	GLG1-970
Isotype:	IgG1 kappa
Specificity:	<p>This MAb recognizes a protein of 134 kDa, which binds fibroblast growth factor and E-selectin (cell-adhesion lectin on endothelial cells mediating the binding of neutrophils). Fucosylation is essential for binding to E-selectin. It contains sialic acid residues and 16 Cys-rich GLG1 repeats. This MAb can be used to stain the Golgi complex in cell or tissue preparations and can be used as a Golgi marker in subcellular fractions. It produces a diffuse staining pattern of the Golgi zone in normal and malignant cells. This MAb is an excellent marker for human cells in xenographic model research. It reacts specifically with human cells. The Golgi apparatus is an organelle present in all eukaryotic cells that forms a part of the endomembrane system. The primary function of the Golgi apparatus is to process and package macromolecules synthesized by the cell for exocytosis or use within the cell. The Golgi is made up of a stack of</p>

## Product Details

flattened, membrane-bound sacs known as cisternae, with three functional regions: the cis face, medial region and trans face. Each region consists of various enzymes that selectively modify the macromolecules passing through them, depending on where they are destined to reside. Several spherical vesicles that have budded off of the Golgi are present surrounding the main cisternae. The Golgi tends to be more pronounced and numerous in cells that make and secrete many substances such as plasma B cells.

No Cross-Reactivity: Mouse (Murine), Rat (Rattus)

Purification: Purified by Protein A/G

## Target Details

Target: GLG1

Alternative Name: GLG1 ([GLG1 Products](#))

Molecular Weight: 134kDa

Gene ID: 2734

UniProt: [Q92896](#)

## Application Details

Application Notes: Positive Control: HepG2, A431 or HeLa cells. Placenta, Tonsil, Testis and Ovary.  
Known Application: Immunohistochemistry (Formalin-fixed) (0.1-0.2 µg/mL for 30 min at RT)(Staining of formalin-fixed tissues requires boiling tissue sections in 10 mM Citrate Buffer, pH 6.0, for 10-20 min followed by cooling at RT for 20 minutes)Optimal dilution for a specific application should be determined.

Restrictions: For Research Use only

## Handling

Concentration: 200 µg/mL

Buffer: 10 mM PBS with 0.05 % BSA & 0.05 % azide.

Preservative: Sodium azide

Precaution of Use: This product contains Sodium azide: a POISONOUS AND HAZARDOUS SUBSTANCE which should be handled by trained staff only.

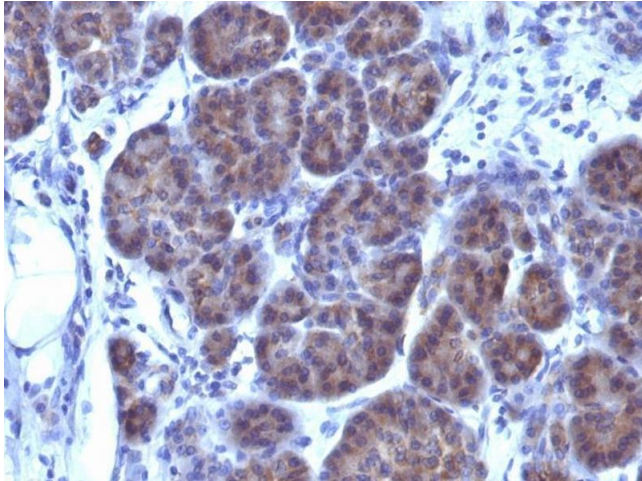
Storage: 4 °C,-80 °C

## Handling

Storage Comment: Antibody with azide - store at 2 to 8°C. Antibody without azide - store at -20 to -80°C. Antibody is stable for 24 months. Non-hazardous. No MSDS required.

Expiry Date: 24 months

## Images



### Immunohistochemistry

**Image 1.** Formalin-fixed, paraffin-embedded human Pancreas stained with GLG1 Monoclonal Antibody (GLG1/970).