



Datasheet for ABIN6939544
anti-GP2 antibody (AA 35-179)



[Go to Product page](#)

4 Images

Overview

Quantity:	100 µg
Target:	GP2
Binding Specificity:	AA 35-179
Reactivity:	Human
Host:	Mouse
Clonality:	Monoclonal
Conjugate:	This GP2 antibody is un-conjugated
Application:	Immunohistochemistry (IHC), ELISA, Coating (Coat), Staining Methods (StM)

Product Details

Immunogen:	Recombinant fragment of human GP2 protein (around aa 35-179) (exact sequence is proprietary)
Clone:	GP2-1805
Isotype:	IgG2c kappa
Purification:	Purified by Protein A/G

Target Details

Target:	GP2
Alternative Name:	GP2 (GP2 Products)
Target Type:	Viral Protein

Target Details

Background: GP2 (glycoprotein 2), also known as ZAP75, is a 537 amino acid secreted protein. It is an integral membrane protein that is secreted from intracellular zymogen granules and associates with the plasma membrane via glycosylphosphatidylinositol (GPI) linkage. GP2 is cleaved and then released into the pancreatic duct along with exocrine secretions. GP2 binds pathogens such as enterobacteria, thereby playing an important role in the innate immune response. The C-terminus of this protein is related to the C-terminus of the protein encoded by the neighboring gene, uromodulin (UMOD). GP2 is also expressed on the apical plasma membrane of specialized microfold (M) cells among enterocytes and serves as a transcytotic receptor for mucosal antigens. M cells are considered a promising target for oral vaccination against various infectious diseases.

Molecular Weight: 59kDa

Gene ID: 2813

UniProt: [P55259](#)

Application Details

Application Notes: Positive Control: PANC-1 cells. Pancreas.
Known Application: ELISA (Use Ab at 2-4 µg/mL for coating) (Order Ab without BSA), Immunohistochemistry (Formalin-fixed) (1-2 µg/mL for 30 minutes at RT)(Staining of formalin-fixed tissues requires boiling tissue sections in 10 mM citrate buffer, pH 6.0, for 10-20 min followed by cooling at RT for 20 minutes)Optimal dilution for a specific application should be determined.

Restrictions: For Research Use only

Handling

Concentration: 200 µg/mL

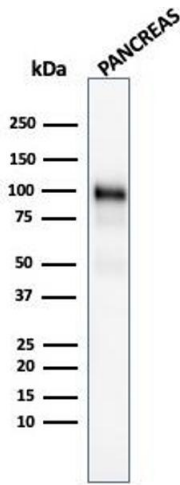
Buffer: 10 mM PBS with 0.05 % BSA & 0.05 % azide.

Preservative: Sodium azide

Precaution of Use: This product contains Sodium azide: a POISONOUS AND HAZARDOUS SUBSTANCE which should be handled by trained staff only.

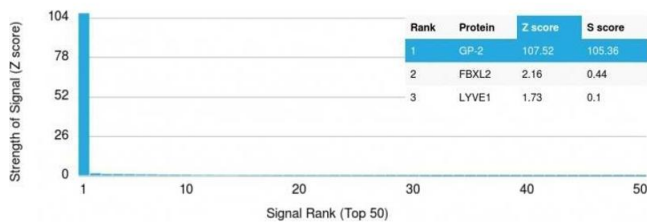
Storage: 4 °C,-80 °C

Storage Comment: Antibody with azide - store at 2 to 8°C. Antibody without azide - store at -20 to -80°C. Antibody is stable for 24 months. Non-hazardous. No MSDS required.



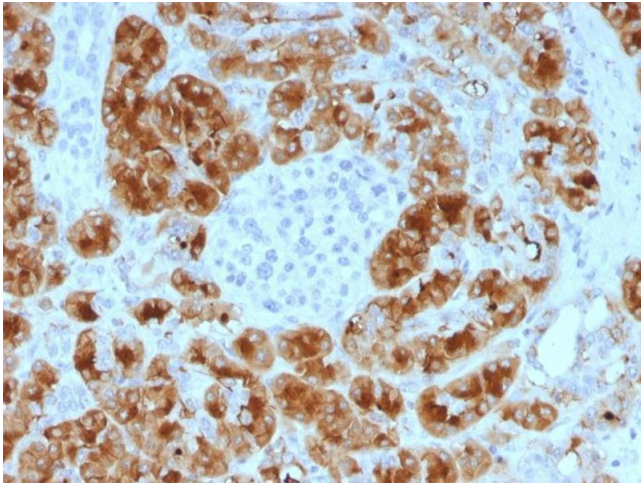
Western Blotting

Image 1. Western Blot Analysis of human Pancreas tissue lysate using GP2 Mouse Monoclonal Antibody (GP2/1805).



Protein Array

Image 2. Analysis of Protein Array containing more than 19,000 full-length human proteins using GP2 Mouse Monoclonal Antibody (GP2/1805) Z- and S- Score: The Z-score represents the strength of a signal that a monoclonal antibody (Monoclonal Antibody) (in combination with a fluorescently-tagged anti-IgG secondary antibody) produces when binding to a particular protein on the HuProt™ array. Z-scores are described in units of standard deviations (SD's) above the mean value of all signals generated on that array. If targets on HuProt™ are arranged in descending order of the Z-score, the S-score is the difference (also in units of SD's) between the Z-score. S-score therefore represents the relative target specificity of a Monoclonal Antibody to its intended target. A Monoclonal Antibody is considered to specific to its intended target, if the Monoclonal Antibody has an S-score of at least 2.5. For example, if a Monoclonal Antibody binds to protein X with a Z-score of 43 and to protein Y with a Z-score of 14, then the S-score for the binding of that Monoclonal Antibody to protein X is equal to 29.



Immunohistochemistry

Image 3. Formalin-fixed, paraffin-embedded human Pancreas stained with GP2 Mouse Monoclonal Antibody (GP2/1805).

Please check the [product details page](#) for more images. Overall 4 images are available for ABIN6939544.