



[Go to Product page](#)

Datasheet for ABIN6939574

anti-GSTM4 antibody

5 Images

Overview

Quantity:	100 µg
Target:	GSTM4
Reactivity:	Human
Host:	Mouse
Clonality:	Monoclonal
Conjugate:	This GSTM4 antibody is un-conjugated
Application:	Immunohistochemistry (IHC), Immunofluorescence (IF), Flow Cytometry (FACS), Staining Methods (StM)

Product Details

Immunogen:	Recombinant human full-length GSTMu2 protein
Clone:	CPTC-GSTMu2-2
Isotype:	IgG1 kappa
Purification:	Purified by Protein A/G

Target Details

Target:	GSTM4
Alternative Name:	GSTMu2 (GSTM4 Products)
Molecular Weight:	predicted: 26kDa, observed: 28kDA
Gene ID:	2946

Target Details

UniProt: [P28161](#)

Application Details

Application Notes: Positive Control: HeLa cell lysate, skeletal muscle extract, Kidney.
Known Application: Flow Cytometry (1-2 µg/million cells), (Immunofluorescence (1-2 µg/mL), Immunohistochemistry (Formalin-fixed) (0.5-1 µg/mL for 30 min at RT)(Staining of formalin-fixed tissues requires boiling tissue sections in 10 mM Citrate Buffer, pH 6.0, for 10-20 min followed by cooling at RT for 20 minutes)Optimal dilution for a specific application should be determined.

Restrictions: For Research Use only

Handling

Concentration: 200 µg/mL

Buffer: 10 mM PBS with 0.05 % BSA & 0.05 % azide.

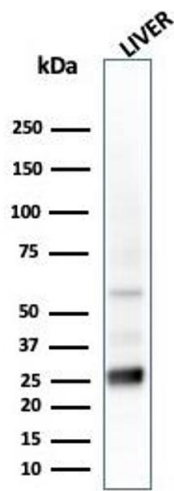
Preservative: Sodium azide

Precaution of Use: This product contains Sodium azide: a POISONOUS AND HAZARDOUS SUBSTANCE which should be handled by trained staff only.

Storage: 4 °C, -80 °C

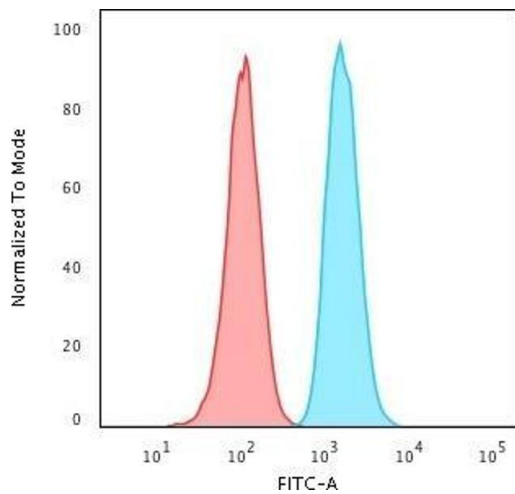
Storage Comment: Antibody with azide - store at 2 to 8°C. Antibody without azide - store at -20 to -80°C. Antibody is stable for 24 months. Non-hazardous. No MSDS required.

Expiry Date: 24 months



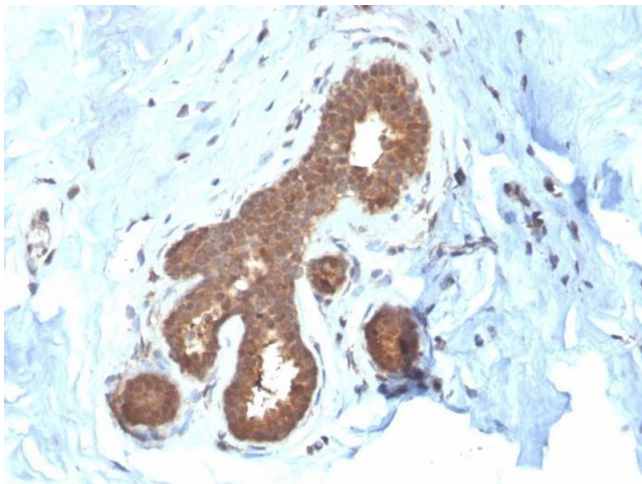
Western Blotting

Image 1. Western Blot Analysis of liver tissue lysate using GSTMu2 Mouse Monoclonal Antibody (CPTC-GSTMu2-2).



Flow Cytometry

Image 2. Flow Cytometric Analysis of PFA-fixed HeLa cells using GSTMu2 Mouse Monoclonal Antibody (CPTC-GSTMu2-2) followed by Goat anti-Mouse IgG-CF488 (Blue); Isotype Control (Red).



Immunohistochemistry

Image 3. Formalin-fixed, paraffin-embedded human Breast Carcinoma stained with GSTMu2 Mouse Monoclonal Antibody (CPTC-GSTMu2-2).

Please check the [product details page](#) for more images. Overall 5 images are available for ABIN6939574.