

Datasheet for ABIN6939586

Recombinant anti-CD235a/GYPA antibody**3** Images[Go to Product page](#)

Overview

Quantity:	100 µg
Target:	CD235a/GYPA (GYPA)
Reactivity:	Human
Host:	Mouse
Antibody Type:	Recombinant Antibody
Clonality:	Monoclonal
Conjugate:	This CD235a/GYPA antibody is un-conjugated
Application:	Immunohistochemistry (IHC), Staining Methods (StM)

Product Details

Immunogen:	Recombinant full-length human glycophorin A protein
Clone:	RGYPA-280
Isotype:	IgG1 kappa
Specificity:	Recognizes a sialoglycoprotein of 39 kDa, identified as glycophorin A (GPA). It is present on red blood cells (RBC) and erythroid precursor cells. It has been shown that glycophorin acts as the receptor for Sandei virus and parvovirus. Glycophorins A (GPA) and B (GPB), which are single, trans-membrane sialoglycoproteins. GPA is the carrier of blood group M and N specificities, while GPB accounts for S and U specificities. GPA and GPB provide the cells with a large mucin like surface and it has been suggested this provides a barrier to cell fusion, so minimizing aggregation between red blood cells in the circulation.
Purification:	Purified by Protein A/G

Target Details

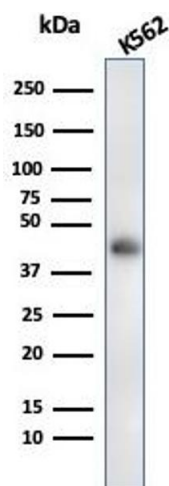
Target:	CD235a/GYPA (GYPA)
Alternative Name:	GYPA (GYPA Products)
Molecular Weight:	39kDa
Gene ID:	2993, 2994
UniProt:	P02724
Pathways:	Maintenance of Protein Location

Application Details

Application Notes:	Positive Control: Erythrocytes in any human tissues. Known Application: Immunohistochemistry (Formalin-fixed) (0.25-0.5 µg/mL for 30 minutes at RT)(Staining of formalin-fixed tissues requires boiling tissue sections in 10 mM Citrate Buffer, pH 6.0, for 10-20 min followed by cooling at RT for 20 minutes)Optimal dilution for a specific application should be determined.
Restrictions:	For Research Use only

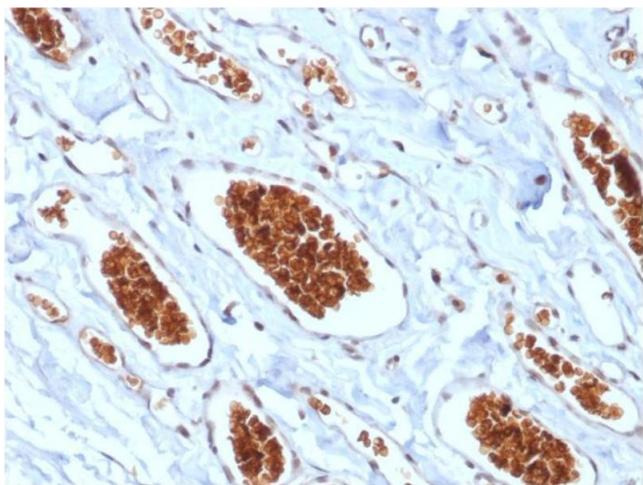
Handling

Concentration:	200 µg/mL
Buffer:	10 mM PBS with 0.05 % BSA & 0.05 % azide.
Preservative:	Sodium azide
Precaution of Use:	This product contains Sodium azide: a POISONOUS AND HAZARDOUS SUBSTANCE which should be handled by trained staff only.
Storage:	4 °C, -80 °C
Storage Comment:	Antibody with azide - store at 2 to 8°C. Antibody without azide - store at -20 to -80°C. Antibody is stable for 24 months. Non-hazardous. No MSDS required.
Expiry Date:	24 months



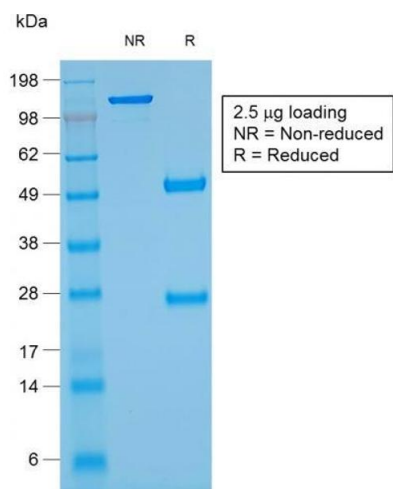
Western Blotting

Image 1. Western Blot Analysis of K562 cell lysate using Glycophorin A Mouse Recombinant Monoclonal Antibody (rGYPA/280).



Immunohistochemistry

Image 2. Formalin-fixed, paraffin-embedded human Angiosarcoma stained with Glycophorin A Mouse Recombinant Monoclonal Antibody (rGYPA/280).



SDS-PAGE

Image 3. SDS-PAGE Analysis Purified Glycophorin A Mouse Recombinant Monoclonal Ab (rGYPA/280). Confirmation of Purity and Integrity of Antibody