

Datasheet for ABIN6939623  
**anti-HLA-B antibody**



[Go to Product page](#)

1 Image

## Overview

Quantity:	100 µg
Target:	HLA-B
Reactivity:	Human
Host:	Mouse
Clonality:	Monoclonal
Conjugate:	This HLA-B antibody is un-conjugated
Application:	Flow Cytometry (FACS), Immunofluorescence (IF)

## Product Details

Immunogen:	Normal human peripheral blood lymphocytes
Clone:	JOAN-1
Isotype:	IgG3 kappa
Purification:	Purified by Protein A/G

## Target Details

Target:	HLA-B
Alternative Name:	HLA-B ( <a href="#">HLA-B Products</a> )
Background:	HLA-B belongs to the HLA class I heavy chain paralogues. This class I molecule is a heterodimer consisting of a heavy chain and a light chain (beta-2 microglobulin). The heavy chain is anchored in the membrane. Class I molecules play a central role in the immune system by presenting peptides derived from the endoplasmic reticulum lumen. They are expressed in

## Target Details

nearly all cells. The heavy chain is approximately 45 kDa and its gene contains 8 exons. Exon 1 encodes the leader peptide, exon 2 and 3 encode the alpha1 and alpha2 domains, which both bind the peptide, exon 4 encodes the alpha3 domain, exon 5 encodes the transmembrane region and exons 6 and 7 encode the cytoplasmic tail. Polymorphisms within exon 2 and exon 3 are responsible for the peptide binding specificity of each class one molecule. Typing for these polymorphisms is routinely done for bone marrow and kidney transplantation. Hundreds of HLA-B alleles have been described.

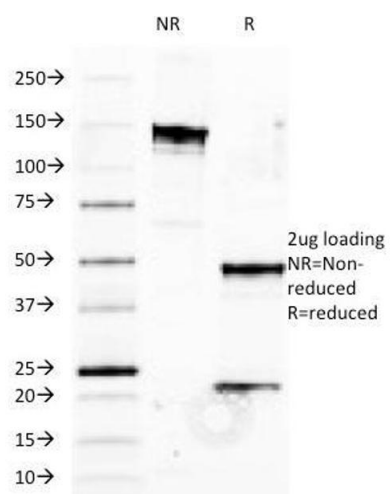
Molecular Weight:	45kDa
Gene ID:	3106
UniProt:	<a href="#">P01889</a>
Pathways:	<a href="#">Regulation of Leukocyte Mediated Immunity</a> , <a href="#">Positive Regulation of Immune Effector Process</a> , <a href="#">Cancer Immune Checkpoints</a> , <a href="#">Human Leukocyte Antigen (HLA) in Adaptive Immune Response</a>

## Application Details

Application Notes:	Positive Control: Human peripheral blood lymphocytes, tonsil or lymph node. Known Application: Flow Cytometry (1-2 µg/million cells), Immunofluorescence (1-2 µg/mL), Optimal dilution for a specific application should be determined.
Restrictions:	For Research Use only

## Handling

Concentration:	200 µg/mL
Buffer:	10 mM PBS with 0.05 % BSA & 0.05 % azide.
Preservative:	Sodium azide
Precaution of Use:	This product contains Sodium azide: a POISONOUS AND HAZARDOUS SUBSTANCE which should be handled by trained staff only.
Storage:	4 °C,-80 °C
Storage Comment:	Antibody with azide - store at 2 to 8°C. Antibody without azide - store at -20 to -80°C. Antibody is stable for 24 months. Non-hazardous. No MSDS required.
Expiry Date:	24 months



SDS-PAGE

**Image 1.** SDS-PAGE Analysis Purified HLA-B Mouse Monoclonal Antibody (JOAN-1). Confirmation of Integrity and Purity of Antibody.