

Datasheet for ABIN6939630

Recombinant anti-HLA-DPB1 antibody**3** Images[Go to Product page](#)

Overview

Quantity:	100 µg
Target:	HLA-DPB1
Reactivity:	Human
Host:	Rabbit
Antibody Type:	Recombinant Antibody
Clonality:	Monoclonal
Conjugate:	This HLA-DPB1 antibody is un-conjugated
Application:	ELISA, Flow Cytometry (FACS), Immunofluorescence (IF), Coating (Coat)

Product Details

Immunogen:	Non-T, non-B human acute lymphoblastic leukemia REH6 cell line
Clone:	HLA-DPB1-2862R
Isotype:	IgG
Specificity:	Recognizes a non-polymorphic determinant of DP-MHC class II. MHC class II antigens are transmembrane glycoproteins of non-covalently linked alpha (33-35 kDa) and beta (27-30 kDa) chains. It reportedly reacts with B- non-T, non-B cell lines but not with T- and myeloid cell lines and leukemias. Differential expression of MHC class II antigens on fetal and adult lymphocytes, malignant B cells appears to reflect the stage of cell differentiation which may be useful in the study of lymphoproliferative disorders.
Purification:	Purified by Protein A/G

Target Details

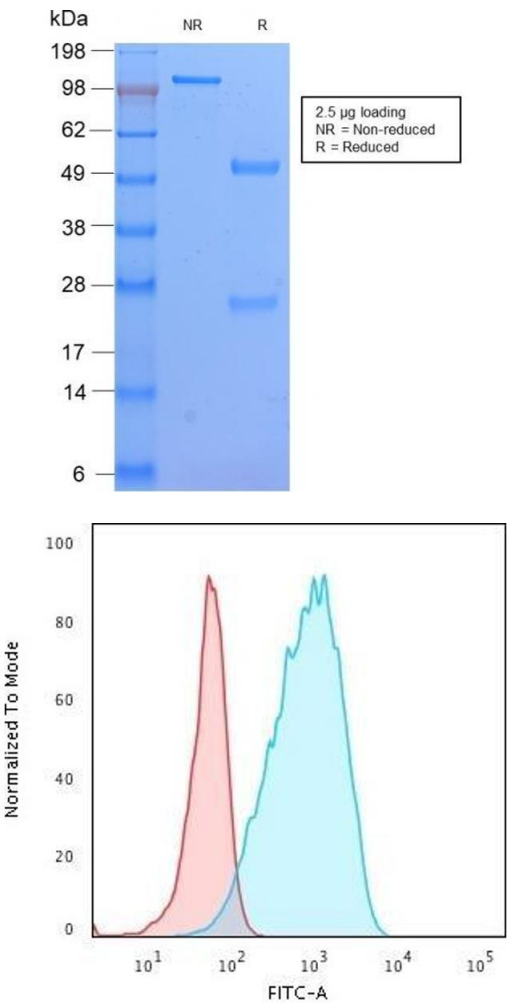
Target:	HLA-DPB1
Alternative Name:	HLA-DPB1 (HLA-DPB1 Products)
Molecular Weight:	33-35kDa
Gene ID:	3115
UniProt:	P04440
Pathways:	TCR Signaling , Cancer Immune Checkpoints , Human Leukocyte Antigen (HLA) in Adaptive Immune Response

Application Details

Application Notes:	Positive Control: Raji cells. Tonsil or lymph node. Known Application: ELISA (For coating use Ab at 2-4 µg/mL, order Ab without BSA), Flow Cytometry (1-2 µg/million cells), Immunofluorescence (1-2 µg/mL), Optimal dilution for a specific application should be determined.
Restrictions:	For Research Use only

Handling

Concentration:	200 µg/mL
Buffer:	10 mM PBS with 0.05 % BSA & 0.05 % azide.
Preservative:	Sodium azide
Precaution of Use:	This product contains Sodium azide: a POISONOUS AND HAZARDOUS SUBSTANCE which should be handled by trained staff only.
Storage:	4 °C, -80 °C
Storage Comment:	Antibody with azide - store at 2 to 8°C. Antibody without azide - store at -20 to -80°C. Antibody is stable for 24 months. Non-hazardous. No MSDS required.
Expiry Date:	24 months

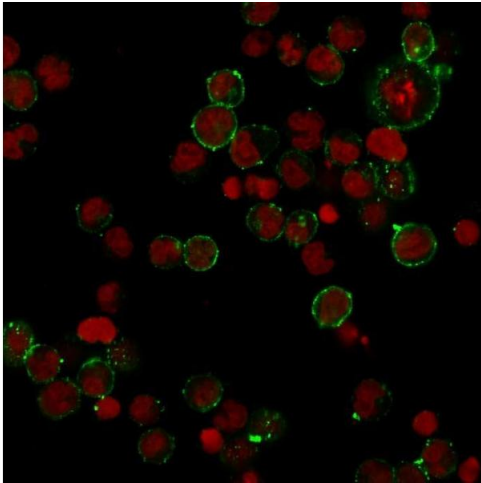


SDS-PAGE

Image 1. SDS-PAGE Analysis Purified HLA-DP Rabbit Recombinant Monoclonal Ab (HLA-DPB1/2862R). Confirmation of Purity and Integrity of Antibody.

Flow Cytometry

Image 2. Flow Cytometric Analysis of Raji cells HLA-DP Rabbit Recombinant Monoclonal Antibody (HLA-DPB1/2862R) followed by goat anti-Rabbit IgG-CF488 (Blue); Isotype Control (Red).



Immunofluorescence

Image 3. Immunofluorescence Analysis of Human Raji cells labeling HLA-DP with HLA-DP Rabbit Recombinant Monoclonal (HLA-DPB1/2862R) followed by Goat anti-rabbit IgG-CF488 (Green). The nuclear counterstain is Reddot (Red).