

Datasheet for ABIN6939640  
**anti-HLA-DRB1 antibody**

## 6 Images

[Go to Product page](#)

## Overview

Quantity:	100 µg
Target:	HLA-DRB1
Reactivity:	Human, Monkey
Host:	Mouse
Clonality:	Monoclonal
Conjugate:	This HLA-DRB1 antibody is un-conjugated
Application:	Western Blotting (WB), Flow Cytometry (FACS), Immunofluorescence (IF), Immunostaining (Ist), Immunohistochemistry (IHC), Staining Methods (StM)

## Product Details

Immunogen:	Activated human peripheral blood mononuclear cells
Clone:	LN-3
Isotype:	IgG2b kappa
Specificity:	<p>This MAb reacts with a 28 kDa chain of HLA-DRB1 antigen, a member of MHC class II molecules. It does not cross react with HLA-DP and HLA-DQ. The L243 antibody recognizes a different epitope than the LN3 monoclonal antibody, and these antibodies do not cross-block binding to each other's respective epitopes. HLA-DR is a heterodimeric cell surface glycoprotein comprised of a 36 kDa alpha (heavy) chain and a 28 kDa beta (light) chain. It is expressed on B-cells, activated T-cells, monocytes/macrophages, dendritic cells and other non-professional APCs. In conjunction with the CD3/TCR complex and CD4 Molecules, HLA-DR is critical for efficient peptide presentation to CD4+ T cells. It is an excellent histiocytic marker in paraffin sections producing intense staining. True histiocytic neoplasms are similarly positive. HLA-DR</p>

## Product Details

antigens also occur on a variety of epithelial cells and their corresponding neoplastic counterparts. Loss of HLA-DR expression is related to tumor microenvironment and predicts adverse outcome in diffuse large B-cell lymphoma.

No Cross-Reactivity: Mouse (Murine)

Purification: Purified by Protein A/G

## Target Details

Target: HLA-DRB1

Alternative Name: HLA-DRB1 ([HLA-DRB1 Products](#))

Molecular Weight: 28kDa (beta chain)

Gene ID: 3123

UniProt: [P01911](#)

Pathways: [TCR Signaling](#), [Positive Regulation of Peptide Hormone Secretion](#), [Production of Molecular Mediator of Immune Response](#), [CXCR4-mediated Signaling Events](#), [Cancer Immune Checkpoints](#), [Human Leukocyte Antigen \(HLA\) in Adaptive Immune Response](#)

## Application Details

Application Notes: Positive Control: Raji, Ramos, Daudi or HuT78 cells. Spleen, Tonsil or lymph node.  
Known Application: Flow Cytometry (1-2 µg/million cells), Immunofluorescence (1-2 µg/mL), Western Blot (1-2 µg/mL), Immunohistochemistry (Formalin-fixed) (0.5-1.0 µg/mL for 30 minutes at RT)(Staining of formalin-fixed tissues is enhanced by boiling tissue sections in 10 mM Citrate Buffer, pH 6.0, for 10-20 min followed by cooling at RT for 20 minutes)Optimal dilution for a specific application should be determined.

Restrictions: For Research Use only

## Handling

Concentration: 200 µg/mL

Buffer: 10 mM PBS with 0.05 % BSA & 0.05 % azide.

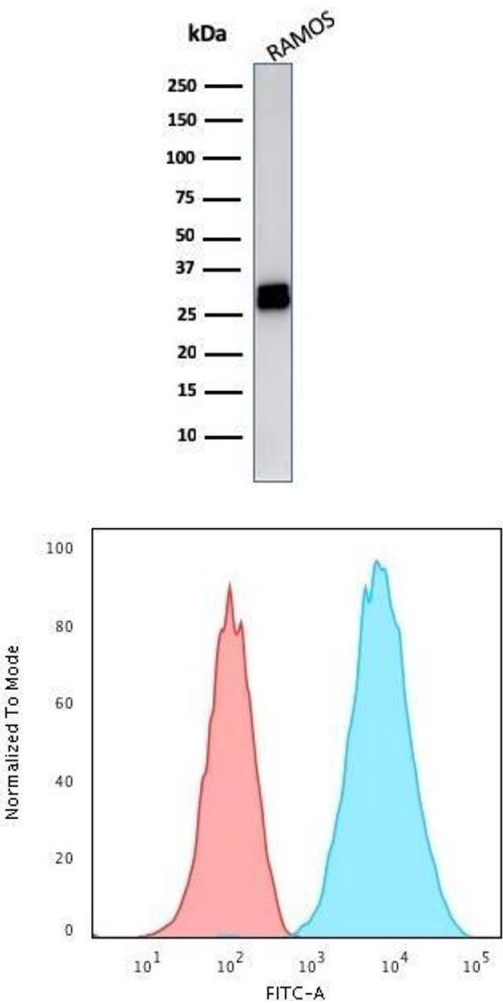
Preservative: Sodium azide

Precaution of Use: This product contains Sodium azide: a POISONOUS AND HAZARDOUS SUBSTANCE which should be handled by trained staff only.

Handling

Storage:	4 °C,-80 °C
Storage Comment:	Antibody with azide - store at 2 to 8°C. Antibody without azide - store at -20 to -80°C. Antibody is stable for 24 months. Non-hazardous. No MSDS required.
Expiry Date:	24 months

Images

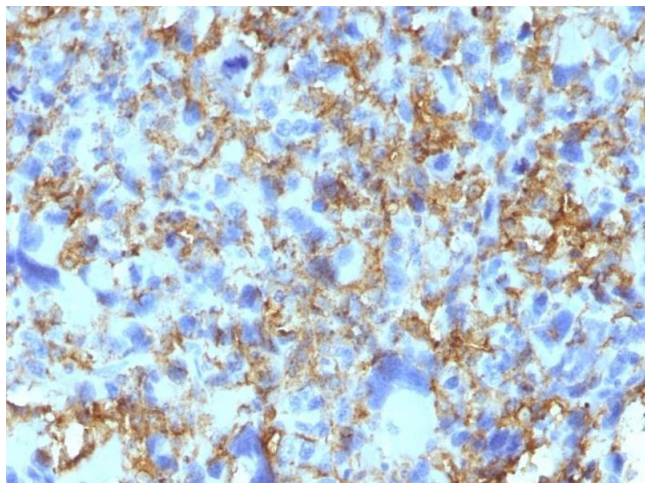


Western Blotting

**Image 1.** Western Blot Analysis of Ramos cell lysate using HLA-DR Mouse Monoclonal Antibody (LN-3).

Flow Cytometry

**Image 2.** Flow Cytometric Analysis of Raji cells. HLA-DR Mouse Monoclonal Antibody (LN-3) followed by goat anti-Mouse IgG-CF488 (Blue); Isotype Control (Red).



#### Immunohistochemistry

**Image 3.** Formalin-fixed, paraffin-embedded human Histiocytoma stained with HLA-DR Monoclonal Antibody (LN-3).

Please check the [product details page](#) for more images. Overall 6 images are available for ABIN6939640.