

Datasheet for ABIN6939645 **anti-HLA-DRB1 antibody**



[Go to Product page](#)

1 Image

Overview

Quantity:	100 µg
Target:	HLA-DRB1
Reactivity:	Human, Monkey, Dog, Squirrel, Baboon, Chimpanzee
Host:	Mouse
Clonality:	Monoclonal
Conjugate:	This HLA-DRB1 antibody is un-conjugated
Application:	Flow Cytometry (FACS), Immunofluorescence (IF)

Product Details

Immunogen:	Activated human peripheral blood mononuclear cells
Clone:	L243
Isotype:	IgG2a kappa
Specificity:	This MAb reacts with the HLA-DRB1 antigen, a member of MHC class II molecules. It does not cross react with HLA-DP and HLA-DQ. It binds a conformational epitope on HLA-DR, which depends on the correct folding of the heterodimer. This MAb has been reported to block mixed lymphocyte reactions. The L243 antibody recognizes a different epitope than the LN3 monoclonal antibody, and these antibodies do not cross-block binding to each other's respective epitopes. HLA-DR is a heterodimeric cell surface glycoprotein comprised of a 36kD alpha (heavy) chain and a 28kD beta (light) chain. It is expressed on B-cells, activated T-cells, monocytes/macrophages, dendritic cells and other non-professional APCs. In conjunction with the CD3/TCR complex and CD4 Molecules, HLA-DR is critical for efficient peptide presentation to CD4+ T cells. It is an excellent histiocytic marker in paraffin sections producing intense

Product Details

staining. True histiocytic neoplasms are similarly positive. HLA-DR antigens also occur on a variety of epithelial cells and their corresponding neoplastic counterparts.

Purification: Purified by Protein A/G

Target Details

Target: HLA-DRB1

Alternative Name: HLA-DRB1 ([HLA-DRB1 Products](#))

Molecular Weight: ~28kDa (beta chain)

Gene ID: 3123

UniProt: [P01911](#)

Pathways: [TCR Signaling](#), [Positive Regulation of Peptide Hormone Secretion](#), [Production of Molecular Mediator of Immune Response](#), [CXCR4-mediated Signaling Events](#), [Cancer Immune Checkpoints](#), [Human Leukocyte Antigen \(HLA\) in Adaptive Immune Response](#)

Application Details

Application Notes: Positive Control: Ramos, Daudi or HuT78 cells. Tonsil or lymph node.
Known Application: Flow Cytometry (0.5-1 µg/million cells), Immunofluorescence (0.5-1 µg/mL), Optimal dilution for a specific application should be determined.

Restrictions: For Research Use only

Handling

Concentration: 200 µg/mL

Buffer: 10 mM PBS with 0.05 % BSA & 0.05 % azide.

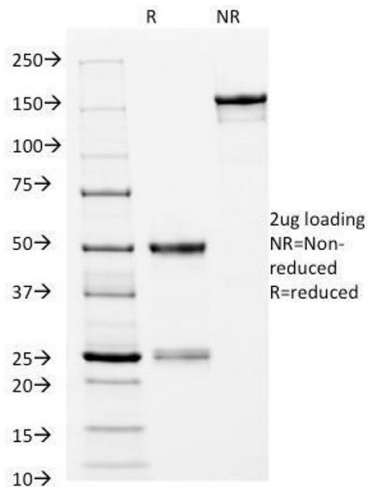
Preservative: Sodium azide

Precaution of Use: This product contains Sodium azide: a POISONOUS AND HAZARDOUS SUBSTANCE which should be handled by trained staff only.

Storage: 4 °C, -80 °C

Storage Comment: Antibody with azide - store at 2 to 8°C. Antibody without azide - store at -20 to -80°C. Antibody is stable for 24 months. Non-hazardous. No MSDS required.

Expiry Date: 24 months



SDS-PAGE

Image 1. SDS-PAGE Analysis Purified HLA-DRB Mouse Monoclonal Antibody (L243). Confirmation of Integrity and Purity of Antibody.