

Datasheet for ABIN6939665

anti-HSPD1 antibody**6** Images[Go to Product page](#)

Overview

Quantity:	100 µg
Target:	HSPD1
Reactivity:	Human, Mouse, Rat, Chicken, Monkey, Hamster, Dog, Cow, Pig, Rabbit, Sheep, Drosophila melanogaster, Xenopus laevis
Host:	Mouse
Clonality:	Monoclonal
Conjugate:	This HSPD1 antibody is un-conjugated
Application:	Western Blotting (WB), Immunohistochemistry (IHC), Immunofluorescence (IF), Flow Cytometry (FACS), Immunostaining (Ist), Staining Methods (StM)

Product Details

Immunogen:	Recombinant human HSP60 protein
Clone:	LK1
Isotype:	IgG1 kappa
Specificity:	Recognizes a 60 kDa protein, identified as the heat shock protein 60 (hsp60). Its epitope is localized between aa 383-447 of human hsp60. A wide variety of environmental and pathophysiological stressful conditions trigger the synthesis of a family of proteins known as heat shock proteins (hsp s), more appropriately called as stress response proteins (srp s). Hsp60 is a potential antigen in a number of autoimmune diseases. In human arthritis and in experimentally induced arthritis in animals, disease development coincides with the development of immune reactivity directed against not only bacterial hsp60, but also against its mammalian homolog.

Product Details

No Cross-Reactivity: Bacteria, Nematode, Spinach (*Spinacia oleracea*)

Purification: Purified by Protein A/G

Target Details

Target: HSPD1

Alternative Name: HSPD1 ([HSPD1 Products](#))

Molecular Weight: 60kDa

Gene ID: 3329

UniProt: [P10809](#)

Pathways: [Activation of Innate immune Response](#), [Regulation of Leukocyte Mediated Immunity](#), [Positive Regulation of Immune Effector Process](#), [Production of Molecular Mediator of Immune Response](#), [Positive Regulation of Endopeptidase Activity](#)

Application Details

Application Notes: Positive Control: MCF-7 or HeLa or HepG2 cells. Synovial biopsies from patients with juvenile chronic arthritis. Synovial lining layer is strongly positive for hsp60. Breast carcinoma.
Known Application: Flow Cytometry (0.5-1 µg/million cells), Immunofluorescence (1-2 µg/mL), Western Blot (0.25-0.5 µg/mL), Immunohistochemistry (Formalin-fixed) (0.5-1 µg/mL for 30 minutes at RT),(Staining of formalin-fixed tissues is enhanced by boiling tissue sections in 10 mM Citrate Buffer, pH 6.0, for 10-20 min followed by cooling at RT for 20 minutes),Optimal dilution for a specific application should be determined.

Restrictions: For Research Use only

Handling

Concentration: 200 µg/mL

Buffer: 10 mM PBS with 0.05 % BSA & 0.05 % azide.

Preservative: Sodium azide

Precaution of Use: This product contains Sodium azide: a POISONOUS AND HAZARDOUS SUBSTANCE which should be handled by trained staff only.

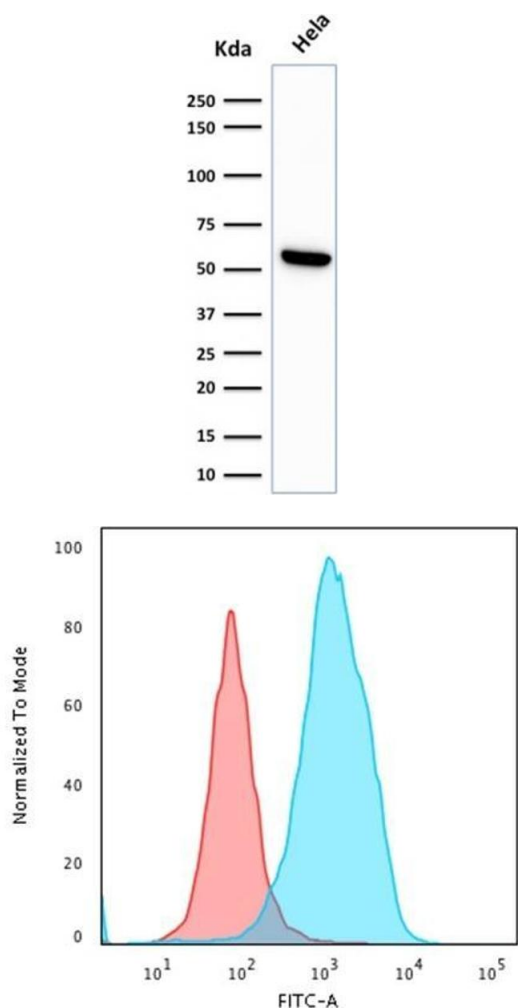
Storage: 4 °C

Handling

Storage Comment: Antibody with azide - store at 2 to 8°C. Antibody is stable for 24 months. Non-hazardous. No MSDS required.

Expiry Date: 24 months

Images

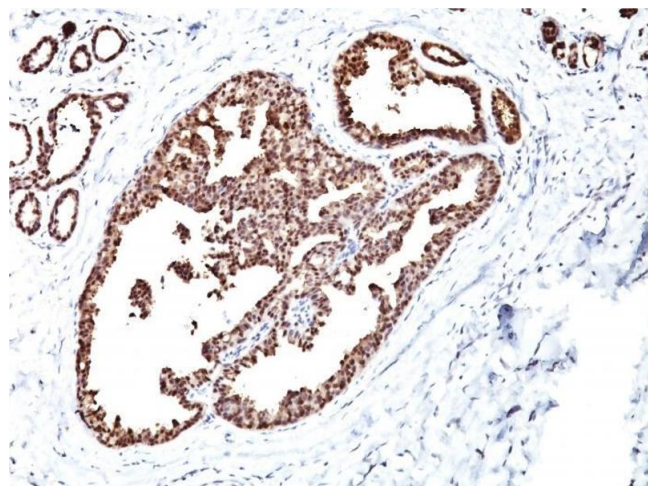


Western Blotting

Image 1. Western Blot Analysis of HeLa cell lysate using HSP60 Monoclonal Antibody (LK1)

Flow Cytometry

Image 2. Flow Cytometric Analysis of paraformaldehyde-fixed HeLa cells using HSP60 Mouse Monoclonal Antibody (LK1) followed by goat anti-Mouse IgG-CF488 (Blue); Isotype Control (Red).



Immunohistochemistry

Image 3. Formalin-fixed, paraffin-embedded human Breast Carcinoma stained with HSP60 Monoclonal Antibody (LK1)

Please check the [product details page](#) for more images. Overall 6 images are available for ABIN6939665.