



[Go to Product page](#)

Datasheet for ABIN6939707

## anti-IgD antibody

### 2 Images

#### Overview

Quantity:	100 µg
Target:	IgD
Reactivity:	Human
Host:	Mouse
Clonality:	Monoclonal
Conjugate:	This IgD antibody is un-conjugated
Application:	Flow Cytometry (FACS), Immunohistochemistry (IHC), Immunofluorescence (IF), Staining Methods (StM)

#### Product Details

Immunogen:	Full-length human IGHD protein
Clone:	IgD26
Isotype:	IgG1 kappa
Purification:	Purified by Protein A/G

#### Target Details

Target:	IgD
Alternative Name:	<a href="#">IGHD (IgD Products)</a>
Target Type:	Antibody
Background:	Immunoglobulins are four-chain, Y-shaped, monomeric structures comprised of two identical

## Target Details

---

heavy chains and two identical light chains held together through interchain disulfide bonds. The chains form two domains, the Fab (antigen binding) fragment and the Fc (constant) fragment. Immunoglobulin D (IgD) exists as a monomer with light chains. It plays a biological role as a transmembrane receptor molecule, co-expressed with IgM on the surface of mature/naive B cells. In particular, it is found on spleen B cell surfaces. Compared to IgM, IgD exists in much lower numbers and is not expressed on immature B cells. IgD surface expression on B cells is regulated in part by IL-27. In mice, the inhibition of this immunoglobulin isotype does not cause a significant change to the immune system.

Molecular Weight: 44-80kDa (heavy chain), 21-25kDa (kappa light chain)

Gene ID: 3495

UniProt: [P01880](#)

## Application Details

---

Application Notes: Positive Control: Human tonsil lysate, NAMALWA cell lysate, Human tonsil and lymphoid tissues.  
Known Application: Flow Cytometry (0.5-1 µg/million cells), Immunofluorescence (0.5-1 µg/mL), Immunohistochemistry (Formalin-fixed) (0.5-1 µg/mL for 30 minutes at RT)(Staining of formalin-fixed tissues requires boiling tissue sections in 1 mM EDTA buffer, pH 7.5-8.5, for 10-20 min followed by cooling at RT for 20 minutes)Optimal dilution for a specific application should be determined.

Restrictions: For Research Use only

## Handling

---

Concentration: 200 µg/mL

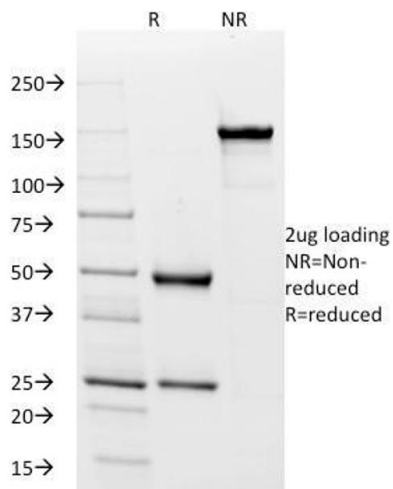
Buffer: 10 mM PBS with 0.05 % BSA & 0.05 % azide.

Preservative: Sodium azide

Precaution of Use: This product contains Sodium azide: a POISONOUS AND HAZARDOUS SUBSTANCE which should be handled by trained staff only.

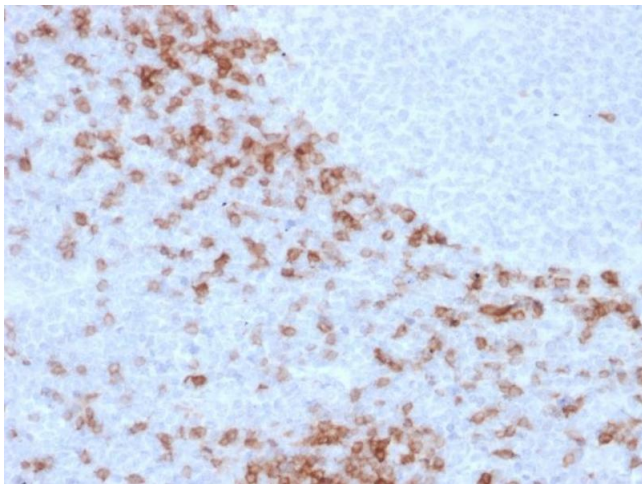
Storage: 4 °C, -80 °C

Storage Comment: Antibody with azide - store at 2 to 8°C. Antibody without azide - store at -20 to -80°C. Antibody is stable for 24 months. Non-hazardous. No MSDS required.



### SDS-PAGE

**Image 1.** SDS-PAGE Analysis Purified IgD Mouse Monoclonal Antibody (IGD26). Confirmation of Purity and Integrity of Antibody.



### Immunohistochemistry

**Image 2.** Formalin-fixed, paraffin-embedded human Lymph Node stained with IgD Mouse Monoclonal Antibody (IGD26).