



[Go to Product page](#)

Datasheet for ABIN6939745

anti-IGKC antibody

4 Images

Overview

Quantity:	100 µg
Target:	IGKC
Reactivity:	Human
Host:	Mouse
Clonality:	Monoclonal
Conjugate:	This IGKC antibody is un-conjugated
Application:	Immunohistochemistry (IHC), Staining Methods (StM), Flow Cytometry (FACS), Western Blotting (WB)

Product Details

Immunogen:	Recombinant human Ig kappa chain
Clone:	KLC264
Isotype:	IgG1 kappa
Specificity:	<p>This MAb is specific to kappa light chain of immunoglobulin and shows no cross-reaction with lambda light chain or any of the five heavy chains. In mammals, the two light chains in an antibody are always identical, with only one type of light chain, kappa or lambda. The ratio of Kappa to Lambda is 70:30. However, with the occurrence of multiple myeloma or other B-cell malignancies this ratio is disturbed. Antibody to the kappa light chain is reportedly useful in the identification of leukemias, plasmacytomas, and certain non-Hodgkin's lymphomas.</p> <p>Demonstration of clonality in lymphoid infiltrates indicates that the infiltrate is malignant.</p>
Purification:	Purified by Protein A/G

Target Details

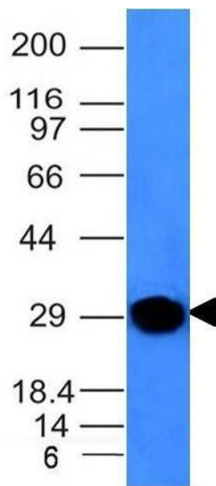
Target:	IGKC
Alternative Name:	IGKC (IGKC Products)
Molecular Weight:	~22.5kDa
Gene ID:	3514
UniProt:	P01601 , P01834

Application Details

Application Notes:	Positive Control: 293T, Raji or hPBL cells. Tonsil or Spleen. Known Application: Western Blot (1-2 µg/mL), Flow Cytometry (1-2 µg/million cells), Immunohistochemistry (Formalin-fixed) (1-2 µg/mL for 30 min at RT)(Staining of formalin-fixed tissues requires boiling tissue sections in 10 mM Citrate Buffer, pH 6.0, for 10-20 min followed by cooling at RT for 20 minutes)Optimal dilution for a specific application should be determined.
Restrictions:	For Research Use only

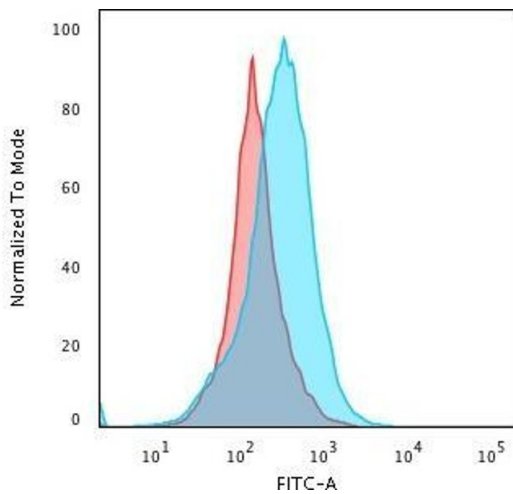
Handling

Concentration:	200 µg/mL
Buffer:	10 mM PBS with 0.05 % BSA & 0.05 % azide.
Preservative:	Sodium azide
Precaution of Use:	This product contains Sodium azide: a POISONOUS AND HAZARDOUS SUBSTANCE which should be handled by trained staff only.
Storage:	4 °C, -80 °C
Storage Comment:	Antibody with azide - store at 2 to 8°C. Antibody without azide - store at -20 to -80°C. Antibody is stable for 24 months. Non-hazardous. No MSDS required.
Expiry Date:	24 months



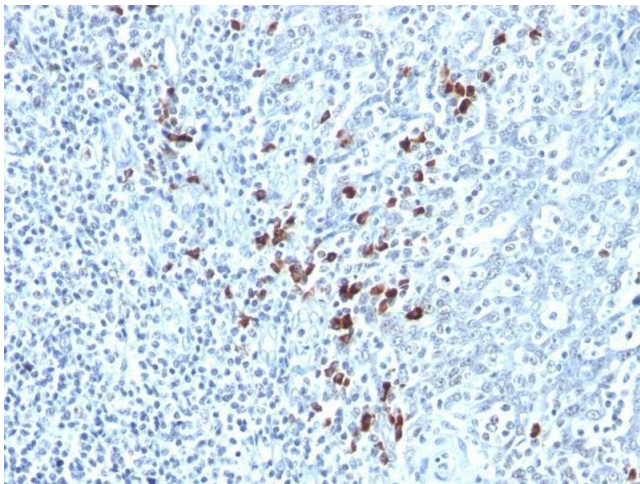
Western Blotting

Image 1. Western Blot Analysis of human Spleen lysate using Kappa Light Chain Mouse Monoclonal Antibody (KLC264).



Flow Cytometry

Image 2. Flow Cytometric Analysis of PFA-fixed Raji cells. Kappa Light Chain Mouse Monoclonal Antibody (KLC264) followed by Goat anti-Mouse IgG-CF488 (Blue); Isotype Control (Red).



Immunohistochemistry

Image 3. Formalin-fixed, paraffin-embedded human Tonsil stained with Kappa Light Chain Mouse Monoclonal Antibody (KLC264).

Please check the [product details page](#) for more images. Overall 4 images are available for ABIN6939745.